

Saving Land for Tomorrow



 **Skagit Land Trust** Annual Report 2003-2004

Directors 2003-04

John Milnor, President
Mount Vernon

John Osborn, Vice-President
Bow

Marlene Moore, Secretary
Anacortes

Jerry Haegele, Treasurer
Anacortes

Jim Bishop, II, Asst. Treasurer
Burlington

Glenn Bordner
Mount Vernon

Catherine Dostart
Mount Vernon

Jeanne Glick
Sedro-Woolley

Robin LaRue
Mount Vernon

Patsy Martin
Alger

Curtis A. Miller
Fir Island

Pat Sneeringer
Mount Vernon

Ray Taipale
LaConner

Keith Wiggers
Burlington

Andrea Xaver
Big Lake

Staff

Molly Doran
Executive Director

Martha Bray
Conservation Director

Brenda Cunningham
Land Specialist

Diane Bednarz
Administrative Assistant

General Counsel

Bradford E. Furlong P.S.

Annual Report

April 1, 2003 - March 31, 2004

Contributors: Martha Bray, Brenda Cunningham, Molly Doran, Jerry Haegele, John Milnor

Managing Editor: Diane Bednarz
Editor: Molly Doran

*Cover Photos by: Phil Green (Western Sandpiper), Diane Bednarz (Maidenhair Fern) and Keith Wiggers (forest)
Illustrations, Brenda Cunningham*

From the President & Executive Director

Dear Members,

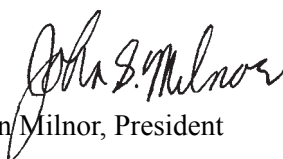
The future of Skagit County is being decided now. To balance the loss of open space and habitat shaping our landscape today, we have taken a creative, nimble, approach to saving the best places while we can. As you will note in our 2003-04 Annual Report, an increasing aspect of our work is collaborating with capable partners. Cooperatively, we are better able to leverage scarce resources to achieve common goals that protect our natural heritage.

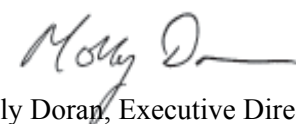
In 2003-2004, we exceeded expectations by protecting 995 acres including over 6 miles of freshwater shoreline. We added substantially to our stewardship reserve fund, knowing that the real challenges in managing the lands we have protected will come down the road. We must leave to the future an ability to steward and defend the natural areas we worked so hard to protect.

We are proud that Skagit County remains a green jewel in an increasingly paved world. How many people live where wild salmon spawn, elk roam the floodplains, heron gather by the thousands to nest, and views of islands, water and mountains surround daily tasks? We are very lucky and we must continue to work hard to pass special places on to future generations.

This work is simply not possible without a strong membership base. This Annual Report is a summary and celebration of the land we, together, are saving for tomorrow.

Thank you!


John Milnor, President


Molly Doran, Executive Director

Mud Lake, protected in 2003

Skagit Land Trust
PO Box 1017
325 Pine Street, Suite B
Mount Vernon, WA 98273
(360)-428-7878
email: trustmv@fidalgo.net
website: www.skagitlandtrust.org



Conservation Highlights

April 1, 2003 - March 31, 2004

In 2003-04 the Trust protected 2.5 more miles of Middle Skagit River shoreline bringing our total protection of this stretch of waterways to over 10 miles. With help from the Salmon Recovery Funding Board and the Skagit Watershed Council, two more important properties were added to the Trust's ownership in the Day Creek area and a grant for Minkler Lake was secured.

May saw the final transfer of 593 acres of floodplain and four sites of Skagit River shoreline and vital habitat into public lands when the Trust sold Skiyou Island to the US Forest Service for inclusion as Wild and Scenic Rivers lands.

In May the Trust placed a Conservation Easement with the Farmland Legacy Program on a 139-acre property along I-5 north of Burlington and sold the land to organic farmer, Douwe Dykstra. This made the property affordable as farmland while also protecting it as waterfowl habitat and open space.



Executive Director Molly Doran and Board Member John Osborn on a Samish Island Conservation Easement.

In June the Trust purchased 29 additional acres of Mud Lake bringing our total Mud Lake Conservation Area to 48 acres. This lake connects to the Nookachamps floodplain and is critical habitat plus allows for natural flood ecosystem processes of the Skagit River.

75 acres of Conservation Easements were added to the Anacortes Community Forest Lands. This co-operative project with the City of Anacortes and local citizens through Friends of the Forest will eventually protect 1500 acres of urban forest and lakes within city limits.

Private Conservation Easement donors are conservation champions. By protecting their property for perpetuity they ensure important landscapes remain as a legacy for future generations. This year we had easements donated by Bob Keller and Pat Karlberg on the Cascade River, John and Kristen Boyes in Clear Lake, and Cliff Squires on Samish Island.



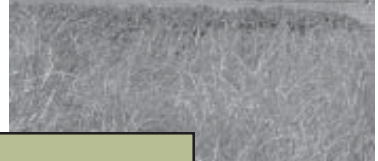
48 acres of Mud Lake is now protected by Skagit Land Trust.



Cascade River - Keller - Karlberg Conservation Easement

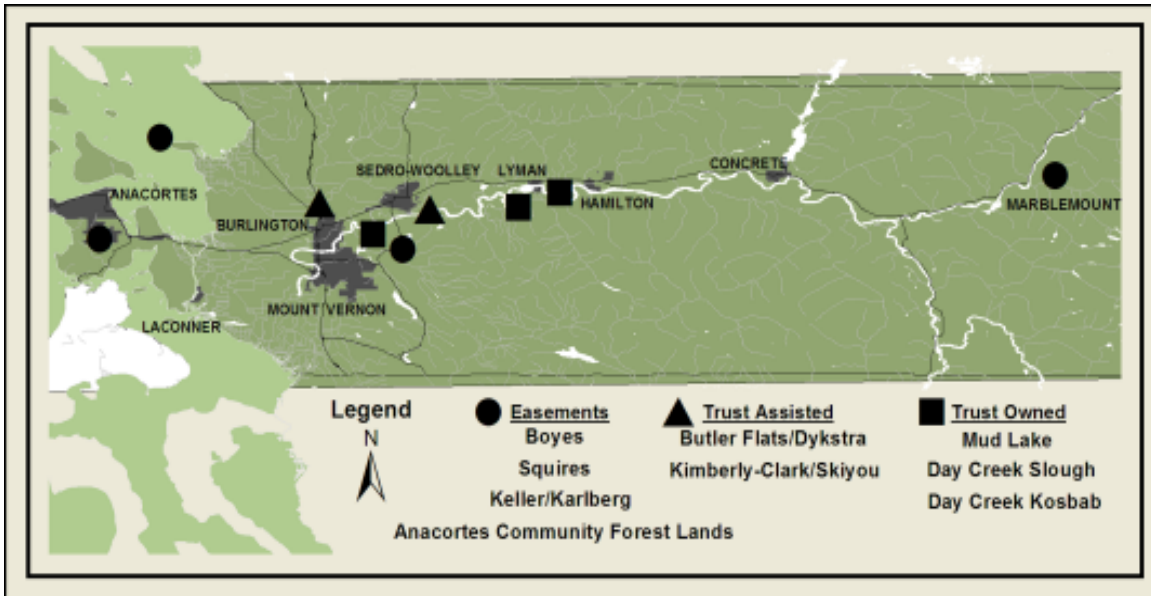


One of five Samish Island Conservation Easement



Day Creek

Lands Protected 2003-2004



Mud Lake



Keith Wiggers & Ralph Heft working the land



Boyes Conservation Easement - Clear Lake

Protected Lands 2003-2004



The gravel bars at Day Creek Slough, purchased in August 2003, provide ideal salmon spawning.



Day Creek - staff and volunteers checking on the growth of trees planted in a riparian area.

"I know of no movement...as convincing, as effective, and as compassionate as the land trust movement in this country. It is like water, seeping into the most unexpected places, rising and falling and filling the basin of the human heart."

Renowned writer and naturalist, Terry Tempest Williams

Investing in land conservation cultivates hope

At the Trust we tend to be pretty practical – We count acres of land protected. We use measurable criteria to select the best projects. We ask hard questions. This discipline has paid many dividends – in the form of an impressive rate of land protection, and examples of exceptional collaboration within a diverse community.

There is more, however, to land conservation than technical expertise. As the Trust grows, so do our roots in the community. We hear the stories of the early settlers who stored logs on Minkler Lake, we watch farmer friends struggling to stay afloat, and we envision a future where this jewel that is Skagit County is vibrantly alive....

Saving land links us to the past and gives us hope for the future – acres protected say *"Salmon Recovery"*, *"Preserved Forever"*, *"A Natural Legacy"*. This is the antidote for seemingly endless sprawl. Saving land for the future promises open space and native plants and animals and wild places – it cultivates hope.

And so, we are trying to think big – in the next five years we look to some of the remaining largest tracts of undeveloped lands in the county, where growth presses hardest and threatens special places – the Chuckanut Foothills, the Nookachamps basin and Devils Mountain. We'll use the tools we know well, and look for new ones. And we'll make new friends and learn new stories that link us back to the land.



Mud Lake - protected for waterfowl and fish

Highlights in Stewardship

March's Point Heronry

Members from Skagit Land Trust, Evergreen Islands, Skagit Audubon, Friends of Skagit County, the Port of Anacortes, and T Bailey counted 575 active nests at March's Point in December. This heronry is the largest known Great Blue Heron nesting site in Western North America. A mitigation and monitoring agreement with T Bailey, with the purpose to alleviate potential disruption to the nesting herons, took effect in 2004. Biologists from Skagit Land Trust and Grette Associates state that the agreement conditions appear to be working for current T Bailey activities.

CREP

Just what are those blue tubes everywhere?? They are "protectors" for newly planted native trees. The plantings are part of the the Conservation Reserve Enhancement Program or CREP (pronounced krep). This is a joint, state-federal land conservation program that assists qualified landowners in addressing particular environmental issues, such as restoration of stream buffers. Despite two very dry summers, Skagit Land Trust's CREP buffers on our Hurn Field and Tope Ryan properties are thriving thanks to help from Skagit Conservation District.

Butler Flats Restoration

This past year the Natural Resources Conservation Service (NRCS) began to enhance the duck habitat found on Skagit Land Trust's Butler Flats property. The NRCS constructed many shallow ponds in the wetland, providing year-round open water for ducks, amphibians and other wildlife. Skagit Land Trust volunteers assisted by planting hundreds of willows, cottonwoods and Sitka spruce trees on the edges of these ponds, increasing the cover for songbirds and providing shade for the water.

Stewardship Reserve Fund

When we say we will protect land in perpetuity, we mean it.

In 2004, Skagit Land Trust updated and augmented its Stewardship Reserve Fund to reflect the growing responsibilities of the Trust. When the Trust sold the Kimberly-Clark Properties to the US Forest Service and others, we put \$136,000 of the net proceeds from this sale into the Stewardship Reserve Fund. This added to the \$90,220 already in this fund, donated by Conservation Easement donors and other concerned members. This fund generates interest that will help pay for the stewardship and legal defense of both conservation easements and Trust-owned lands in the future. The board-directed portion is a revolving fund that can be borrowed for time-sensitive protection opportunities. You may make a contribution to the Stewardship Reserve Fund at any time to help ensure that the lands we are working so hard to protect today, have funds that keep them protected in the future.

Thank You

Skagit Land Trust is extremely grateful to the dedicated group of hard-working volunteers that help the Trust.



Butler Flats provides shelter and nesting areas to numerous bird species. The ponds are a welcome stop over for migrating shorebirds and wintering ducks.



Partnerships



In the Middle Skagit

Our success in the Middle Skagit is built on the shoulders of landowners and our partners such as the Skagit Watershed Council and the Salmon Recovery Funding Board (SRFB –pronounced Surfboard). The Skagit is a key watershed in the state for salmon recovery. It is the largest watershed in Puget Sound with significant natural habitat. It is the only river in Washington that supports all five native salmon species. The Skagit Watershed Council, under the direction of Shirley Solomon, brings together 40 partner organizations to work on the well-being of salmon and their habitat in the Skagit and Samish watersheds. The strong leadership of the Watershed Council and high level of partnership work assures that these watersheds receive significant state and federal funding to protect and restore important salmon habitat. A majority of that funding currently comes from the Salmon Recovery Funding Board. Skagit Land Trust has been awarded six SRFB grants. Our SRFB project manager, Mark Dubowski, has been instrumental in helping us work through many complex issues in creative and positive ways to achieve critical and timely protection of salmon habitat. Marc was awarded Conservation Partner of the Year at the Trust's 2004 Annual meeting.



A wide gravel bar at the mouth of Day Creek is spawning habitat for King & Silver Salmon.

On Samish Island

In March, Skagit Land Trust and Cliff Squires expanded a Conservation Easement on Samish Island donated by his father, Jim Squires. This addition brings the total area protected on Samish Island under five Trust Conservation Easements to 40 acres including nearly 1/2 mile of shoreline. Skagit Land Trust is honored to have a strong history of building effective partnerships with private landowners on Samish Island, a place known for its rare flora, exceptional bird habitat and rich marine environment. The Squires, Schayes, Corkerys, Goldstons and Grandy Lake Forest have generously decided to contribute to citizens past, present and future by protecting their lands for perpetuity. We are so grateful.



Board member John Osborn, on Samish Island, is an active member of the Stewardship Committee

Partners

2003-2004

City of Anacortes, Ducks Unlimited, Farm Service Agency, Friends of the Anacortes Community Forest Lands, Natural Resources Conservation Service, The Nature Conservancy, Salmon Fisheries Enhancement Group, Salmon Recovery Funding Board, Skagit Conservation District, Skagit County Farmland Legacy Program, Skagit River System Cooperative, Skagit Watershed Council, US Forest Service, Seattle City Light, Whatcom Land Trust.

Financial Statements 2003-2004

Comparative Financial Statements FOR THE YEARS ENDING MARCH 31, 2004 AND MARCH 31, 2003

Statement of Financial Position



	2004	2003
Current Assets		
Cash and short-term investments	\$681,625	\$281,389
Investments	26,987	25,955
Prepaid expenses	1,550	
Earnest money on deposit	228,430	
Accounts and note receivable	61,211	45,246
Rental deposit	2,499	9,400
Total Current Assets	1,002,204	\$361,990
Long Term Assets (net)		
Land	1,600,277	2,251,048
Equipment (net)	13,348	13,390
Total Long Term Assets	1,613,625	2,264,438
Total Assets	2,615,829	2,626,428
Liabilities		
Current liabilities	765	15,383
Mortgage payable	-	800,000
Accrued interest/taxes payable	6,675	19,233
Unearned revenue	197,300	-
Total Liabilities	204,740	834,616
Net Assets		
Unrestricted	2,188,418	1,666,001
Temporarily restricted	222,671	125,811
Total Net Assets	2,411,089	1,791,812
Total Liabilities and Net Assets	\$2,615,829	\$2,626,428

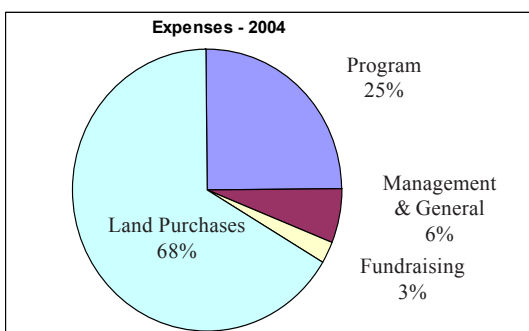
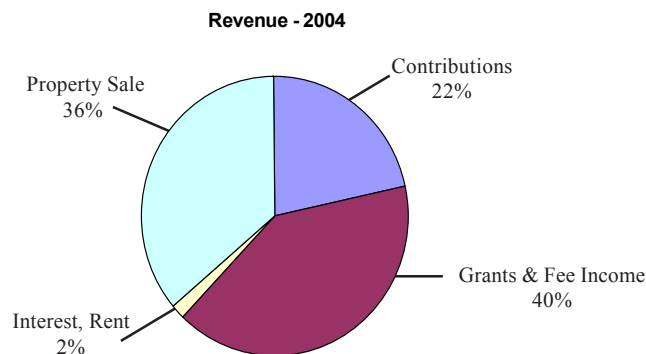
This abbreviated financial statement is based on the form recommended by the Financial Accounting Standards Board for Financial Statements for Not-for-Profit Organizations. This statement is a summary of the Report submitted to your Board of Directors. Hoekstra & Hoekstra, Certified Public Accountants, who found them to "present fairly, in all material respects, the financial position of Skagit Land Trust as of March 31, 2004", audited the 2004 statement. The March 31, 2004 financial statement and independent auditor's report are on file in the offices of Skagit Land Trust. Also available for review is the IRS 990 tax return for this year.

At year-end March 2004 the Trust held 39 Conservation Easements and owned 19 parcels in fee. Total area under Trust stewardship was 3,287 acres throughout Skagit County. Trust membership totaled 475.

Statement of Activities and Changes in Net Assets

	Unrestricted	Temporarily Restricted	Total 2004	Total 2003
Support and Revenue				
Contributions (cash and in-kind)	\$93,513	\$104,000	\$197,513	\$224,602
Grant and fee income	364,413		364,413	364,123
Rental Income	4,533		4,533	7,000
Investment Income	10,154		10,154	11,887
Net gain on land sales	330,857		330,857	-
Assets released from restrictions	57,140	(57,140)	-	-
Reclassifications	(50,000)	50,000	-	-
Total Support and Revenue	810,610	96,860	907,470	607,612
Expenses				
Program Services	213,999		213,999	251,404
Management and general	52,513		52,513	72,775
Fundraising	21,681		21,681	13,866
Total Expenses	288,193	-	288,193	338,045
Increase in Net Assets	\$522,417	\$96,860	\$619,277	\$269,567
Net assets, beginning of year			\$1,791,812	\$1,522,245
Net assets, end of year			\$2,411,089	\$1,791,812

Revenue 2003-2004



Financial Notes

Skagit Land Trust completed several major land transactions this year.

- The Trust sold 593 acres of Skiyou Island to the US Forest Service for \$960,000.
- The Trust sold 139 acres at Butler Flats to a private buyer with a simultaneous sale of a Conservation Easement to the Farmland Legacy Program for a total of \$381,834.
- The Trust bought 29 acres of Mud Lake for \$34,000.
- The Trust bought 21 acres at Day Creek for \$34,000 with grant funding of \$28,900 from the Salmon Recovery Funding Board and Trust funds of \$5,100.
- The Trust bought 110 acres at Kosbab Slough (Day Creek) for \$273,000 with grant funding of \$232,050 from the Salmon Recovery Funding Board and Trust funds of \$40,950.
- The Trust placed \$228,430 in escrow for the purchase of Minkler Lake, completed in April 2004. The Salmon Recovery Funding Board contributed grant funding of \$197,300.
- The Trust repaid a note of \$800,000 to The Nature Conservancy and The Nature Conservancy forgave \$13,150 in interest payable.
- The Trust received a cash donation of \$100,000 from Robert V. Brown and Patricia Hegg Brown to be utilized for future land purchases.



Members & Partners

April 1, 2003 - March 31, 2004

Thank You

We are grateful to the individuals, companies and foundations listed below whose donations were received between April 1, 2003 and March 31, 2004.

Corporate Members

Business Conservator (\$1000-\$2499)

Printwise Inc
Skagit Valley Food Co-op

Business Benefactor (\$500-\$999)

Timmers Appraisal Services

Business Patron (\$250-\$499)

First American Title
Leonard, Boudinot & Skodje, Inc.
MacGregor Publishing Co.
Miller Consulting
Skagit State Bank

Business Sponsor (\$100-\$249)

Cap Sante Heated Mini-Storage
Dunton's Auto Body Shop
Farm to Market Bakery
Hoekstra & Hoekstra
Lee Mann Photography
Puget Sound Energy
Shorebird Properties
Skagit River Steel & Recycling, Inc.
Skagit Valley Healing Arts
Soto McNett Construction, Inc.

Business Supporters (\$50-\$99)

Earthbound Used Books
Landed Gentry Realty
McGregor Insurance Agency, Inc.
Meyer Sign & Advertising Co.

Organizations

Evergreen Islands
Skagit Audubon Society
Skagit Conservation District
Skagitians to Preserve Farmland
The Nature Conservancy
Friends of the Anacortes Community Forest Lands

*continued on
page 10*

Skagit Land Trust Members

April 1, 2003 - March 31, 2004

Matching Gifts

Microsoft Giving Campaign
Safeco

Granting Organizations &

Foundations

The Dudley Foundation
Horizons Foundation
The Hugh & Jane Ferguson
Foundation
The Seattle Foundation
Salmon Recovery funding board

Stewardship Fund

Patricia Karlberg & Robert Keller
John & Kristen Boyes
Ralph & Ruth Heft

Trust Builders

Major Donors (\$5,000 & Up)

Robert Brown &
Patricia Hegg Brown

Conservator (\$1,000-\$2,499)

Anonymous
Anonymous
Nadine Burrington
Harold & Shirley Christenson
Ann & Bob Dursch
Dr. Jay Ham
John & Linda Hunt
Marcia Hunt
Beau MacGregor
James & Marlene Moore
Nielsen Family
Mark A Nysether
MaryKay Pasnick
Tamara Stevens & Todd Rubano
Michael Temcov
Keith and Jan Wiggers
Rich & Beth Williamson

Sustaining Members

Benefactors (\$500-\$999)

Joanne Abelson & Chris Goelz
Lloyd & Wendy Brown
Jane Clapp
Elsa Gruber & Charles Prueett
Jerald & Sheila Haegele
Rae Kozloff
Janice Martin & Doug Robinson
Sue & George Mehler
Gene & Ginny Murphy
Erynn E.M. Stephan
Richard & Sharon Stewart
Ben Winkes
Ken & Anne Winkes
Andrea Xaver

Patrons (\$250-\$499)

Ruth & Harry Adamitz
Robert L. Apter, MD
Mary Kay Barbieri & Linda Jordon
Diane Bednarz & Peter Jepson
C. A. Biermann
Glenn & Theda Bordner
John & June Brada
Martha Bray & John Day
Bob Carey & Kari Odden

Molly Doran & Andy Cline
Catherine & Tom Dostart
Nick Fahey & Deborah Martin
Phil & Kathy Green
Larry & Josie Hedgpeth
Robert & Cecilia Johnson
Patricia Karlberg & Robert Keller
Sean Kelly
Robin LaRue
Gunnard Modin
Kenneth & Enid Oates
Tom Robbins
Bob & Barb Rock
Kathleen H. Root
David T. & Eddylee M. Scott
Marlies & John Slostad
Pat Sneeringer
Linda Speck & Ken Willis
Kate Stewart & Deborah DeWolfe
Tim & Alice Volwiler

Sponsor (\$100-\$249)

Astrid Aamot
Bud & Jackie Anderson
Thais and Howard Armstrong
Bruce & Joanne Ault
Bob & Pat Bell
Jim Bishop II
Sarah Bishop & John Milhiot
Robert & Victoria Bourns
Don & Arlene Brown
Elizabeth Brown & Ethan Goldberg
Ferdie Businger
David & Nancy Carabba
John A. Carr, MD
Tom, Beth & Christine Cleland
Debbie & Darrell Cornelius
Patricia A. Cowgill
Lyle & Barbara Craner
Joan Cross
Brenda Cunningham & Tim Manns
Larry & Lorry D'Arienzo
Gene & Marilyn Derig
Bill & Holly Dietrich
James Eberhardt
Harold & Diane Eiesland
Walter Enquist
Ronald Feld & Lorna Klemanski
Von & Elizabeth Kuehn
Donald J. Finsen
Joseph & Lucrezia Fuchs
Brad Furlong & Eileen Butler
James Gallup
Carolyn & Ed Gastellum
Herb & Theresa Goldston
Pat & Janet Good
Daniel Hanesworth
Albert Heath
Ralph & Ruth Heft
Robert Higgins, MD
Mark & Alison Hitchcock
Doris Holmes
Bill & Ruth Hood
Norris & Mary Hooton
Sarah Huntington
Jean & Brad Imus
Clayton & Barbara James
Stephen & Nancy Johnson
Kraig & Kathy Kemper
Robert & Carol Knowles
Dick & Doris Kohler

Fayette Krause
Mr. & Mrs. Gordon Lisser
Robert & Norma Maris
Rusty Kuntze & Libby Mills
Trevor & Carol Kyle
Robin LaRue
Shawna Laursen & Dan
Rasmussen
George Lawson
Patricia Manier
Patricia Botsford-Martin &
Daniel Martin
William & Diana McGaw
Malcolm & Michelle McPhee
Robert & Barbara Meier
Anne Brooks Middleton &
Jack Middleton
Gary & Betty Miles
Curtis Miller & Shirley Solomon
John Milnor
Tom & Mary Moody
Dick & Joyce Nelson
George & Mary Newbury
Nicholas Nigro
John & Shirley Osborn
Kathleen Walsh Packard
Robert G. Personius
Fred Poppe
Wallace & Barbara Post
Ed & Linda Pysker
Denny & Laurie Quirk
Richard & Karen Raisler
Carl & Jane Randolph
Richard & Nancy Robblee
Gerry & Doris Robbins
Herb & Christine Sargo
Jim & Levy Scheltens
Brian Scheuch & Corinne Hajek
Maurice & Virginia Shank
Terence & Lois Slotemaker
Harriet Spanel
Charles Stavign
Jane E. Stephens
Terry & Kathy Stevens
Carolyn Sutton & Cort Liddell
Dennis & Mary Ann Taylor
Mary & Bob Taylor
Bill & Sally Turner
John & Doris Tursi
Jane Wagner & Bruce Bollert
Barbara Weaver
James Wells
Jerry & Carol Whiffield
Don Wick
Todd Wood & Judy Gamble
Annette Woolsey & Jim Shiflett
Ms. G. O. Wright
Robert & Kay Wuert
Margaret Yeoman
Jane Zillig & Paul Ingalls
Stan Zyskowski

Contributing Members

Supporter (\$50-\$99)

David Adams & Greta Movassaghi
J. Allen & Marie Smith
Dick Anderson
Nancy Ashenfelter
Mark & Ruth Backlund
Lynette Trucco-Baier & Doug Baier
Judy Baker

Liz & Michael Bart
Rick & Laura Bethke
Paul Blum & Alison Zak
John & Gail Boggs
Bob & Nina Boudinot
Jon & Ann Bowman
Dan & Donna Brauer
Karen & Jonathan Briggs
James & Neta Cahill
Cathy Carmody & David Deffenbaugh
Joan Casey
Jennifer F. Clarke, Ph.D
Landry & Susan Corkery
Ivar Dolph & Phyllis Dolph
Dianne Dailey & Robert Doupe
Patricia & Richard de La Chapelle
Woody Deryckx
Joyce Dillard
Barb & Terry Doran
Adrienne Edmonson &
Michael Knodt
Phyllis L. Ennes
Wayne Everton
Doug & Cheryl Everhart
Bill & Marsha Folmer
Jim & Frances Ford
Karla Garey
Kristine & Roger Goodan
Ernie & Joan Handelmann
Carol Havens & Vince Streano
Lief & Monica Hazelet
Helen Heneks
Ri & Sally Hill
Joshua & Amber Hunter
Hal & Claris Hyatt
Tim Hyatt & Nicolette Harrington
Susan Jepson
Elmer & Jean Johansen
James L. Johnson
Kirk Johnson & Lori Nordgulen
Steve & Robyn Johnson
James Kaufman
Beth Kraig & Suzanne Klinger
Jere LaFollette & Wende Sanderson
Eric & Laura Kraig
Kathy & Mark Larson
Lance & Nancy Larson
Miles Learned
Beau & Linda Loughlin
Meredith & Rick Machin
Michael & Suellen Mancer
Ivy & Richard Merrill
Anita Meyer & Josh Greenberg
Susan & Fred F. Miller
W.M. Mohundro
Deborah Money
Edward K. Newbold
David & Sydney Olausen
Mike & Bonnie Olpin
Peggy Ratermann
Peter Remick
Lauren Rich
Harold & Irene Richardson
Susan Richardson
Cyd & Herb Sanborn
Jonathan & Scottie Schneider
Donna Schram, Ph.D
Robert E. Scott
Don & Margaret Semrau
Dan Senour
Sue & Richard Sigmen
Richard Staples
Sherri Stites

Thank You For Your Support

Richard & Daphne Storwick
Glen & Vicki Strandberg
Ann Tanner
Gary & Ruby Vallat
Bill & Laurie Wallace
Virginia Walsh
Sarah Welch & Jon Riedel
Barbara Wells
June Wheeler
Robert & Polly Winkelman
Mary Wohleb
Robert C. Woolley
Jennifer & William Woyski

Family (\$35-\$49)

Otto Allison
Jim & Joyce Anderson
Steve & Gail Aslanian
Scott & Jennifer Aylor
Gary Bailey & Gayle Scholl
Meredith Baker
Graydon & Joyce Baker
Cathy Baker & Rich Feldman
Rich & Feryll Blanc
Linda Ballantine & Roland Matthews
John & Nancy Barnard
Tom & Helen Bassler
Al & Sue Berger
Dr. Bruce Berkowsky
Ron & Teri Bernstein
Gary & Heidi Bletsch
Ric & Janet Boge
Rone & Marcella Brewer
Dr Gary & Sue Brown
John & Mary Louise Brown
Julie Burgmeier &
Jonathan Duckworth
Kelly Bush & Russ Dalton
Dan & Sally Casey
Bill & Frankie Chapman
Howard & Ruth Christofersen
Gerry Cook & Hannah Sullivan
Chris Danilson & Jenny Baker
Jack & Sonjia de Yonge
John & Ramona Douglass
Judith Dudley & Thomas Slocum
Gene & Mayo Earnest
Jerry & Marilyn Eisner
John & Marie Erbstoesz
Christie Fairchild & Art Olson
Alix Foster & Rick Shorten
Tom & Kay Glade
Barbara & Dean Gregory
Peter C. & Dorothy Haase
Ramona Hammerly
Kathryn Heron
David, Diane, & Emily Hertberg
Gina Van Hess
Vernon and Marolyn Hilbert
Steve & Katie Hinton
David & Kathy Hirdler
Bill & Gail Hlavacek
Will Honea & Marketa Vorel
Steve & Andrea Hood
Elliott & Vickie Johnson
Vic & Marlene Jones
Amy & Pierre LaBarge
Nan Laney & Ned Currence
Karen A. Lewis-Hart
Candace L. Lower
Mr. & Mrs. William V. Lucic
Dr. Malcolm Madenwald &
Wendy Gray

Donald & Mary Magness
Keith & Joan McGee
Todd McNett & Liz McNett-Crowl
Dick & Bettie McNeely
Duane & Joan Melcher
Judy & Gordi Middleton
Matt & Kim Miller
Steve & Betty Miller
Michael Monroe
David C Moreland
Gordon & Joanne Odegaard
Hazel Pilkinton
Andrea & Lyle Poolman
Anita Pyne
Clarence & Virginia Rankin
Robert & Maureen Ratfield
Ashley Rawhouser
Robert Raymond & Dorothy Downes
Kathy & Robert Reim
Kim Sager
Teresa L. & Scott A. Rinkler
Andrew C Ross & Laura Cailloux
Paul Schissler & Sue Willis
Jo-an & Bill Scott
John & Julie Semrau
David & Grace Smith
Gail R. Smith
Jay Smith & Susan Wood
John Smith & Cheryl Harrison
Molly & Ari Smith
Carl & Marlene Stubbs
Richard Staples
Mary Augusta Stapp
Larry P. & Alba D. Stevens
Ken & Liz Stewart
Margaret Studer
Steve & Frederica Sulzbacher
Linda & Stephen Summers
Nancy Swalling
Diane Szukovathy & Dennis Westphall
Mary & Bob Taylor
Arn & Fran Thoreen
Richard Tjersland
Richard & Carol Treston
Dedy Ward & Susan Parke
Patty Wasson & Bob Shelly
Natalie & Steve Weatherby
Mr. John A. Wells
Jim & Betty Wright
Philip & Carolynne Wright
David & Pat Young

Individual (\$25-\$34)

Evelyn Adams
Kathryn Alexandra
Helen Andersen
Arthur & Maryann Arndt
Charles Ayers
Ms. Barbara Bashaw
Richard Bergner
Hazel Blakeslee
Clayton Bliss
Ellen Bynum
Leslie M Campbell
John & Merydee Carlson
Carol Carnahan
Dorris Civille
Sonia Collins
Barbara Cooper
Allen Craney
Michael Daley
Andrea Glennon-Daniels &
David Daniels

Julie de Rouché
Barbara French
Mary Froderberg
Ms. Dianne Gaughan
Barbara Geraghty
Dee Gibson
Frank Graham
Anthony G. Hamerski
Louise Harris
Dyvon Havens
Albert Heath
Anne Hillard
Lillian Hoekstra
Marji Hoff
Clara Hogg
Janette Johnson
Paul Johnson
Roger Kelley & Darlene Mindrum
Rafeal Kelly
Konrad Kurp
Bojan Kuure
Lori Kyle
Jeannie Lennon
Karen Mac Donald
Ann Magnano
Father Paul Magnano
Dan Mahar
Michael Maki
Jeff & Ann May
Dr. Jennifer McCoy
Mr. & Mrs. Philip McCracken
Cynthia McGuinness
Janet McKinney
Tarn Mower
Grace Novicky
Allane Onkst
Helen M. Ovenell
Lorna Parent
Mark Pearson
Loretta Penrod
Jim Roberts
Bob Rose
Mary Rose
Andrew C Ross
Marilyn Ross & Robert Schwartzberg
Mike Sato
Janet Saunders
Mary Schacht
Margaret M. Schulz
Edward & Carol Schwabe
Robert & Joan Skeelee
Laura Smith
Liz Smith
Patrick Smith
Shirley Smith
William F. Stanley
Rosemary Stevens
Carol Strandberg
Patricia Verd
Anne Wells
Rosann Wuebbels & George Reeves
Patricia Youngman

Associates

Ms. Jacqueline Bohn
Thomas & Elaine Dinan
Rose Friedlander
J.N & L.B Furin
Kelly & Brooks Middleton
Ruth Elfstrom Riggles
Steve & Susan Rigney
Anne Schwartz & Mike Brondi
Gale Sterrett
Chester Wood

In Honor of

Lois Engelbright Memorial

Margaret R. Finlayson-Bear
Richard & Thelma Berner
Jay Castle & Susan Castle
Alvin & Laurel Clairmont
Harold & Martha Clure
Linda & Nathan Cook
Leo J. & Katherine W. Curro
Michael Daley
Eunice W. Darvill
Marcia Van Doren
Mr. & Mrs Calvin W. Dunnell
Mr. & Mrs. Robert Felsher
Jim & Frances Ford
Bernice Fox
Louise Harris
Kathy & David Hirdler
Jimmie N. & Jane Hoffman
Sue & George Mehler
Betty Ann Morgan
Gene & Ginny Murphy
Dorothy Naas
Bill & Joyce Olson
Lauretta Scionti
Anna Sebring
Shirley Smith
Dr. Ann Spradlin
Tamara Stevens & Todd Rubano
Alfred & Laurie Strasser
Ned & Jeane Swanson
Cecil & June Thomas
Pamela & Curtis Vail
Marcia Van Doren
Keith & Jan Wiggers
Annette Woolsey & Jim Shiflett

Swalling Memorial

Brenda Cunningham & Tim Manns

In-Kind

All American Master Locksmith
Thais Armstrong
Diane Bednarz
Glenn Bordner
Joseph D. Bowen
Burke Museum
Concrete Nor'West
Crown Pacific
Molly Doran and Andy Cline
Catherine & Tom Dostart
Jerry Eisner
Regan Gust
Linda and John Hunt
Peter Jepson
Eugene Kozloff
Trevor Kyle
Anne Middleton
Marlene & James Moore
Frank Murdzia
Museum of Northwest Art
NOLS
John Osborn
People for Puget Sound
Printwise
Salon 29
Skagit River River Steel & Recycling
Sky Nursery
Pat Sneeringer
Keith Wiggers
Andrea Xaver



PO Box 1017
325 Pine Street, Suite B
Mount Vernon, WA 98273
www.skagitlandtrust.org

Non-Profit Org.
U.S. Postage Paid
Mount Vernon, WA
Permit No. 195

Saving Land for Tomorrow



Mission Statement

Skagit Land Trust protects wildlife habitat, wetlands, agriculture and forest lands, scenic open space and shorelines throughout the mainland and islands of Skagit County for the benefit of our community and as a legacy for future generations.