

# Annual Membership Meeting

Year in Review for April 1<sup>st</sup> 2022 through March 30<sup>th</sup> 2023





# SKAGIT LAND TRUST

*Saving Land for Tomorrow*



- 
- Sound Finances
  - Ethical Conduct
  - Responsible Governance
  - Lasting Stewardship
-

# Welcome!

Thank you for joining us!

Please note:

- Tonight's presentation is being recorded
- Please keep your video off until the end
- All guests are on mute for the presentation
- Live Transcript has been enabled



Thank You members and  
partners

YOU MAKE IT POSSIBLE

# Tonight's Agenda

- Board Elections
- Pass Bylaw Updates
- Blue Heron Award
- Department Awards
- Year in Review with Executive Director
- A Birds Eye View: Observations from the March Point Heronry
- Questions and Social Time



# Board Member Elections

## Reelecting for three-year terms

### Karen Krub

Resides outside of La Conner. Works with local Agriculture. B.S. in Resource Development from Michigan State. J.D. from Yale Law School. Joined Board in 2008. Land Committee Chair



### Roger Fuller

Coordinates natural resource management at Padilla Bay National Reserve. Adjunct Faculty at Western WA. Member of Skagit Climate Science Consortium. Joined the board in 2017. Stewardship Committee member.



### Hal Lee

Lives in Mt Vernon. Career in instrumentation design and field service for mechanical engineering and the U of WA Dept of Oceanography. Joined Board in 2013. Trust land steward since 2008 and serves on stewardship, facilities, land, and investment committees.



### Mark Linnemann

Owner & proprietor of the Guemes Island Resort and the Guemes Island General Store. Photographer, educator, ecotourism focus. Joined board in 2011. Land Committee member.



# Board Member Elections

## Reelecting for three-year terms

### Therese Ogle

Lives in Anacortes and Samish Island. Career as a philanthropy advisor for family foundations and charitable trusts. Has served on many local and state-wide org boards. Joined board in 2020. Development and Outreach Chair



### Warren Walz

Warren is a CPA with 50 years experience and retired recently from being a member/owner of Williams & Nulle, PLLC. Member of the Anacortes Yacht Club, Anacortes Rotary Club. Land Committee. Joined board in 2014.



### Anne Winkes

Live in Conway. Retired pediatric nurse practitioner. Degrees from U of WA, Skagit Valley College, Stanford. Anne's interest in Skagit Land Trust grew from her love of Skagit County's natural areas. Joined Board in 2014. Public Policy Chair



## Up for Election to a Three-Year Term

### Lynne Wenberg-Davidson

Retired Senior Program Manager with Boeing. MBA from U of WA. Focuses now on environmental advocacy and volunteers with local environmental organizations. Advisory Committee for the Salish Sea Stewards. Member and current Vice Chair of Skagit Marine Resources Committee. Leads several SMRC projects, such as the Bowman Bay Beach Restoration and the Skagit Bull Kelp Kayak surveys.



An aerial photograph of a lush, green landscape. In the foreground, a dense forest of evergreen trees covers a hillside. A large, dark blue lake or reservoir is visible on the right side, curving around a peninsula. In the middle ground, there are several small settlements or farmsteads with buildings and cleared fields. A prominent, rocky hill with sparse vegetation and a few utility towers sits in the background. The sky is clear and blue, with distant mountain ranges visible on the horizon.

The lands conserved and protected by Skagit Land Trust have been inhabited and stewarded by numerous tribes and Indigenous peoples since time immemorial.

We recognize and respect the inherent, indigenous, and treaty rights of the Coast Salish People, who have a deep and abiding connection to this place.



*Tribes within Skagit County include Samish Indian Nation, Sauk-Suiattle Indian Tribe, Swinomish Indian Tribal Community, and Upper Skagit Indian Tribe.*

*In addition, the Lummi Nation, Nooksack Tribe, Stillaguamish Tribe of Indians, and The Tulalip Tribes have ancestral and continued connections to these lands.*

*We pay respect to the elders, tribal leaders, and members of each sovereign nation who continue to honor these lands through traditions that have been passed down through the generations.*

# Mission

Skagit Land Trust conserves wildlife habitat, wetlands, agricultural and forest lands, scenic open space and shorelines for the benefit of our community and as a legacy for future generations.

*Saving Land  
for Tomorrow*



# We Believe In

Sound Ecosystems

Sustainable Stewardship

Engaged Volunteers

Involved & Informed Community

Effective Collaboration

Integrity

It wasn't good enough to save a few acres here and there as parks – we wanted to protect the vistas, the rivers, wetlands, the working farms and forests, the shorelines – in short, the land and the fabric of life it knit together."

*- Keith Wiggers, Founder*



# Year In Review: What You Helped Us Accomplish From April 2022 – March 2023



# Cascade Forest Near Marblemount

Purchased 80 acres in October 2022  
A working forest located near the  
Cascade and Skagit River confluence  
Protection benefits forest and salmon  
habitat and water quality

# Shuksan Greenschist Rock Ecosystem Protected



# Bequest: Gary & Betty Miles



Twenty-four years ago, Gary & Betty first met with us to discuss leaving their land to wildlife.

Their 10-acre property on Samish Island came to the Trust in 2022.





Hérons, bald eagles, raptors and owls are often seen on the property's large trees or at the pond along with numerous other wildlife – just as Gary and Betty hoped



# Casperson Conservation Easement



Anne protected her property on Casperson Point, Guemes Island, with a conservation easement (CE).

A CE allows landowners to protect important parts of their property while still living on the land.

# Casperson Conservation Easement



Protects a mature coastal forest

Includes 350+ feet of rocky shoreline & a pocket beach

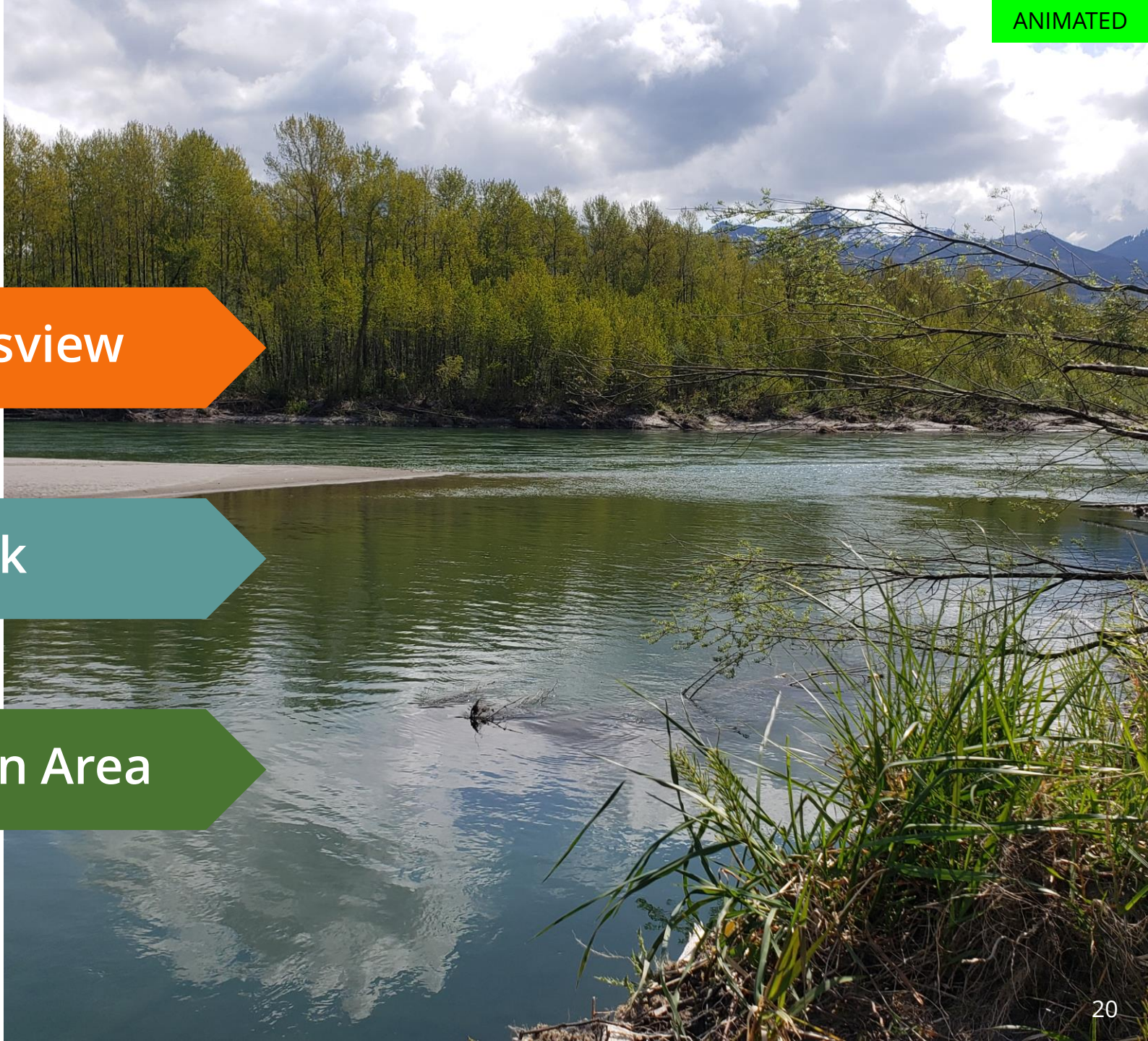
Protects a prominent view of the point for marine travelers & Saddlebag State Park

# Building on Conservation

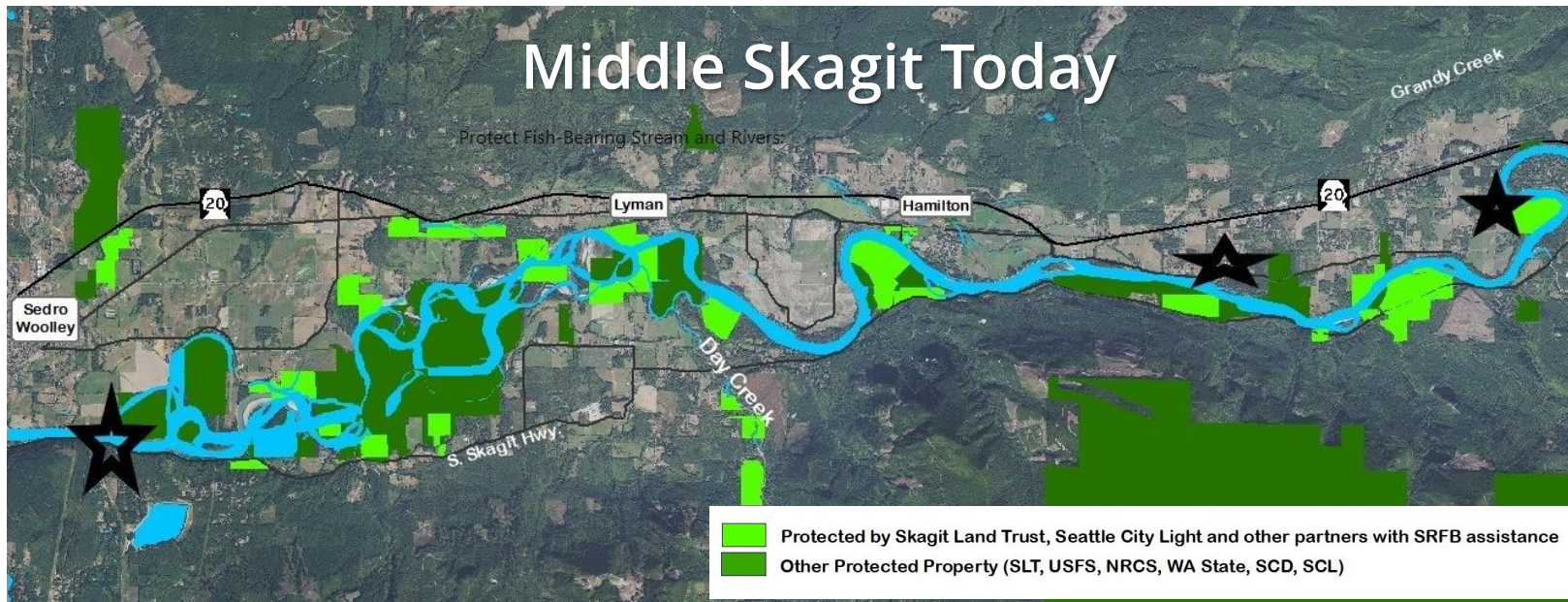
Skagit River CE near Birdsvie

Deception Pass State Park

Barney Lake Conservation Area



# Skagit River Floodplain Conservation Growing



# A conservation easement near Birdsview was expanded to protect more salmon habitat



11 acres added to expand protection to over 120 acres.

More than a mile of Skagit River shoreline protected at this property!

# This year, several projects were assisted by Washington State Recreation and Conservation Grants



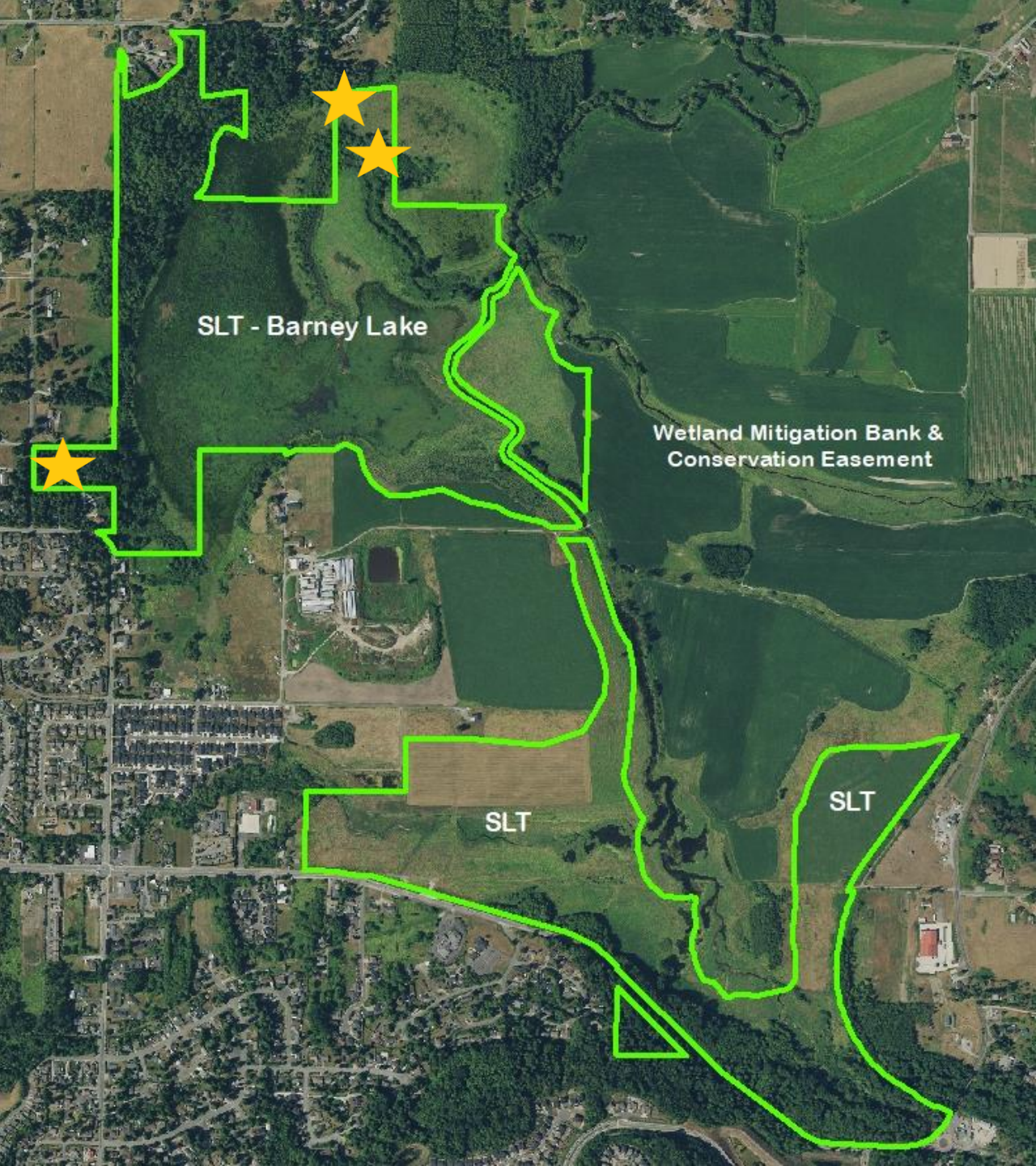
# Critical Fish and Wildlife Habitat



Phil Green photo



# Barney Lake Conservation Area Expansion



Three projects added 14 acres to Barney Lake

Now over 375 acres protected there!



# Barney Lake – Home of the Trumpeter Swans



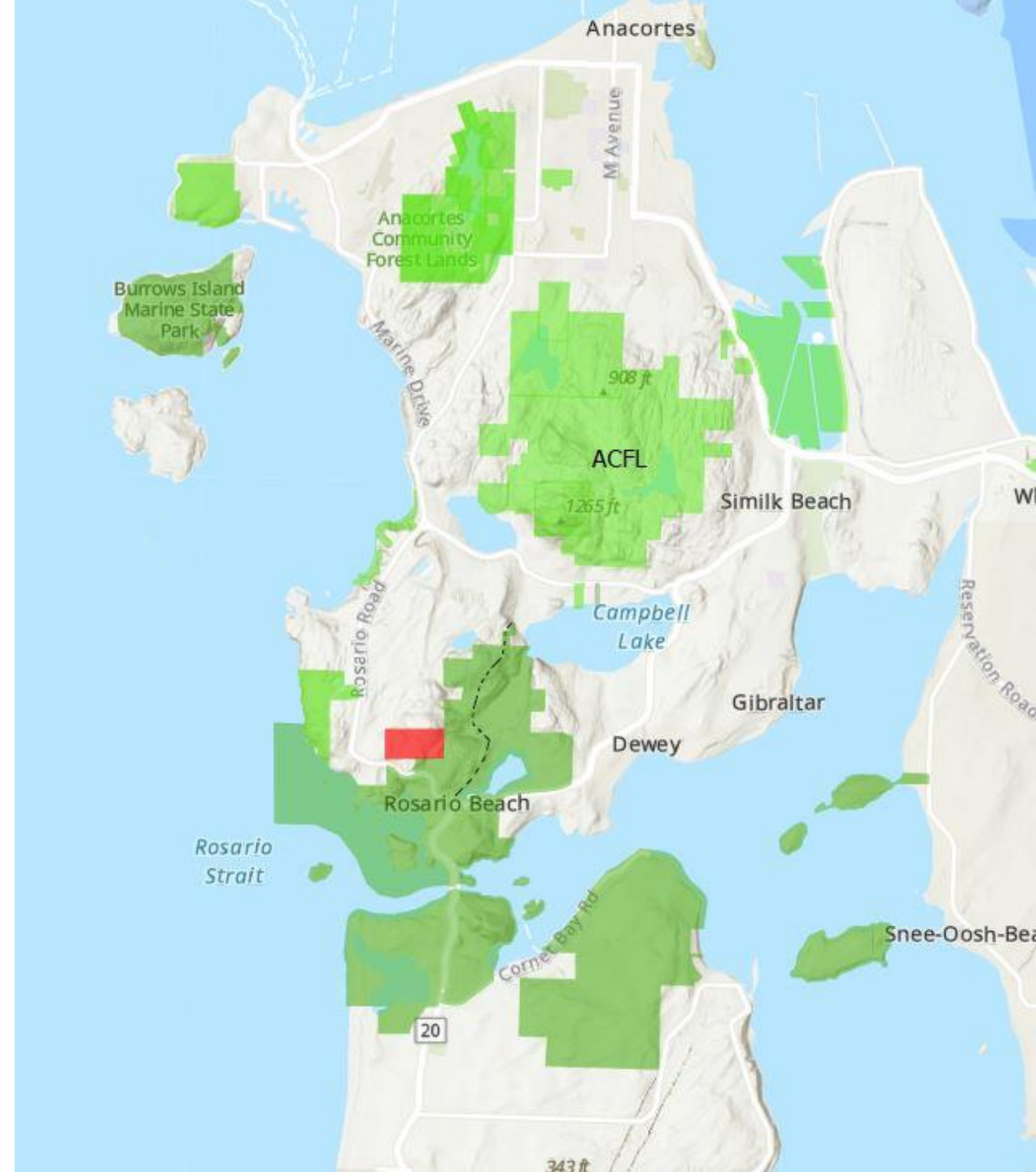
# Deception Pass Park State Park 78 acres added!



# Deception Pass Addition

## Skagit Land Trust:

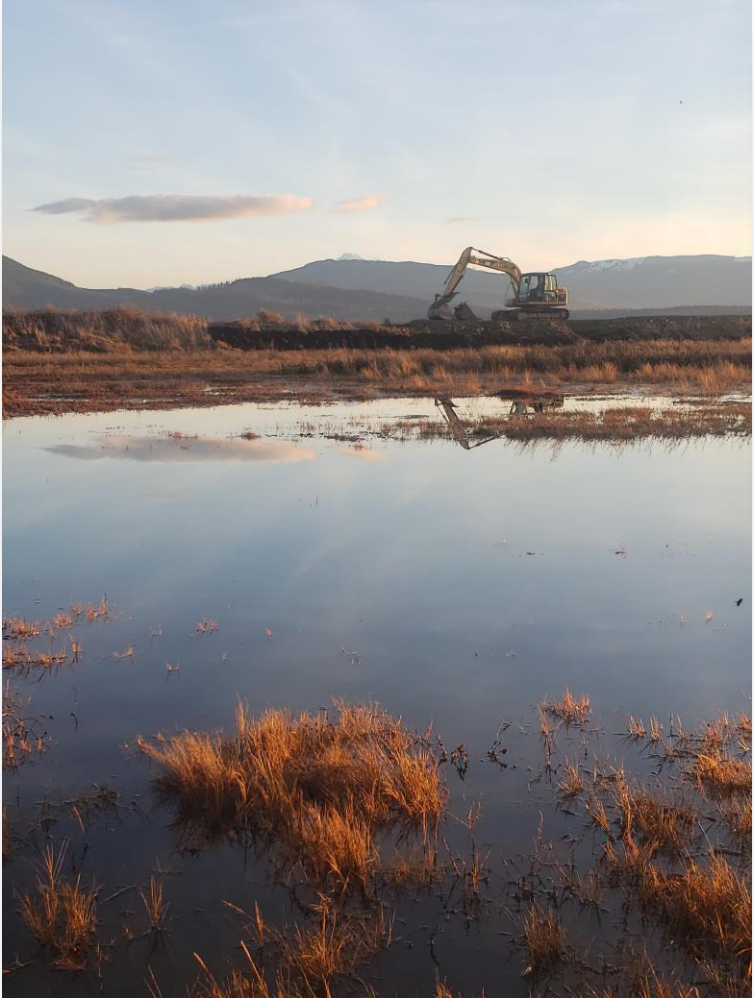
- Worked with the landowner from beginning
- Partnered with South Fidalgo Neighbors, Skagit County Parks, & State Parks
- Supported a state grant request for the Park
- Navigated many intricacies to make this three-year effort happen



# Conservation at the entrance of Samish Island grew by 73 acres



# Samish Island has a dynamic coastal environment, on full display during recent king tides



# Samish Island habitat restoration study is in progress



# Iconic Guemes Valley Barn Stabilized





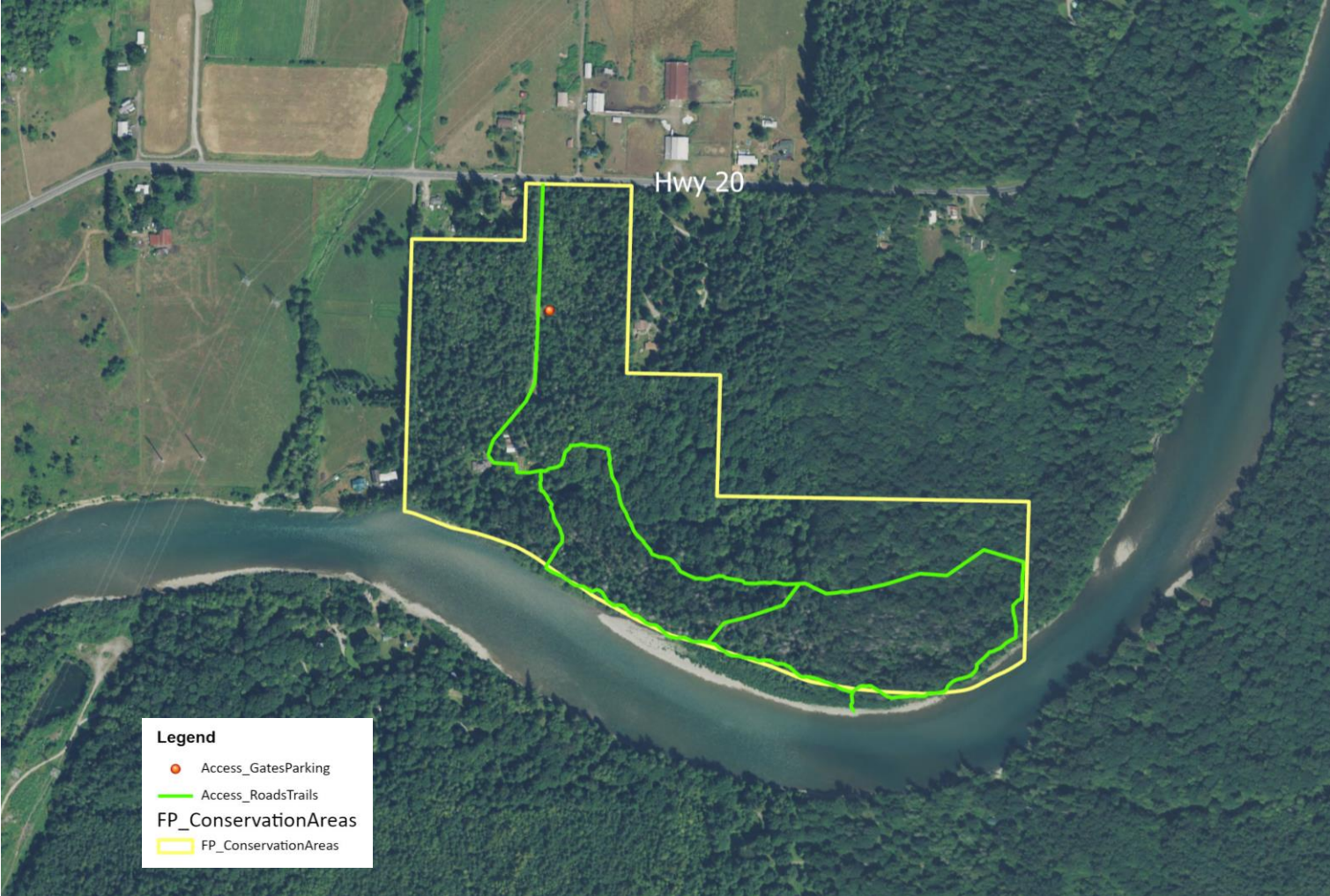
# Guemes Valley Wetlands Shorebird Restoration



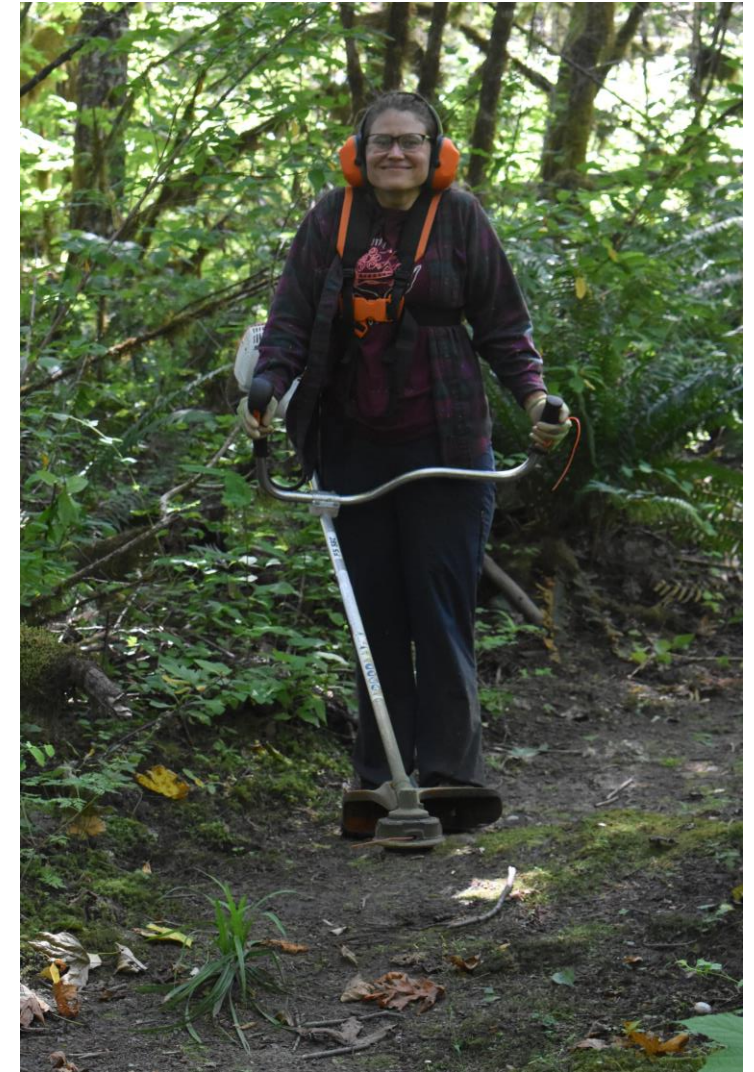


# Guemes Mountain Trail Improvements and Guemes Valley Wetland Overlook Created

# Marblemount Conservation Area Clean-Up, Restoration & Trail Work



# Marblemount Conservation Area Trail



# Marblemount Conservation Area Salmon Habitat Protection



# Volunteers Rock!

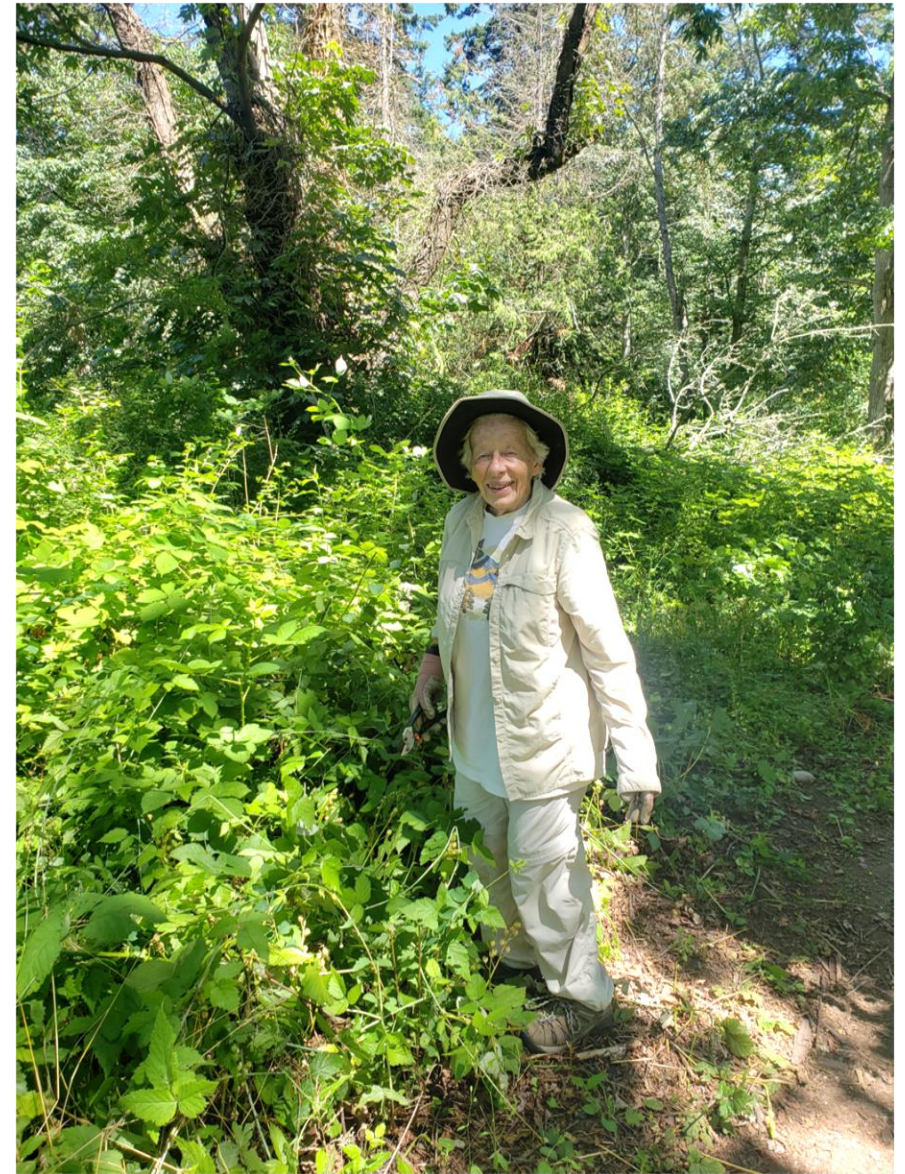




**Volunteers sandbagging at Samish Island Conservation Area**











**Thank You Volunteers!**

# Wildlife-Friendly Public Access

- Recreation affects wildlife
- Wildlife and plants need places without people
- We consider wildlife impacts in all our plans for trails, viewing areas, and set-aside areas.



# Our Stewardship Decisions Matter



**Guemes Mountain Trail:**  
By directing access with trail structures bald habitats can be protected and still appreciated by all.





## Hurn Field:

- Wildlife viewing pullout with high visibility from SR20
- Public access within field restricted to reduce wildlife impact

# Public Policy – Advocating for Environmentally Sound Local Policies



LIVE

Schedule

Shows

Documentaries

Podcasts  
Voters' Guide

Video

News

Events

About

Support TVW



## Skagit County Northwest

- Essential Compatible Features
  - <100 acres of wetlands within 3-runway site (2%)
  - 88% of land within estimated noise buffer is compatible use
  - All site terrain sits within  $\pm 200$  feet of average elevation with no major obstacles
- Impediments to Implementation
  - ~4,000 acres of floodplains in 3-runway layout (86%)
  - 4.4 MAP within 90 minutes' drive time

Criterion Category	Essential Factor	Layout		
		1	2	3
Terrain Impact		Green	Green	Green
Property Acquisition		Green	Green	Green
Environmental Justice		Yellow	Yellow	Yellow
Wetland Impact		Green	Green	Green
Floodplain Impact		Red	Red	Red
Incompatible Land Use		Green	Green	Green
Population Served		Red	Red	Red
Unaccommodated Passenger Demand		Red	Red	Red



No to a Regional Airport on prime farmland, world class bird habitat and river floodplain

# Planning ways to protect natural ecosystems, parks and trails around urban areas





# Advocating for local plans & policies to anticipate sea level rise & climate impacts



# Community Outreach



Conservation Classroom at Utopia Conservation Area



Kulshan Creek Neighborhood Youth



**Story Trail at Barr Creek Conservation Area**



**Earth Day at Utopia Conservation Area**



**Martin Luther King Day at Cumberland Creek Conservation Area**



**Swanrise at Barney Lake Conservation Area**



**Raft trip Down the Skagit River**



**Open House on the Land at Marblemount Conservation Area**

# Lands We Love Fundraiser for Barney Lake





**Swanrise at Barney Lake Conservation Area**



**Holiday wreath making**



**Cypress Island Boat Trip**



**Barney Lake Nature Walk**



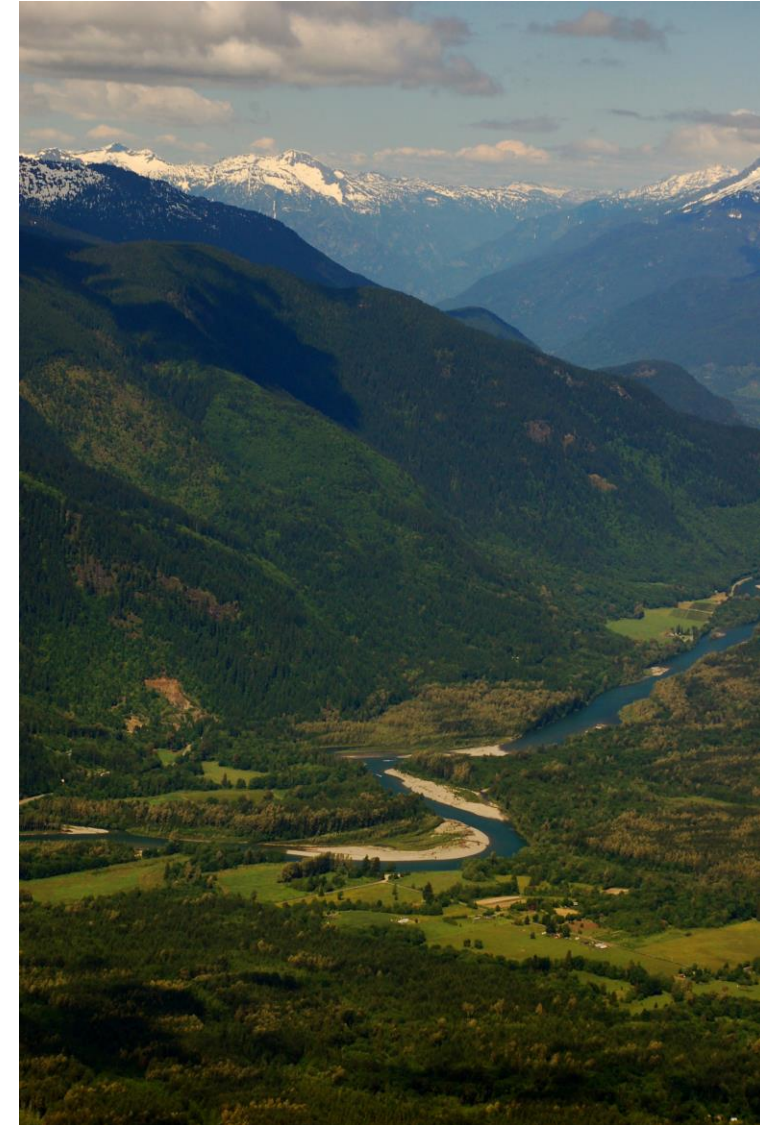
# Fantastic Partners & Landowners



# Kulshan Creek Neighborhood Youth Program Partners



# It's All Connected





**Wildlife Habitat Protection**



**River Floodplain Protection**



## Wetlands Protection



Photograph courtesy of Phil Green

**Marine Tidelands Protection**



# We are collaborators – working with members, landowners, partners, volunteers, communities and businesses





# Your board, staff and committees are mission-driven





# New Hires!



Kayla Seaforth  
Stewardship Coordinator - East County



Gabby Jacunski  
22-23 AmeriCorps Member

# Committees

- Executive
- Land Conservation
- Stewardship
- Outreach and Development
- Public Policy
- Governance
- Facilities
- Investment
- Justice, Equity, Diversity, Inclusion



# Committees are made up of board, staff and members





Thank You to our members,  
volunteers, partners,  
& landowners

*For helping to save land for all generations of people and wildlife*