



## Protecting Salmon Habitat in Nookachamps Watershed

Protecting salmon habitat motivates many of the conservation projects we undertake at Skagit Land Trust (SLT or the Trust). Our recent purchase of 15 new acres for our East Fork Nookachamps Conservation Area is no exception. This diverse wetland just east of the Barney Lake Conservation Area contributes to a major tributary that provides habitat for Chinook, coho, and chum salmon. A population of steelhead trout also relies on these waters to wend their way home.

"The property's wetlands are an integral part of Nookachamps Creek and very fishy, serving as habitat and a food source," says Skagit Land Trust's Conservation Project Manager Kari Odden, "I think that our conservation partners were just as excited about this property's protection as SLT!"

The new conservation area features 850 feet of creek shoreline and nearly nine acres of year-round wetlands that stretch like a lifeline alongside Nookachamps Creek. The remaining property is lush, forested uplands, adding even more richness to the landscape. The forested shoreline is shady, with many insects and lots of decaying wood that support salmon on their journey.

A recent assessment by Upper Skagit Indian Tribe and Skagit County Public Works confirms that this area is productive for salmon and a key piece of functioning floodplain. The report notes that the valley floor once may have been a large wetland without a single, permanent channel. Even today, the creek runs freely across this property during highwater events.

"Upper Skagit Indian Tribe has identified the floodplain wetlands where Turner Creek and East Fork Nookachamps Creek converge as high priority for salmon," explains Rick Hartson, the Upper Skagit Indian Tribe's Habitat Services Manager. "Skagit Land Trust's acquisition preserves some of the best existing habitat in this area and helps maintain options for reach-scale restoration."

*Continued on page 3...*

## Executive Director's Letter

Dear Members and Partners,

In the United States, we lose about 150 acres of natural land and 40 acres of farmland every hour -- the equivalent of Olympic National Park and most of Yosemite every year. Once it's gone, we can't get it back. To make progress we must focus and plan.

Every five years we update our Strategic Direction to clarify goals and guide our work. In addition to our core mission, this plan identifies ways to meet evolving ecosystem and community needs. Here are a few goals from our 2025-2030 Strategic Plan:

### 1. Act Now for a Climate-Resilient Future

Protect and restore climate-smart lands that will thrive for generations. Plant climate-resilient forests. Restore lands with an evolving climate in mind. Educate. Get people involved.

### 2. Protect Corridors for Wildlife

To thrive, wildlife needs interconnected lands. We want to protect the connected landscapes that will sustain species. By linking forests, farms, rivers, and conservation lands, we'll also preserve options on how these lands add to ecosystem needs, and economic and community values.

### 3. Stewardship: Caring for Land, Together

Protecting land is just the beginning -- caring for it is forever. We're inviting our community to see stewardship as an investment in healthy ecosystems, engaged communities, and enduring beauty. We'll continue to build the long-term support needed to keep these lands thriving.

### 4. Conservation and Agriculture, Working Hand-in-Hand

Farms and conservation can grow together. Our innovative agricultural conservation easements give farmers the flexibility to adapt to changing conditions while protecting soil, water and habitat. We need lands far into the future that provide food and fiber and support ecosystems.

### 5. Shaping Policy for Lasting Impact

Conservation doesn't stop at the fence line. By helping shape public policy, we can multiply the benefits of planning decisions for all generations. From advancing green spaces and trails that link our communities to advocating for planning using best available science and local knowledge including climate impacts, we'll help advance plans and decisions that match our environment and community needs.

### 6. Public Access that Protects Nature First

We know people love connecting with nature. That's why we're designing public access carefully -- with wildlife and ecosystem health as the top priority. Our focus: family-friendly trails, especially near population centers, clear education on responsible use, and partnerships.

### 7. Expanding Our Circle of Community

Conservation is for everyone. We're broadening our outreach by providing resources in Spanish, engaging outdoor sporting communities, expanding partnerships, and deepening youth involvement through schools, internships, and volunteer opportunities.

With your help, together, we'll ensure conservation reflects -- and benefits -- the full diversity of the Skagit.



Molly Doran, Executive Director



*On Guemes Mountain, a carefully designed trail helps protect the sensitive balds while allowing people to enjoy the view.*



...Nookachamps continued from page 1



Sunlight dapples the mossy floor of this newly conserved forest.



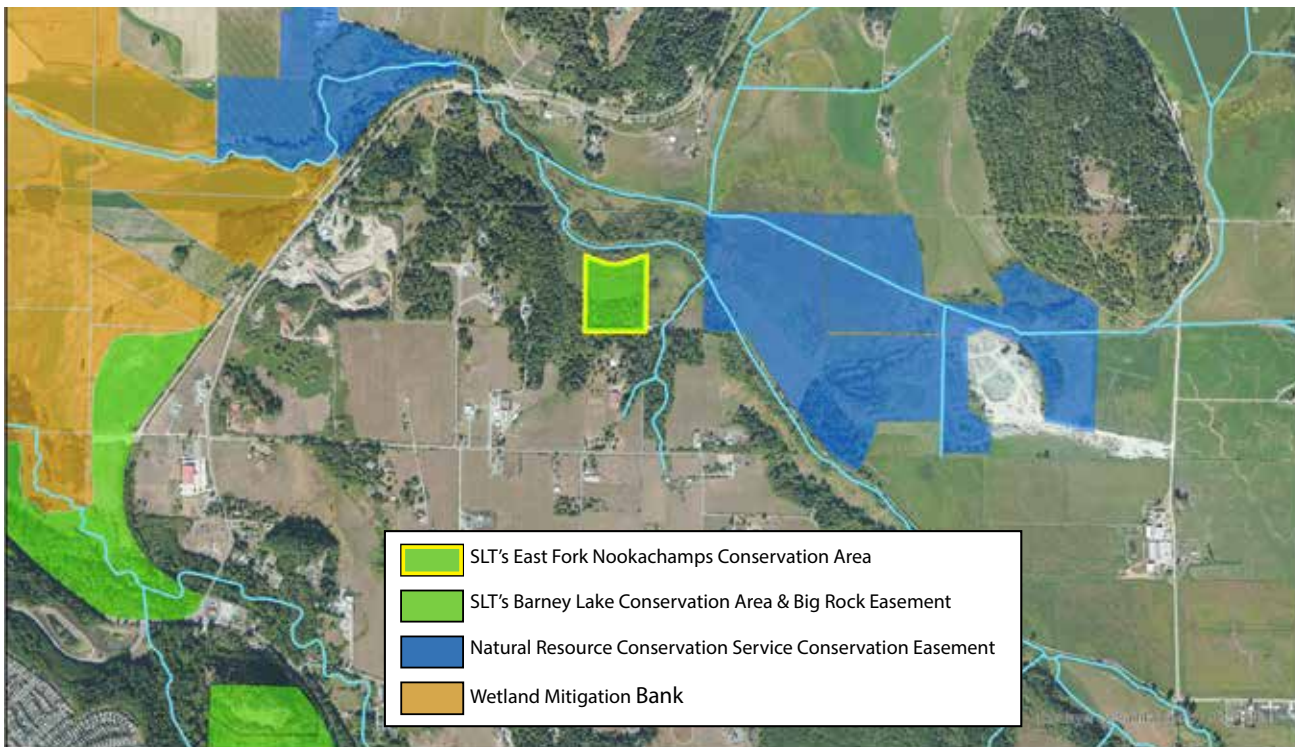
SLT staff Max Morange visits to begin making a management plan.

Our partners at Skagit Fisheries Enhancement Group (SFE) are also excited about this property's protection. It complements their salmon habitat restoration work upstream, where they have been removing fish blockages and replanting native species along Kennedy Creek, a small tributary feeding into the Nookachamps.

"We are working with landowners and tribal and county partners to enhance habitat for salmon, trout, lamprey, and all the other aquatic and wetland species that use this area," says SFE's Project Lead, Yuki Reiss. "The purchase of this property by Skagit Land Trust expands our potential restoration footprint on the East Fork Nookachamps."

The purchase of this conservation area was made possible thanks to the support of our members, Washington State's Salmon Recovery Funding Board, and Skagit Watershed Council partners. Special thanks to Skagit Fisheries Enhancement Group for connecting us with the landowners when they expressed interest in conservation.

The Nookachamps Wildlife Corridor runs from the Skagit River to southern Big Lake and beyond. Together, we've strengthened this corridor by creating a more resilient, interconnected landscape for wildlife to thrive. Thank you for helping us to keep this beautiful corner of the Skagit healthy for all who call it home.





## Annual Report -- Fiscal Year 2024 - 2025

Thanks to the support from you and other members, volunteers, landowners, and partners of many kinds, we have been able to protect more than 11,000 acres and 49 miles of shoreline since Skagit Land Trust (SLT or the Trust) was founded. We have assisted in protecting thousands of acres more.

You helped the Trust finish another great year of conservation, stewardship, and community building. Following are some highlights from a deeply rewarding year.



*Skagit Land Trust members supporting the Trust at our Lands We Love Social and Fundraiser.*

### CONSERVING LAND

**Spring 2024:** SLT expanded our Samish Island Conservation Area by adding a small but valuable piece of shoreline habitat. The new addition brought the total protected land on the approach and entrance to Samish Island to 171 acres.

**Fall 2024:** On the Cascade River near Marblemount, we purchased seven acres. This property protects 285 feet of the river and 450 feet of Lyric Creek. These are both salmon-bearing. With this addition, SLT now protects 241 acres along the Cascade River, complementing other conserved lands in this Wild and Scenic River system.

**Winter 2024-25:** Working with a local landowner, a permanent Conservation Easement in the Birdsvie area was donated to SLT, safeguarding another 122 acres of forests, fields, and farmland. These and other lands, together, function as a critical wildlife corridor. This landscape connects the Skagit River with surrounding uplands, giving elk, cougars, bears, and countless other species the space they need to move freely and adapt to changing conditions.



*Spring 2024*



*Fall 2024*



*Winter 2024-25*



*Spring 2025*

**Spring 2025:** SLT worked with landowners on Samish Bay who love their land and wanted to see all but their homesite protected. With federal grant assistance, we were able to purchase a Conservation Easement. This 128-acre property at the confluence of Edison Slough and Samish Bay is actively farmed for part of the year and then serves as bird habitat during the winter. It has 1.2 miles of marine shoreline. All these aspects are now protected under the Conservation Easement.

By conserving these lands together with thoughtful landowners, we are securing the rhythms of migration, farming, and natural processes that shape our communities and ways of life. Each conservation project is a stitch in the fabric of the Skagit, creating a landscape where nature and community can thrive side by side.



## STEWARDING THE SKAGIT

This past year, SLT's Stewardship Committee, land stewards, staff, and volunteers provided thousands of hours of thoughtful care to the lands entrusted to us. Highlights include:

**Worked in partnerships** with multiple local organizations including WA Conservation Corps, AmeriCorps, Skagit Fisheries Enhancement Group and Skagit River System Cooperative to plant trees, manage invasive weeds, and restore natural features of Skagit Land Trust's conservation areas.



*SLT and Skagit Fisheries Enhancement Group volunteers team up to plant native trees at Day Creek Forest in January 2025.*



*Samish Island Restoration leadership team discusses the project.*

### Completed Phase 1 of the Samish Island Restoration Project:

In partnership with Padilla Bay National Estuarine Research Reserve, we contracted Blue Coast Engineering to help us with the first phase of restoration planning. The goal of this project is to restore tidal wetlands to the site in a way that improves community resilience to coastal storms. Phase 1 broadly evaluated the feasibility of habitat restoration and identified the major ecological, structural and community resilience issues that will need to be studied and addressed in future project phases. The Phase 1 report can be found on Samish Island Conservation Area property page on the SLT website.

**Hosted 28 work parties.** 230 amazing work party volunteers dug out hundreds of pounds of invasive plants and planted 5,435 native trees, shrubs, and live stakes. Volunteers, land stewards, and work crews logged 2,230 hours caring for Trust lands.



*Volunteers removing invasive plants at Jackman Creek (left), Fidalgo Bay Graber (center), and Skagit River South Fork (right).*



Beyond planting and restoration work, there is the ongoing effort of addressing day-to-day stewardship challenges as they arise. From responding to incidents on our properties to removing abandoned vehicles, SLT staff worked on a wide range of issues and projects to ensure the lands we've protected with your help will remain healthy for generations to come.

*Pictured left: Stewardship committee pays a visit to the Samish River wetlands.*



## CONNECTING OUR COMMUNITY

SLT's outreach programs created diverse, meaningful opportunities for over 2,250 community members of all ages to engage with nature, conservation, and each other:

**167 volunteers contributed 1,365 hours** to support our outreach events.

**78 people participated** in bird-related events at our Samish Island Conservation Area. Our Swanrises and Goodnight Swans at Barney Lake welcomed another **182 community members** to celebrate the beauty of trumpeter swans.



*Skagit Land Trust staff Stacy Dahl greets second graders and chaperones on a field trip at SLT's Utopia Conservation Area.*



*Skagit Land Trust volunteer Libby Mills leads a birding walk at Samish Island Conservation Area.*



*Community members wait for trumpeter swans to take off from Barney Lake wetland.*

**SLT's Speaker Series drew over 175 participants**, who gathered to learn from experts on the History of Environmental Change in Skagit County, Beavers in Washington State, and Hiking Close to Home.

**15 community members monitored herons** at our March Point Heronry, watching nests, recording when eggs were laid, and tracking chicks as they grew through the summer. Their observations told the story of a successful nesting year and gave us valuable information on local great blue herons.

**SLT started a new partnership with Woodland Park Zoo.** Through the Zoo's Amphibians of Washington project, volunteers gathered and logged egg mass data in iNaturalist. This data builds a statewide picture of biodiversity and gives us insight into the health of our wetlands.



*Kulshan Creek Neighborhood Youth program participants prepare to canoe at Heart Lake.*

We also **connected with 2,000 youth** through the following outreach programs:

- For the eighth year, SLT welcomed second-grade students to our Utopia Conservation Area for nature-oriented field trips.
- We coordinated six conservation-focused field trips for the Kulshan Creek Neighborhood Youth Program.
- We continued our work with Mount Vernon High School's AP Environmental Science students at Barney Lake, monitoring water quality.
- We added new field trips with the Mount Baker Boys & Girls Club and with Skagit Wild & Free, a local homeschool group.

## Fiscal Year 2024-25 Impact By The Numbers

**264** acres & 1.4 miles of shoreline conserved forever



**7,011**

hours worked by **466** volunteers



**92**

Conservation Areas & Easements managed



**2,000**

local youth engaged with us during events or field trips



**1,500** Households supported Skagit Land Trust with a gift for local conservation



Partnered with **145** different organizations to conserve and steward land



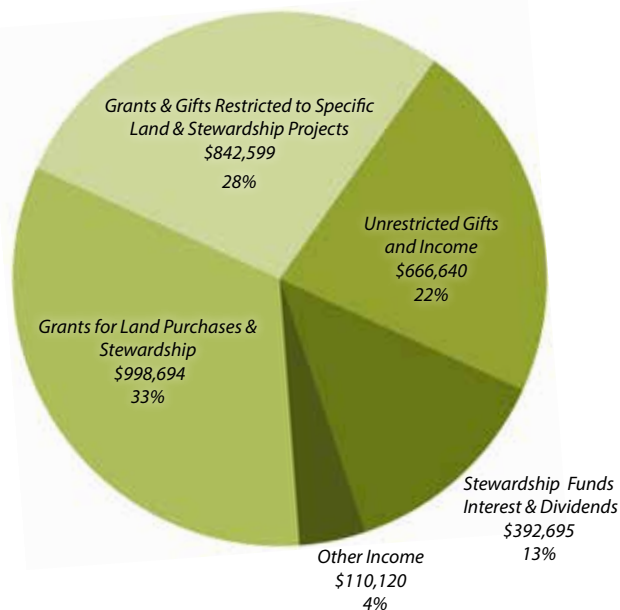
## Financial Report for April 2024-March 2025

Skagit Land Trust received a clean audit for our fiscal year ending March 31, 2025. The Trust's general operating and program expenses were \$1,586,378. We also spent \$1,255,117 to purchase conservation easements and land. The Trust received Charity Navigator's highest rating of four stars.

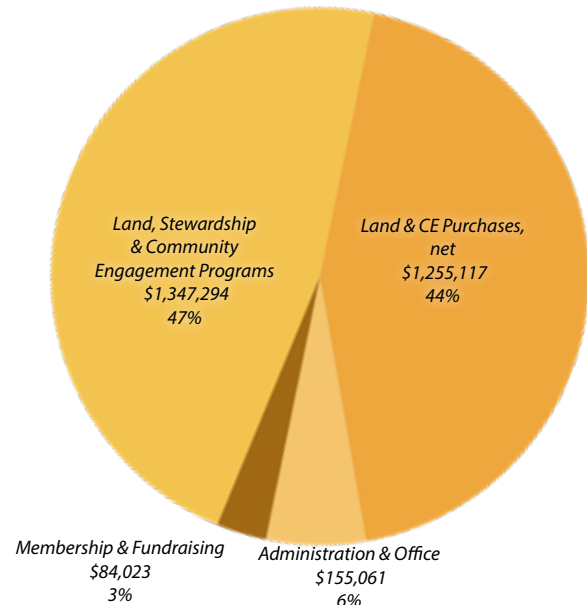
SLT's funding comes from diverse sources, which helps to provide financial stability and sustainability. About 50% of our income came from 1,500 member and supporter households and businesses. Funds to purchase land were assisted by state, federal and foundation grants. The stewardship program, which cares for SLT's lands, is partially funded by interest and dividends from reserves. Member donations also help fund this work.

Not accounted for in the numbers are conservation land and conservation easement donations and the value of volunteer time -- both of which are fundamental to our success.

**Revenue: \$3,010,748**



**Expenses: \$2,841,495**





## Those We've Lost

Over the past year, the Trust lost some valued supporters, including board members, charter members, land donors, land stewards, longtime contributors, and members of our Cedar Legacy Circle. They worked with the Trust and many community partners to conserve special places across Skagit County. We honor these members for their efforts, which live on in the natural legacies they have protected for future generations.



Top row: Charles Givens, Ellen Blair, Gregory Springs, James Armagost, Pete Dewell, Doris Kohler, Dorothy Haase

Bottom row: Mac Madenwald, Mark Schuck, Renee Shain, Jim Johnson, Chris Brown, Tom Robbins

Not pictured: Rebecca (Becky) Brown, Derek Hart, Robert Huet, Lowell Knutson, Gordi Middleton, Richard (Dick) Staples. We are grateful for their contributions to our community. They are remembered.

## In Honor and Memorial Gifts (September 5, 2024 - September 5, 2025)

### In memory of Diane Altwein

Ramona Hammerly

### In memory of Belulah Anderson

Robert Anderson

### In memory of Jim Armagost

Kathryn Armagost

### In memory of Susan Barrett

Patricia & Neil Jorgensen

### In honor of Birch Beaudet & David Wertheimer

Ann Magnano & Sheri Boddy  
Ellen Wertheimer & Mark Rahdert

### In memory of Ronald Bernstein

Keith Schreiber

### In honor of Heather Bickford & Rick Haley

Veronica Hinkes

### In honor and memory of Ellen Blair

Andrea Petzel  
Anonymous Friends  
Barbara & Ross Craigie  
Bill Bode & Kate Grinde  
Carl Minor  
Caryn Jorgensen  
Chris Gordon  
Craig Johnson  
Daniel Rochberg

David & Cheryll Blair  
Eli & Carmela Pasternak  
Emma Hong  
Erin Hislop  
Fern & Bill Schmidt  
Glenn & Janice Butler Fund  
Janelle Thompson  
Jay Blair  
Jessica Farmer  
John Blair  
Julee Johnson  
Kara-Lee Ruotolo & Andrew Bae  
Karen Phillips  
Karen Troianello  
Katherine Bostick  
Kerstin (Amaradhi) Gleim  
Linda Benson  
Liz Herron  
Margaret Kammerud  
Margaret Wepprecht  
Mark Schlichting  
Mary & Dean Brett  
Megan Rice  
Patricia Blair  
Rachel Godino  
Rena Bussinger  
Robin Williams  
Sandra Bruton  
Sarah Eisemon  
Soumya Sastry  
Stephen & Marla Morrow  
Susan Bussinger  
Susan Wright

### Tamar Shusteff

Taryn Fransen

### In memory of Ric Boge

Kari Boge

### In honor of Oceanna Boulanger

Tiffany Dequaine

### In honor of Michael Brondi

Stephen Crider

### In honor of Wendy Brown

David Brown

### In memory of Chris Brown

Morty Cohen & Kathryn Cavil

### In memory of Rebecca Brown

Dwight Small  
Jane Hadley & Roy Robinson  
Janet Hietter  
Linda Lewis  
Mary Bateman  
Richard Macdonald  
Shannon Phillips  
Spinnaker Trust

### In memory of Robert Burden

James Burden

### In honor of Sarah Calderon & Joe Magee

Dolly Chugh

### In memory of Harold Christenson

Charles Christenson  
Karen & Doug Radcliffe

### In honor of Stacy Dahl

Dena Petersen & Ann Buzaitis

### In honor of Carrie Dalton

Kelly Bush & Russell Dalton

### In honor of Matt Dalton

Kelly Bush & Russell Dalton

### In memory of Bruce Daniel

Malcolm Daniel & Darryl Morrison

### In honor of Robin Dearing

Valerie Berg

### In honor of Bob Decker

Cheryl Decker

### In honor of Darryll & Joyce Deritis

Barbara Petersen

### In memory of Sue Ehler

Leah Rice  
Linda Zielinski  
Matt & Bonnie Kerschbaum  
Morty Cohen & Kathryn Cavil  
Pattie Hutchins

### In memory of Ben & Lois Engelbright

Annette Woolsey & Jim Shiflett  
Skip & Kathy Stevens



**In memory of Molly Bliss Epstein**

Heidi &amp; Mark Epstein

**In memory of David Farrow**

Christine Farrow

**In memory of Rita & Don Fisher**

David &amp; Joanne Witiak

**In memory of James Ford**

Jim &amp; Joyce Anderson

**In memory of Joan Graves Vanderhoof**

Andrew &amp; Marie Vanderhoof

**In memory of Dorothy Haase**

Molly Doran &amp; Andrew Cline

**In memory of Jeff Hale**

Joseph Garcia &amp; Karen Copetas

**In memory of Dave Hansen**

Fran Hansen

**In memory of Derek Hart**

Karen Lewis-Hart

**In memory of Roxann Heffelfinger**

Peter Heffelfinger

**In memory of Jean & Sue Ellen Hefflin**

Ann Chadwick Reid &amp; Tom Theisen

**In memory of Ralph Heft**

Lisa &amp; Paul Nissley

**In honor of Steve Hinton**

Eric Hinton

**In memory of Robert Huet**

Linda Castell

**In memory of Roger Hulbush**

Gail Corbin

**In memory of John & Linda Hunt**

Diane Bednarz &amp; Peter Jepson

Marcia Hunt

Martha Wilson

Steven Thompson

**In honor of Marcia Hunt**

James Hunt

**In honor of The Hunt Family**

Nathan Moore

**In memory of Martha Jensen**

Ken Berg &amp; Jan Weydemeyer

**In memory of Jim Johnson**

Amelia Johnson-Ali

Anne &amp; Jack Middleton

Hella &amp; Hal Lee

Jane Zillig &amp; Paul Ingalls

Jeff &amp; Jessie King

Luanne Pasik

Tim Manns &amp; Brenda Cunningham

**In honor of Peter Jonsen**

Gordon &amp; Barbara Jonsen

**In memory of Ricki Knue**

Debbie Amos

**In memory of Lowell Knutson**

Esther Sunde

Gayle West

Georganne Robertson

Jerry Sells &amp; Linda Larson

Kristine Knutson

Lawrence O'Donnell

Nancy Winder

**In memory of Gerald Koffel**

Jane Koffel-Jones

**In honor of Sandra Krot & Peter****Remick**

Mary Eilla &amp; Lee Luft

**In honor of Deron Lord**

Elyse Lord

**In memory of Tom Lovejoy**

Phoebe Barnard &amp; John Bowey

**In honor of Kevin Lyon**

Gwen Piercey

**In memory of Mac Madenwald**

Chuck Howell &amp; Charlene Day

Clay Wilcox

Gerri &amp; John Gunn

John &amp; Marie Erbstoeszer

Nancy Estvold

Phil &amp; Carolynne Wright

Steve &amp; Robyn Johnson

Teri &amp; John McLachlan

**In honor of Natalie Magnus**

Keith Magnus

**In memory of Claudia Maple**

Charles Maple &amp; Family

**In memory of Roland Matthews**

Linda Ballantine

**In memory of Anne McCracken**

Scott &amp; Susan Magorien

**In memory of Mic McDonald**

Miles McDonald

**In memory of Rodger Melville**

Marion Melville

**In honor of Brooks & Kelly Middleton**

Anne &amp; Jack Middleton

**In memory of Gordi Middleton**

Judith Middleton

**In memory of Margaret Murphy**

Anne &amp; Dennis Murphy-Malinak

**In memory of Gene Murphy**

Homer &amp; Rosette Dawson

**In memory of Sean Murphy**

Paulette Murphy

**In memory of Archie & Jo Nelson**

Eric Nelson

**In memory of Dick Nelson**

Linda Nelson

**In memory of Fran Odden**

Miriam Odden

**In honor of Therese Ogle**

Birch Beaudet

Jane Brandt

**In honor of Ann & Dennis Olason**

Nadene Frazier-Westphall

**In memory of Simon Ottenberg**

Carol Ottenberg

**In memory of Kit Rawson**

Karen &amp; Jim Vedder

Kate &amp; Wayne Lunceford

Katherine Rawson &amp; Bernard duBreuil

**In honor of Graham Rawson**

Kimberlei Rawson

**In memory of Bill & Betty Rockwell**

Ken &amp; Catherine Rockwell

**In memory of Leslie Salkeld**

David &amp; Kerrie Salkeld

**In honor of Mark & Marlene Schuck**

Liz &amp; Michael Bart

**In memory of Delbert & Enid Sell**

Sue Sell

**In memory of Gregory Springs**

Patricia Kuxhaus

Sally Pagh

**In memory of Richard Staples**

Victoria Abrams

**In memory of Arnold & Mary****Stewart**

Cheryl Stewart

**In honor of Swan Road****Neighborhood**

Walter &amp; Cathy Pfahl

**In memory of Richard & Erik****Tjersland**

Shirley Tjersland

**In honor of Jim Walker**

Skyline Garden Club

**In honor of Dan West**

Marjorie Lucks &amp; Dorian West

**In memory of James Wilkie**

Anne Wells

**In memory of Jess & Maude****Willard**

Neudorfer Foundation

**In memory of Kyle Willis**

Linda Speck &amp; Ken Willis

**In honor of Ken & Anne Winkes**

Mary Winkes

**In memory of Julian & Gertrude****Yearsley**

John Yearsley

**In memory of Patricia Young**

Diane Welp

**In memory of Guthrie Zempel**

Diane Kaplan

**In memory of Dale Zeretzke**

Joyce Davis Spector

**In memory of Gloria Zillig**

Elizabeth &amp; Michael Jackets

## Current Business Supporters & Partners

**Business Supporters**

5Bs Bakery

Allstate Insurance - Annette Booth

Anacortes Kayak Tours

Aquatic Lands Enhancement Account

Arne Svendsen Trucking Inc.

Banner Bank

Blue Coast Engineering

Buri Funston Mumford PLLC

Calypso Restoration

Christianson's Nursery

Convergence Financial Partners

Dunbar Gardens

Eco-Restore Ecological Consulting &amp; Design LLC

Empirical Wealth Management

Fine Feathered Friends

Float Skagit

Foothills Toyota &amp; Honda of Burlington

Gato Verde Adventure Sailing

Gere-A-Deli

Guemes Island Resort

Hedlin Farms

Harris and Eliza Kempner Fund

Horizons Audio &amp; Video

Island Express Charters

Island Adventures

Kroger - Fred Meyer

Lautenbach Industries

Lisser and Associates PLLC

Make It Matter LLC

Mount Baker Theater

NW Habitat Management

ReCompose

Re-Use Consulting

Samish Indian Nation

Schuh Farms

Seaport Books

Silfab Solar

Skagit Audubon Society

Skagit Law Group PLLC

Skagit Valley Food Co-op

Seattle Opera

Skagit Wild Bird Supply

Stratum Group

The Eastman Company

The Stone Cottage

Union Block Bistro

Valley Vintage

Watermark Book Co

Wiggins Nursey

**Grants, Foundations, & Project Partners**

Aquatic Lands Enhancement Account

Anacortes Parks &amp; Recreation

Anonymous Foundation(s)

Beavers Northwest

Benevity Online Giving

Catholic Housing Services

Coast Salish Youth Coalition

Skagit County Dike Districts 5 &amp; 12

Dog Woods

Ducks Unlimited

EarthCorps

Edgewater Garden Club

of Samish Island

Evergreen Islands

Fidalgo Fly Fishers

Friends of the Forest

George &amp; Audrey Rasmussen

Family Foundation

Ghost Inspector, Inc

Glacier Peak Institute

Guemes Island Ferry Trail Project

Guemes Island Planning Advisory

Committee

Harris and Eliza Kempner Fund

Heron Forage Monitoring Program

Hugh &amp; Jane Ferguson Foundation

Leadership Skagit  
Linnemann Family Foundation  
Mount Baker-Snoqualmie National Forest  
Mount Vernon Police Department  
National Coastal Wetlands Conservation Grant Program  
Natural Resources Conservation Service  
Neudorfer Foundation  
North Cascades Institute  
Northwest WA Estate Planning Council  
PACCAR Foundation  
Padilla Bay National Estuarine Research Reserve  
PayPal Giving Fund  
Puget Sound Energy  
Puget Sound Energy Foundation  
Salish Sea School  
Samish Island Community Center

Samish Indian Nation  
Samish Island Resilient Access Committee  
San Juan Preservation Trust  
Seattle City Light  
Skagit Audubon Society  
Skagit Conservation District  
Skagit County Parks and Recreation  
Skagit County Public Works  
Skagit Drainage and Irrigation Districts Consortium LLC  
Skagit Climate Science Consortium  
Skagit County Farmland Legacy Program  
Skagit Fisheries Enhancement Group  
Skagit Marine Resources Committee  
Skagit River Bald Eagle Action Team  
Skagit River System Cooperative  
Skagit Watershed Council

Skyline Garden Club  
Spinnaker Trust  
Starbucks Neighborhood Grants  
Starlight Fund  
Stillaguamish Tribe, Natural Resources Dept  
Temcov Foundation  
The Burning Foundation  
The Nature Conservancy  
Towne Foundation  
Tulalip Tribes Natural Resources Dept.  
Tulip Valley Gardeners  
United Way of King County  
Upper Skagit Indian Tribe  
USDA Farm Service Agency  
US Forest Service  
Washington Association of Land Trusts  
WA Dept of Ecology

WA Dept of Fish and Wildlife  
WA Dept of Natural Resources  
WA Estuary and Salmon Restoration Program  
WA Native Plant Society, Salal Chapter  
Washington Opportunity Fund  
WA Recreation and Conservation Office  
WA Salmon Recovery Funding Board  
WA Service Corps  
WA State Parks – Deception Pass State Park  
WA State Conservation Corps  
Washington Wild  
Washington Trails Association  
Whatcom Community Foundation  
Whatcom Land Trust  
Woodland Park Zoo

## Current Individual Members

*Every effort was made to ensure all members are listed correctly. If you discover any errors, please accept our apologies and contact us so that we can make a correction.*

Joanne Abelson & Chris Goelz  
Victoria Abrams  
Erin Adair  
Brian Adams & Kecia Fox  
Don & Sue Adams  
Gordon Adams  
BJ Adams  
Evelyn Adams  
Robert Adler & Ruth Bachrach  
Mohamed Ahmed  
Kathleen & Thor Albro  
Kathryn Alexandra  
Eric Allan  
Susan Allen  
Jill Allen  
Bruce Allen  
Nick Allison  
Glenda Alm & Richard Kent  
Susan Alotrico  
Silvia Alvarez  
Frances Ambrose & Steve Hunter  
Debbie Amos  
Kristol Andeln  
Eileen Andersen  
Jim & Joyce Anderson  
Linda Anderson  
Gena & Jim Anderson  
Robert Anderson  
Paul & Dianne Anderson  
Allison Anderson  
Brie Anderson  
MJ Andrak  
Montserrat Andrude  
Anonymous Donors  
Barry Antler  
Michael Antrim  
Aubrey Aramaki  
Kathryn Aramagost  
Terry Armstrong & Eileen Valdez Woods  
Jack Armstrong  
Howard & Thais Armstrong  
Jayme Armstrong  
Andrew Ashmore  
Craig Aspland  
Kim Atkinson  
Casey Audette  
Mark & Karen Backman  
Jenny Baker  
Judy Baker  
Meredith Baker  
Richard Baldwin  
Linda Ballantine  
Sally Balmer  
Eric & Amanda Baltazar  
Peter & Judith Bangs  
Barbara Banks

Amee Barber  
Craig & Katryna Barber  
Marjie Bardan  
Chris & Jennifer Barker  
Phoebe Barnard & John Bowey  
Dennis & Christine Barnes  
Joey Barragan  
Anne & Bob Barry  
Liz & Michael Bart  
Claudia Basso  
Anne Basye  
Mary Bateman  
Birch Beaudet & David Wertheimer  
Miles Becker  
Diane Bednarz & Peter Jepson  
Lynn Beebe & Bill Halstenrud  
Cookson Beecher  
Allison Beezer & Cynthia Ferrucci  
Patti Benson  
Linda Benson  
Sydney Benson  
Ken Berg & Jan Weydemeyer  
Valerie Berg  
Al Berger  
Roxi Bergfalk  
Phillip Bergfield  
Richard Bergner  
Frank Bettendorf  
Coizie & Dicken Bettinger  
Kristen Betty  
Jim & Loretta Betz  
Elena Bianco  
Heather Bickford  
Jane Billinghamurst & Thomas Lebovsky  
Jim & Jean Birdsall  
Greg & Sue Bishop  
Cindy Bjorklund  
Franklin Bjorseth  
John Black & Jeanne Kleyn  
Hannah Black  
Claude & Annie Blackburn  
Megan Blackerd  
Amber Blackwood  
Jenna Blade  
John Blair  
Jay Blair  
Patricia Blair  
David & Cheryl Blair  
Cathryn & Graeme Blake  
Mary Blanchard  
Robert & Marie Blits  
Elizabeth Blosten & Tom Linder  
Brian Bluhm  
Steven & Kathryn Bluhm  
Paul Blum & Alison Zak

Susan Bocek  
Djana Bock & Mark Shurtleff  
Teresa & Leo Bodensteiner  
Margaret Boettcher & Lucia Enriquez  
Judith Bogataj  
Janet Boge  
Kari Boge  
John & Gail Boggs  
Megan Bogue  
Tim & Liz Bohlin  
Robert Bohlin  
Dennis Bolton  
Ros Bond & Jill Marsden  
Pauline & Bill Bonner  
Noah Booker  
Teddie Bordner  
Carol Boss  
Michael Boss  
Brett Bossert  
Katherine Bostick  
Bob & Nina Boudinot  
David Boudinot  
Marlene Boudreaux  
Christine Bourne  
Robert & Victoria Bourns  
Renate Bowers  
Ashley Bowie  
Jon & Ann Bowman  
Bonnie Bowman  
Judy Bown  
Jodi Boyden  
Janet & Tom Boyhan  
Evie Boykan  
Anne Braaten  
Jenna Brade  
Ryan Bradley  
Lucy Bradshaw  
Dorothy Bradshaw  
Cynthia Bradshaw  
Mary Brady  
Mariana Brandt  
Jane Brandt  
Kalman Brauner & Amy Carlson  
Phyllis Bravinder  
Martha Bray & John Day  
Alan Breen  
Lee Brei  
Heather Brennan  
Lisa Brenskelle  
Mary & Dean Brett  
Peggy Bridgman  
Rose & John Brierley  
Barbara Brock  
Richard Brocksmith & Eleven Vexler  
Walter Brodie & Linda Versage  
Ann Brodie-Knope

Erik Brookes  
Jodi Broughton  
Paul & Mary Brower  
Jeff Brown & Margaret Catzen-Brown  
Kristin Brown & Neil Joyce  
Michael Brown & Michelle McEachern  
Mildred Brown & Bob Salmons  
Gary & Susan Brown  
Joyce Brown  
David Brown  
Wendy Brown  
Patricia Brown  
Richard & Jean Brown  
Hannah Brown  
Jessica Brown  
Kathleen Brueger  
Cath Brunner & Eric Riedel  
Paulette Brunner  
Zoe Brunson  
Sandra Bruton  
Joe Bucek & Mary Heath  
Kurt & Janice Buchanan  
John Buchanan  
William & Elisabeth Buchman  
Phyllis Buckridge  
Sidney Budd  
Jennifer Bunke  
Karen Bunney  
Sarah Burch  
James Burden  
Joseph Burdock  
Phillip Burger  
Cynthia Burica  
Jeffrey & Robin Burn  
Kelly Bush & Russell Dalton  
Rena Bussinger  
Susan Bussinger  
Suzanne Butler  
Glenn & Janice Butler Fund  
Richard Butler  
Coleman Byrnes  
Yeni Cabellero  
Ann & Carl Cady  
Laura Cailloux  
Ann & Donald Caldwell  
Samantha Calkins  
Ron Campbell  
Bonnie Campbell  
Teala Canehel  
Debra Cannon  
Rebecca Cannon  
Stefanie Caranza  
Augusto Cardoso  
Bob Carey & Kari Odden  
Janice & Alan Carle  
Beth Carlyle-Askew

Tommy Carney  
BJ Carol  
Tom Carpenter & Marina King  
Katie Carson & Chuck Groesbeck  
Betty Carteret & Eric Shen  
Nichole Carubia & Caleb Reynolds  
Joan Casey  
Bea & Jim Casetta  
Kim Cashon Smith  
Linda Castell  
Elixia Castellanos  
Rocio Castillo-Foell  
Janet Cater  
Kimberly Cauvel  
Mark & Penny Chapman  
Erin Charles  
Anne Chase-Stapleton  
Lindsay Chavarn  
Lessa Chiaraluce  
Anne Childs & Stephen Thornton  
Emma Chinchak  
Kathleen & James Chorey  
Shirley Christenson  
Charles Christenson  
Lauren & Keaton Christian  
Dolly Chugh  
Jim Ciecko & Jo Anne Myers-Ciecko  
Tony Cienfuegos Junior  
Bill & Edie Clark  
Robert & Shirley Clark  
Jeff Clark  
Kim Clarkin  
Dionne & Richard Clasen  
Steve Clay  
Linda Cline  
Clare Cloutier  
Harold & Martha Clure  
Eileen Coan & Ross McConahey  
Galen Cobbs  
Carolyn Cochran  
Rob Coffey & Deborah North  
Morty Cohen & Kathryn Cavil  
Julia Cohen  
Asher & Cindy Cohen  
Wendy Cole  
Maggie & Larry Collinge  
Alice Collingwood  
Mike & Cindy Collins  
Bettijeane Collins  
Marc Coltrera & Anne Buchinski  
Laurie Conley  
A.J. Conley  
Erin Conroy  
Ryan Cook



Amelia Cook	Mark Donovan	Robert Feist	Matthew Goe	Jean Hawkins
Cody Cook-Winscher	Brooks Donovan	Ron Feld & Lorna Klemanski	Steven Goldenberg & Mimi Simmons	Bill Hayton & Laurence McCulloch
Virginia & Larry Cooper	Molly Doran & Andrew Cline	Jeffrey & Priscilla Feld	Peter Goldfarb	Lief & Monica Hazelet
Gail Corbin	Peter Doran	Martine Felts	Jhoanna Golez	Jim Heard
Cynthia & James Corbin	Michelle Dought	Corwin Fergus	Victoria Gomez	Bill Hebner & Lora Leschner
Amanda & Gavin Corbin & Family	Ken Doughty	Karen Ferguson	Erik Gomez	Larry & Josie Hedgpeth
Debbie & Darrell Cornelius	Geraldine Douglas	Cynthia & Joe Ferrario	Maybelline Gonzalez	Peter Heffelfinger
Claire Cotnoir	Anne Douglas Williams	Decky Fiedler & Roland Barach	Patsy Good	Bill & Cynthia Heft
Robin Cottrell	Ron Dow	Sheila Fiepke	Ginny Good	Ruth Heft
Susan Cottrell	Fonda & Ron Downs	Casey Figgins	Kristine & Roger Goodan	George & Myrna Heleker
Mick Cowles & Patty Munday	Anna Doyle	Kim & Brennan Filippini	Maxwell Goodin	Erica Helgeson
Brenda & Corey Cowley	Peggy & John Doyle	Liz Findley & John Meier	Chris Gordon	Darwin Helmuth
Rebekah Craig & Brent Young	Isaac Dozier	Denise Fischer	Kelly Gordon	Judy Hemenway
Barbara & Ross Craigie	John Draper	Cissy Fisher & Rish Pavelec	Gay Graham	Josie Henderson
Maribeth Crandell	Elizabeth Drozda	Judy Fisher	Jonathan & Heather Granger	John Hendrickson
Allen Craney	Darcy Drysdale	Nancy Fisher-Allison & Tony Allison	Wendy Gray & Mac	Bill Henkel
Graham Crawbuck	Mary Dubbel	Bette Fitzgerald	Madenwald	Linda Henley
Janet Cray	Steven Dubnoff & Marian Lowe	Thomas Flanagan & Kathleen Lorence-Flanagan	Ellen Gray	Diane Hennebert
Stephen Crider	David & Clara Duff	Zachary Flanders	Dana Greeley	Marilee Henry & Jeffrey Thorson
Joan Cross	Jack Duffy	Wendy & Joe Fleming	H. Albert Green	Jerry & Linda Henry
Nancy Crowell	Lavada Dunford	Fabiola Flores	Kathy Green	Bill & Susan Henry & Family
Debra Crowe-Vitale	William Dunlap & Ellen Rak	Rachel Fluaitt	Kristi Greenfield	Heidi Herr
Shawn Crowley & Karen Petersen	Adam Dunlap	Jason Fly	Kathleen Grimbly	Liz Herron
Mayan Cruz	Alexander Dunlap	Stephanie Fohn	Bill Bode & Kate Grinde	Janet Hersey
Laurette Culbert	Nicole Durbin	Marcia Fort	Leah Grupp-Williams	William & Ann Hetherington
Jessica Culp	Harry Dursch & Kirsten Lemke	Alix Foster & Rick Shorten	Chelsea Gudgeon	Jenny Heutmaker
Naomi & Robert Cummings	Larry & Molly Dutton	Art & Robyn Fournier	Angie Guffie	Sara Hiemstra
Jocelyn Curry Asher	Kara & Jonathan Eads	Arthur Fox	Kristine & Brady Guinn	Janet Hietter
Stacy & King Dahl	Michael & Katherine Earley	Bobby Francise	Bridgette Gunderson	Robert & Judith Higgins
Jeremy Dahl	William Easton & Tomasa Ramirez	Glenda Frank	Alexandra Gunderson	Sherry Hill & Abby Jacobs
Beverly Dale-Crunk	James Eberhardt	Martha Frankel & Tom McFall	Gerri & John Gunn	Emory Hill
Lee & Mary Sue Dallas	Devin Eckert & Christopher Remmers	Taryn Fransen	Maria Gurrok	Veronica Hinkes
Malcolm Daniel & Darryl Morrison	Susan Economon	Robert Frazier	Susan Gwost	John & Nancy Hinton
Alan Daniels	John Edison	Nadene Frazier-Westphall	Peter Haase	Eric Hinton
Larry Darienzo & Leahe Swayze	Jim & Kathy Edris	Elizabeth Frederick	Jane Hadley & Randy Robinson	Erin Hislop
Nancye D'Arienzo	Larry & Pat Edwards	Alex & Galina Free	Sharon Hagaman	Mark & Alison Hitchcock
Virginia Darvill	Craig & Noma Edwards	Piet Free	Wendy Hairfield	Bill Hlavacek & Gail Bohnhoff-Hlavacek
Raymond David	Bonnie & Les Eelkema	John Freeman	David & Deborah Hall	Richard Hoag
Doug Davidson & Lynne Wenberg-Davidson	Karen Eichler	Kelsey Freeman	Martha & Robert Hall	Michael Hobbs
Julie Davis & Mark Dixon	Diane Eiesland	Eugenie Frerichs	David & Catherine Hall	Amy Hockaday
Catherine Davis	Mark Eikeland	Christine Friday	Patty & Uli Haller	Fred Hodge
Karen & Richard Davis	Sarah Eisemon	Melinda Friedman	Michael Hallett	Ted & Beverly Hofer
Jan & Randy Davis	Jerry & Marilyn Eisner	Denise Friend	Eli Halpern	Mary Hoffman
Joyce Davis Spector	Julita & Robert Eleveld	Arthur & Chris Fuhrmann	John & Jane Halsey	Diana Hoffman
Homer & Rosette Dawson	John Eleveld	Roger Fuller & Mary Silva	Jay Ham & Jan Hersey	Nancy Hoffman
Briana Day	Wendy Ellison	Danielle Fuller	Ramona Hammerly	Micahel Hogan
Leona De Rocco	Kathleen Ellsbury	Brad Furlong & Eileen Butler	Amy Han & Brian Berry	Shirley Hoh
Nancy & Stephen Dean	Craig Emery & Lynn Postler	Joe & Terri Gaffney	Kristen & Bryan D Hancock	Sara Holahan
Ariella Dean	Catherine Endicott	Ana Galindo	Ernie & Joan Handelman	Mary Ruth & Phillip Holder
Robin Dearing	Carol & Jon Engels	Judy Gamble & Todd Wood	Jerilyn & Marc Hander	Sarah Hollingsworth
Cheryl Decker	Klaudia Englund	Jonathan Gamson	Fran Hansen	Joyce & Leigh Hollywood
Joan DeClaire	Dannon Engquist	Neha Gandhi	Fred & Ellen Hanson	Irene Holroyd
Linda & Scott DeGraw	Walt Enquist	Joseph Garcia & Karen Copetas	Jana & James Hanson	Karin Holt
Maggie Degregon	Debbie Ensey	Lawrence Garcia	Tracy Harachi	Emma Hong
Frank Del Gaudio	Bill & Susanna Epler	Ken & Joan Gard	Mark & Rita Harbaugh	David Hoofnagle
Pat & Dick deLaChapelle	Heidi & Mark Epstein	Sarah Gardam	Mike Harding	Kathleen & Nelson Hoose
Diane Denison & Robert Quirk	John & Marie Erbstoeszer	Karen Gardiner & Philip Brown	Mary Mae Hardt & Scott Andrews	Steve & Gail Hopley
Tiffany Dequaine	Kim Erickson	Karla & Steve Garey	Sheri & Brian Hargus	Barbara & Duane Horton
Marilyn Derig	Brian Errol	Christie Gascoigne	Carol & Kit Harma	Jeff Howard
Irene Derosier	Sarah Eskenazi	Carolyn & Ed Gastellum	Kelly Harper	Sean Howard
Chad DeSeranno	Emilio Esparza Salazar	Robert & Rebecca Gates	Mer Harrell	James Howbert
Karen Desko & Beth Strack	Jessica Espy	Robert & Ellen Gatton	Laura Harrigan	Chuck Howell & Charlene Day
Matthew Desvoigne	Elizabeth Esser	Annie Geer	Louise Harris	Pam & James Hoyle
Dave Dethorn	Roger & Leslie Estep	Carly Geraci	David Harris	Kaylene Huebel
Rebecca Detrich	Emma Estep	Randy & Lisa German	Deryl Hart & Pascale Michel	Robert Huet
Bobbi & Thomas Deutsch	Susan & Alan Estep	Jessica Gigot & Dean Luce	Linda Hart & George Thelen	Gene & Bette Huff
Bill & Joyce Dewey	Nancy Estvold	Stephen Giles	Matt Hart	Leslie & Randy Hughes
Mary & Robert Dickinson	Doug & Cheryl Everhart	Linda Giles	Donald Hartline	Sally Hulbush & Wayne Johnson
Addelle Diedesch	Nick Fahey & Deborah Martin	Robert & Jean Gillespie	Laura Hartner & Scott Weatherly	Marcia Hunt
Liam Diephuis	Susan Fahey	Dave & Nancy Gillespie	Jack Hartt	James Hunt
Jeremy Dierst	Esmeralda Faries	Amy Giltner	Richard Hartung	Susan Hunt
Bill & Holly Dietrich	Jessica Farmer	Charles Givens	Joyce Harvey-Morgan	Marianne Hunter
Robert Dinehart	Michael Farmer	James & Paula Glackin	Benjamin Haskell	Stephen Hunter
Paul Dinnel & Vicki McNeil	John & Carol Farnsworth	Tom Glade & Brenda Lavender	Dyvon Havens	Julia & John Hurd
Janice Dionne	Sara Farr	Jon Glastra	Chris Hawkins & Sayre Hodgson	Peter Hurley
Lani & Michael Dodge	Judy Farrar & Eric Knudsen	Kerstin Gleim		Pattie Hutchins
Denise Dodge	Christine Farrow	Jeanne Glick & Jean Leib		
Ivar & Phyllis Dolph	Shannon Fath	Rachel Godino		
Lani Donohoe & Tom Griffin				

## Encouraging a Sense of Place in the Skagit

It has been a busy summer for Skagit Land Trust's Kulshan Creek Neighborhood Youth Program. Local youth and their families biked the Kulshan Trail to downtown Mount Vernon during the Tulip Festival, paddled Glacier Peak Institute canoes across Heart Lake (below left), set sail with the Salish Sea School on a naturalist-led boat trip (bottom right), and spent the night immersed in nature at North Cascades Institute's Mountain School (below right).



Through these field trips, SLT staff worked to build safe spaces for participants to step outside of their comfort zones and connect with nature in new ways. While canoeing at Heart Lake, some children seemed hesitant -- they had not been in a canoe before and were unsure about joining the adventure. Several kids felt the same way as they embarked on the 'big canoe' at Mountain School.

Staff were able to support participants as they braved these new experiences. Each trip offered more than just an adventure. They helped youth deepen their sense of place in the Skagit, encouraging a connection to local ecosystems, landscapes, and one another.

Through shared experiences outdoors, the Kulshan Creek Neighborhood Youth Program supports the next generation in becoming adults who care for the places where they live.



## Individual Members (continued)

Tim Hyatt & Nicolette Harrington	Steve & Robyn Johnson	Diane Kaplan	Steve King & Susan Russell	Marianne Kooiman
Jacqueline & Craig Illman	Paul Johnson	Melissa Karaff	Jeff & Jessie King	Linda Korten & Jim Burnison
Margarete & John Insull	LJ Johnson	Pat Karlberg	Treva King	Rae Kozloff
James & Jan Irwin	MJ Johnson	Julia Kasper	Lauren King	Beth Kraig & Suzanne Klinger
Kate & Randy Jack	Noah Johnson	Sophia Kast	Elaine & David Kirshenbaum	Eric & Laura Kraig
Elizabeth & Michael Jackets	Jami Johnson	Kimberly Katz	Michael Kirshenbaum	Gretchen Kraig-Turner
Sego Jackson & Raven Jirikovic	Allan & Eden Johnson	Benjamin Kaufman	Lori Kirsits	Jannette Kramer
Nelle Jacobson	William Johnson	Stephanie Kaufman	Nicole Kitchen	Jeffrey Krapf
Tracey Jaeger	Ron & Susan Johnson	Vincent Keane	Barbara & Gene Kiver	Bobbi Krebs-McMullen
Kathlyn James	Martin & Anita Johnson	Leah Keefer & Owen Ward	Kat Klass	Tom Kress & Anita Gras Bryant
Kaitlan Jang	Mark & Jeanne Johnson	Conor Keilty	McKenna Klein	Linda & Steve Krippner
Kaitlyn Janicki	Barbara J Johnson	Donna Keller	Joan Knowles	Vanessa Kritzer & Trevor Willett
Shelby Janklow	Amelia Johnson-Ali	Ron & Jo Keller	Paul Klein	Karen Krub
Monica Jaress	Taylor Jones	Diane Kelso	Barbara Kline	Elizabeth Kuehn
Portia Jauron	Helen Jones	Wendy & Hugh Kendrick	Nikki Klinger	Jim Kuhn & Claudia Ross-Kuhn
George Jay	Samantha Jones	Kathy Kennedy	Leendert Kluft & Yvonne Catala	Linda Kuller
Lauren Jaye & Billie Robinson	Marla Jones	Kelsey Kennedy	Joan Knowles & Howard Dawson	Robby Kulp & Vanessa Fox
Chip & Laurie Jenkins	Gordon & Barbara Jonsen	Matt Kennedy	Kate Knowles	Karen Kunde
Brooke Jillian	Lynne Jordan & Dennis Clark	Marilyn Kenney & Jim Johnson	Liz Knowles	Anne & Bob Kuntz
Jim Johannessen	Martha Jordan	Matt & Bonnie Kerschbaum	Eric Knudson	Rusty Kuntze & Libby Mills
Larry & Wanda Johanson	Patricia & Neil Jorgensen	Terry Ketcham	Kristine Knutson	Konrad & Herta Kurp
John T Buchanan	Caryn Jorgensen	Kari Kiaris	Kari & Daniel Knutson-Bradac	Christina & Michael Kurtz
Kirk Johnson & Lori Nordgulen	Kevin Judson & Emily McLuen	Nina & Jeff Kidd	Jane Koffel-Jones	Patricia Kuxhaus
Sharon Johnson	Jane Kadlubkiewicz	Marjorie Kilbreath & Dean Townsend	Jordan Kohl	Delberta Kyle
Craig Johnson	Clint Kahler	Kathy Kilcoyne & Jon Vanderheyden	Dick & Doris Kohler	Terry Kylo
Thomas & Lane Johnson	Rosemary & Keith Kaholokula	Philip Kincare	Mackenzie Kok	Sheryl Kylo
Julee Johnson	Zak & Melissa Kalles		Eden Koljord	
	Margaret Kammerud		Rolf Konig	



Frank Lacey & Jeroldine Hallberg	Beau MacGregor & Ryan Castle	Robbie MacManus	Malinak	Rosalind Parkinson
Jere LaFollette & Wende Sanderson	Mac & Linda MacGregor	Ruth McNally	Dianne Murray	Leslie & John Parks
Margo Lalich	Meredith & Richard Machin	Dick & Bettie McNeely	Kathleen & Mike Murray	Luanne Pasik
Miriam Lambert	Apryl Mack	Liz McNett Crowl & Todd McNett	Jeff Muse & Paula Ogden-Muse	Donald Passarelli
Karen Lamphere & Timothy Alaniz	Martha Macri & Judy Alexander	Ken McRae	Richard & Gina Myers	Eli & Carmela Pasternak
Doug Lane & Michele Hamilton-Lane	Susan Madsen	Lisa & Daniel McShane	Megan Nann	Joy Patman
David & Georgia Lang	Maria Magana	Durward Mcvay	Ann Naymie	Jim & Linda Patterson
Phillip Lankford	Keith & Joan Magee	Ruth Medina	Keren Necaie	Erica Pauer
Alejandro Lanz	Ann Magnano & Sheri Boddy	Sue Mehler	Robert & Catherine Nelson	Barbara Paul Mayer
Patricia Larkin	Father Paul Magnano	Eric Mehler	Linda Nelson	Molly & Robert Pavia & Family
Nancy & Les Larsen	Donald & Mary Magness	Danielle Meins	Eric Nelson	Susie Paxman
BJ Larson & Mary Gannon	Keith Magnus	Tia Melhus	Kim Nelson	Peggy & Brian Paxton
Karma Larson	Scott & Susan Magorien	Richard Mellon	Karen Nelson	Leeanne Payne
Mary & Mark Lascelles	Glen & Kathryn Mahan	Dan Nelson	Dan Nelson	Paul Pearce
Christine Lavra	Brandon Mahoney	Kathryn Nelson	David Nesvold & Amanda Kowalsky	Sina Pearson
Marcia Lazoff	Phil & Jennifer Maillet	Leslie Menard	Mary Newbury	Mark Pearson
Kathleen & Tim Leach	Dominique Maillet	Scott Mennella & Anne Sidbury	Natalie Niblack	Herbert Pearson
George & Pamela LeBlanc	Meagan Maillet & Eric Couilliard	Roger & Mary Ann Mercer	Linda Nichols	Sarah Pedersen
Simon LeClair	Mina Malek	Elizabeth & David Meredith	Terry & Sue Nightingale	Deborah Pedersen
Barbara LeClair	Mary Maloney	Ruth Merrick	Mark Nihart & Miriam Amos-Nihart	Nora Pederson
John Scott Lee	Tim Malsch	Glenda Merwine	Lisa & Paul Nissley	Pat Pedigo
Linda Lee	Tim Manns & Brenda Cunningham	Nahaleana Metcalf	Karen Noble-Newman	Mark & Marcella Peek
Hella & Hal Lee	Charles Maple	Anita Meyer & Josh Greenberg	Lecia Noel	Charles & Marnie Pennington
Bonnie Lehecka	Jacob Marcial	Judith & Gordi Middleton	Katherine Norris	Margy Pepper
Meris Lehecka	Jean & Ed Markus	Anne & Jack Middleton	W. J. Nothaft	Sheila Pera
Matt Lerner & Jo Saltmarsh	Daniel Martin & Patsy Botsford-Martin	Kelly & Brooks Middleton	Ann Novak	Alex Perez
Larry Lesser	Janice Martin & Doug Robinson	Ryan & Michelle Milbrath	Kindra O'Neil	Jesús Pérez-Linares
Rick & Tracey Levine	Shona Martin	Norma Miller & Erik Christianson	Kenneth Oates	Rachel Perlot
Linda Lewis	Barbara Martin	Steven Miller & Pamela Cowan	Joan O'Connell & Stephen LeCuyer	Dena Petersen & Ann Buzaitis
Jen Lewis	Carolyn & Peter Martin	Curtis Miller & Shirley Solomon	Jeanne O'Connor	Barbara Petersen
Karen Lewis-Hart	Marissa Martin	Maggie Miller & Larry Stiles	Miriam Odden	Taryn Petersen
Konrad Liegel & Karen Atkins	Robert Martin	Timothy Miller & Heidi Zeretzke	Gordon & Joanne Odegaard	David Petroy
Cameron Lightsey-Cook	Teri Martine	Mark & Alison Miller	Devin O'Dell	Andrea Petzel
Ron Lindsay & Theresa Connolly	Luca Martinez	Linda Miller	Lawrence O'Donnell	Walter & Cathy Pfahl
Bruce Lindsay	Vera Martinovich	Lisa Miller	Susan & Patrick O'Donnell	Joani Pfeiffer
Dunja Lingwood	Penelope Matthews	Patricia Milliren & Alan Cumulada	Jack Oelfke	Luke Phifer
Kate Little	Angel Matturro	Doug Mills & Beverly Faxon	Wes Ogden	Karen Phillips
Craig & Anita Little	Amy Mauldin	Lynda Mills	Therese Ogle	Shannon Phillips
William Lloyd	Brittany Maxwell	Darlene Mindrum	Pamela Okano	Robert & Enid Phreaner
Denby & Laurie Lloyd	Jeff & Ann May	Carl Minor	David & Sydney Olausen	Cindy Pierce
Michele Lobitz	Renata & Darren Maybruck	Danielle Minton	Dick Olds	Amelia Pierce
Alexandria LoCicero	Madison Mayer	Kitty & Darrell Mintz	Gabriel & Jeanne Olmsted	Gwen Piercey
Holly Lockwood	Thomas Mayes & Tami Thomas	Kyla Mitcham	Mike & Bonnie Olpin	Gene Pittenger
Kat Lohman	Nan Maysen	Gregory Moga	Allan Olson & Charlotte Underwood	Regan Pitts
James London	Samantha Mayville	Anne Moldrem	Judy & David Olson	Janice Place
Kathryn Longfellow	Sarah McCabe	Tracy & Gilles Montaron	Andy Omdal	Skochii Polchlopek
Deron Lord	John McCallum	Phil Montgomery	Justin Oram	Sarah Polk & Catherine Carr
Elyse Lord	Bill & Dana McCarthey	Erin Moore & Fritz Stahr	Anita Ordenez	Dennis & Lori Pollett
Carolyn Lord	Carolyn McCarthy & Kent Chasson	Nathan Moore	Denny Organ	Julia Polter
Mary Lorence	Judy McCeland	Marlene & Jim Moore	Tiffany Orne	LeDonna Popp
Gary Lorenz	Patricia McClure	Gabriel Moore-Cifuentes	Virginia & Stephen Orsini	Martha Porteous
Steven Lospalluto	Kendra McConnell	Janet Morgan	Jeffrey Osmundson & Colleen Shannon	Erika Porter
Beau & Linda Loughlin	Nathanael McConnell	John Morgan	Barbara O'Steen & Howard Mitchell	Susan & Jerry Posten
Monica Lowe	Jennifer McCoy	Sara Morris	Dana Oster	Lynn Postler & Craig Emery
Janet Lowry	Savanna McCoy	Jenni & Ken Morrison	Cara Ottele	C.H. Poth
Douglas Lowry	Mary Kae McCullough	Brent Morrison	Carol Ottenberg	Maggie Potter
Steven Lucco	Miles McDonald	Ryan Morrison	Del & Debi Ottinger	Danica Prado
Alex Lucero	Miles McDonald	Stephen & Marla Morrow	Tracy Ouellette	Lynn Prewitt
Marjorie Lucks & Dorian West Lee Luft	Alec & Sandy McDougall	Michael Morrow	Beth Owens & Greg Roberts	Anita Price
Kate & Wayne Lunceford	Morna McEachern & Grant Brockmeyer	Karie Morton	Sally Pagh	Norma & David Priebe
Laurie Lundgren	Bonnie McFarland & Denny Organ	Mary Moser & Mike Hayes	Jeri Pagh	Pamela Pritzl
Patricia Lundgren	Jeff & Jody McGowan	David Moser	Laura Paise	Denny & Laurie Quirk
Kippi Lundgren	Tara McGown & Kevin Crozier	Terry Motter	Natasha Palaceta	Layth Rabieh
Patrice Lundquist	Emma Jean McGreevy	Carolyn Moulton	Carol Ottenberg	Karen & Doug Radcliffe
Mark & Teru Lundsten	Emma Jean McGreevy	Greta Movassaghi & David Adams	Del & Debi Ottinger	Hildegard Radke
Esther Luttikhuisen & Brad Claypool	Cynthia McGuinness	Kristin & Steve Mowat	Tracy Ouellette	Lise Rahdert
David & Deborah Lycette	Sid McHarg	Bev & Jim Mowrer	Beth Owens & Greg Roberts	Laura Rainey
RobertLynn Lyke	Nan McKay	Vicky Moyle	Sally Pagh	Bob & Judy Rainwater
Robert & Susan Lynch	Eiren McKay	Marcie Mullen	Jeri Pagh	Anne Raisler & Rob Crichton
Pat & Mary Lyons	Phyllis & Donald McKeen	Kristi Muña	Laura Paise	Richard Raisler
Edith MacDonald	Janet McKinney	Michael W. Murdock	Natasha Palaceta	Ginny & Gary Ramey
Richard Macdonald	Teri & John McLachlan	Christian Murillo	Maria Palensky	Delia Ramos
Susan Macek & Dave Buchan	Constance McLaughlin	Maggie Murphy & John Dlouhy	Joan Palmer	Will Rand
	Daniel McLean	Ginny Murphy	Stephen Panshin	Morgan Randall
	Atalissa Mclemore	Paulette Murphy	Raymond Paraiso	James Randles & Melinda Brown Randles
	Philip & Susan McCloud	Anne & Dennis Murphy-	Lorna & Dennis Parent	Iola Ratcliff
			Jon Parker	Peggy Ratemann & Jim Asa
			Tawny Parker	Maureen Ratfield
			Ted & Sherri Parker	Rachel Ravitch
			Larry & Lynn Parker	
			Mary Parker-Hale	

## Individual Members (continued)

Ruth Rawhouser	Jeremy Rudo & Rona Frimmer	Kinsey Shilling	Tom Strawman & Janet Nuetzmann	Charlie & Patty Urbick
Katherine Rawson & Bernard duBreuil	Rick & Bonnie Rule	Nancy Shimeall	Poppy Strode & Mike Elfant	Carrie Urling & Scott Price
Kimberlei Rawson	Kara-Lee Ruotolo	Mark Shinkle	Matthew Strong	Kathryn Utter
Kimberlee Ray	Scott Ruplin	Ron Shrigley	Pamela Stroud	Konrad Utterback
Robert Raymond & Dorothy Downes	Madison Ryals	Tamar Shusteff	Matt Strube	Bruno Vallejo
Steffany Raynes & Lin Skavdahl	Ryan & Christina Jepperson	Steven Siegfried	Barbara & Richard Stuart	Rachel Van Boven
Jessica Redman	Andrew Ryder	Fred & Susan Sievers	Margaret Studer	Paul & Rene Vance
Bruce Reed & Jan Edelstein	Linc Ryder	Sue & Richard Sigmen	Diane & Mark Studley	Andrew & Marie Vanderhoof
Alycia Rehagen	Connie Saari	Amy & Don Sims	Kris Studzinski	Michael Vanderlinde
Ann Chadwick Reid & Tom Theisen	Sharon Sackett	Jagpal Singh & Mary Taylor	Linda & Stephen Summers	Chris Varela
Dick Reim	Doreen Sadler	Gordon Sjogren	Esther Sunde	Gary & Karen Vassallo
Mark & Christine Reis	Addison Sager	David W. Skaar	Taylor Supina	Karen & Jim Vedder
Peter Remick & Sandra Krot	Sonia Sahay	Carly Skelton	Patti Sutter & James Houston	John Verdoes & Beth Rosenstiel
Ted & Doris Rempel	Steve & Corina Sahlin	Sue Skillman & Phil Fenner	Leigh Ann & R. Greg Sutton	Nicole Vernon
Leanne Repetto	David & Kerrie Salkeld	Ann Skinner & Randall King	Li Swan	Jane & Bruce Vilders
Donna Revard & John Koon	Eric & Karrie Sanderson	Elisabeth Slabodnik	Kyle Swanson	Jane Vincent & Erik Hulsey
Richard Revoyr	Michael Santoro	Lyn Slanetz	Joyce Swanson	George & Laura Jane Viverette
Scott & Martha Rhodes	Mary Grace Santos	Marlies & John Slostad	Andy Swayne	Gregg & Erin von Femppe
Megan Rice	Malia Santucci	Terence & Lois Slotemaker	Harley Swensson	Lea von Pressentin
Leah Rice	Rick & Cynthia Sapp	Dwight Small	Dan Symonds	Erica von Thon-Thomle
Bronwyn Richards & Jay Jacobsen	Herb & Christine Sargo	Peggy Small	Glenn Szerlong	Tim Vonderschmitt
Suzette Richards	Soumya Sastry	Deborah Smeltzer & David Kingsbury	Kate Szurek	Adam Wacker
Susan Richardson	Laura Saunders	Gail Smith & Francie Chalmers	Elizabeth Talley	Kelly Wade
Jack & Cynthia Richardson	Unyque Savare	John Smith & Cheryl Harrison	Linda & Charles Talman	Jane Wagner & Bruce Bollert
Harold & Irene Richardson	Kevin & Corinne Saylor	Jay Smith & Susan Wood	Ann Tanner	Suzy & Jay Wakefield
Robert Richey & Jeanne Brovold	Terre & Rick Scappini	Robert Smith	Ann & Kevin Tate	Edith Walden
Sarah Richmond	Fred Schacht	David & Kathleen Smith	Carol Taylor & Thomas Carson	Jim & Betsy Walker
Alicia Rickert	Paul Scharping	Liz Smith	Ruth Taylor	Elise & Duff Walker
Carol Riddell	Robin Scheer	Phoebe Smith	Dennis & Mary Ann Taylor	Jen Walker
Nancy Ridgway	Sunny Scheibe	Pat Sneeringer	Tamie Taylor	Ava Walker
Jose Riefkohl	Jim & Levy Scheltens	Wyatt Snyder	Margaret Taylor	Brian Walker
Donna Rieper	Paul Schlenger	Han So & SuJ'n Chon	Ken & Linda Taylor	Shaye Walker
Matthew Riggen	Mark Schlichting	Mardi Solomon & Gene Myers	Diana Taylor	Jessica Walker
Paula Riggert	Fern & Bill Schmidt	Brad Solomon	Dean Taylor	Robert Walker
Danielle Riley	Loren & Rebecca Schmidt	Lonnie Somer	Mary & Bob Taylor	Wendy Wall & Jon Richardson
Samuel Riqueline	Arthur Schmitz & Mary Richter	Doug Sowdon & Betsy Carroll	Martha Teigen	Tracey Wallace
Laura Riquelino	John & Briel Schmitz	Linda Speck & Ken Willis	Bill & Ann Testerman	Gary & Joy Walter
Catey Ritchie	Mike & Teresa Schmoe	Laura Spehar	Bill & Joan Tezak	Warren & Linda Walz
Christy & Scott Rittenhouse	Randy & Barbara Schnabel	Ann & Richard Spiegel	Cecile Thomas	Regina Wandler & David Baer
Linda Robbins	Gloria Schnell	Nurith St. Pierre	Ian Thomas	Dederick Ward & Susan Parke
Tom & Alexa Robbins	Laurel Schoenbohm & Qben Oliver	Joan Stamm	Rick & Reinhild Thompson	Andrea Warner
Richard & Nancy Robblee	Delia Scholes & Ed Newbold	Kimberley Stanard	Steven Thompson	Allison Warner
Sarah Roberts	Dakota Schoolcraft	Dennis Stanchfield & Susan Radkins	Janelle Thompson	Chelsea Washburn
Joanne Robertson	Keith Schreiber	Ken Stanek	Hayley Thompson	Holli Watne
Georganne Robertson	Marlene & Mark Schuck	Mary Stanton	Emma Thompson	Wayne Watne
Rachel Robertson	Bradley Schuh	Charles Stavig & Candice Reid	Abigail Thompson	Rowena Watson & Paul Troka
Jan Robinson	Charles Schultz & Terri Bakke-Schultz	Brianna Steere	Phyllis Thoreson	Jim & Ranae Watson
Gary & Valerie Robinson	Luther & Maryam Schutz	Desiree Stefens	Kathy Thornburgh	Ronald & Sharyan Watts
Jessie Robinson	Scott & Lisa Schuyler	Pat Steffani	Madalyn Thornton	Charis Weathers
Matt Robson	Robert Schwartz	Irene & Shawn Steffens	Jamie Throgmorton	Regan Weeks & Scott Petersen
Daniel Rochberg	David & Jean Schy	Carol Steffy	Kate Tibbetts & Gary Henry	Barbara Weide
Ken & Catherine Rockwell	John Sedgwick	John Stein	Allyson & Dean Tilles	Julia Weinberg
Becky Rodman	John Seehorn	Pamela Stein	Craig Tilles	Alberta Weinberg
Jack Rodman & Family	Emily Segura Maze	Joanne Stellini	Jan & Bob Tivel	Saul & Shelley Weisberg
Lexi Rodriguez	Nancy Selby	Jack Stephens & Ellen O'Neill Stephens	Shirley Tjersland	Richard Weiss
Linda & Tom Roe	Anne Selby	Jane & John Stephens	Annemarie Todd	Dave Weitzel & Kayle
Brianna Roest	Sue Sell	Eileen Sterns	Michelle Tolman	Shulenberger
Annie Rojas	Jerry Sells & Linda Larson	Gale Sterrett	Mike Tong	Rom Welborn
Craig & Heather Romano	Dan Senour	TJ Stevens & Todd Rubano	Harold & Kay Torrance	Sarah Welch & Jon Riedel
Harriet Rooks	Cammy Serena	Terry & Kathy Stevens	Carol Torset	Jason & Tierney Wells & Family
Bruce Rooney & Sandra Lane	Michael Serrano	Skip & Kathy Stevens	Emily Towner	Anne Wells
Danielle Rooney	Jennifer & Mike Sevigny	Rob Stevens	David & Christine Towne	Diane Welp
Kathleen Root	Cory Sevin	Larry & Alba Stevens	Melita & Peter Townsend	Margaret Wepprecht
Lisette Roozen-Mast & Michael Mast	Nissa Shaffer	Kate Stewart & Deborah DeWolfe	Barbara Trask & Ger van den Engh	Ellen Wertheimer & Mark Rahdert
Paul Rosasco & Winni McNamara	Fay Shane	John Stewart & Heather Higgins	Anne & Gil Traylor	Ron & Jan Wesen
John & Patty Rose	Howard & Kathy Shapiro	Cheryl Stewart	Josh Treat	Gayle West
Bob Rose	Raymond Sharp	Carol Stieg	Theresa Trebon	Daniel West
Valerie Rose	Richard & Janice Shaughnessy	Charlene & Wayne Stoner	Richard & Carol Treston	Larissa Whidden
Rebecca Rosencrans	Joseph Shea	Richard Storwick	Karen Troianello	Linda Whiddon
Karen & Jeffrey Ross	Sally Sheck	Jaye Stover	Sarah Troxell	Nancy White
Joanne Rousslang	Elizabeth Sheppard & William Badgeley	Gary Stoyka & Rachel Williams	Martha Tucker	Peter White
	Robert & Myrna Sherman	Linda Strachan	Finis & Pamela Tupper	Jerry & Carol Whitfield
	Kim Sherman	Debra & John Strathman	Kent Turner & Ellen Anderson	Kathy Whitman
	Laurie Sherman		Gerald Tuttle & Kathleen Gorham	Don Wick
			Carl Ullman	Carly Wicker
				Cathie & Bert Wicklund
				Gary Wickman



Patia Wiebe-Wright  
Trent Wieburg  
Keith & Jan Wiggers  
Cheryl & Terry Wiggin  
Amy Wilcox  
Clay Wilcox  
Terri Wilde  
John & Diane Wilkinson  
Hannah Williams & Garrett Knoll  
Owen Williams  
Robin Williams  
Terry & Marci Williams  
Barbara Williams  
Christa & John Williams & Family

Joshua Williams  
Cheryl Willis  
Margaret Willmes  
Susie Wilson & Eric Hall  
Martha Wilson  
Amy Wilson  
Susan & Charlie Wilson  
Jan Wilson  
Karri Wilson  
Nancy Winder  
Mary Winkes  
Ken & Anne Winkes  
Patricia & Thomas Winkler  
Vickie Winters  
Kari Wishingrad  
Jenna Wisniewski

Cathy Wissink  
David & Joanne Witiak  
Lynn Wohlers  
Helen Wohlers  
Susan & Gregory Woirol  
Denise Wolf  
Chester Wood  
Calen Woods  
Monica Woolner  
Annette Woolsey & Jim Shiflett  
Jonathan Worley  
Karen Wosilait  
Jennifer & William Woyski  
Phil & Carolynne Wright  
Susan Wright  
Milah Wright

Aven Wright-McIntosh  
Howard Wu  
Rosann Wuebbels & George Reeves  
Robert & Kay Wuerth  
Beth Wyatt  
Andrea Xaver & Elizabeth Stewart  
Kathy & John Yaeger  
Heidi Yantz  
Louisa Yarmuth  
John Yearsley  
Neva Yorkston  
Sam Young  
Sara Young  
Danielle & Mark Young

Noelia Zendejas  
David & Rena Ziegler  
Linda Zielinski  
James & Kay Zielinski  
Jane Zillig & Paul Ingalls  
Marisue Zillig  
Barbara Zimmerman  
Paul Zoutl  
Stan Zyskowski  
Gerald & Mary Zyskowski

## Improving Wildlife Habitat and Community Access

This summer, the Trust's stewardship team advanced several exciting projects:

- Phase Two of the Samish Island Restoration Project began. This phase includes undertaking detailed modeling to assess salt marsh restoration potential.
- Staff completed an accessibility audit of six of our trail networks. This audit lays the groundwork for clearer communications and other improvements that will make it easier for more people to explore the lands we protect.
- Planning began on an upgraded Land Steward Program that will better support volunteers who care for our properties.
- The Trust partnered with many conservation partners to plant trees, manage weeds, and sustain past restoration efforts.



Each of these projects and collaborations supports healthier habitats and deeper connections between people and places in the Skagit.

*Above: Volunteers survey their work at Cascade River South.*

*Left: Volunteers pause for a break from trail building at Big Rock.*

*Bottom left: Samish Island work party participants gather for a planting demonstration.*

*Bottom right: Volunteers pose proudly with invasive plants they removed from Utopia Conservation Area.*



## BOARD OF DIRECTORS

**Kirk Johnson**, *President*  
Mount Vernon

**Warren Walz**, *Vice President*  
Anacortes

**Lynne Wenberg-Davidson**  
*Treasurer*  
Anacortes

**Tim Manns**, *Secretary*  
Mount Vernon

**Harold Lee**, *Exec. Committee*  
Mount Vernon

**Brad Furlong**  
*Fir Island*

**Jim Glackin**  
*Mount Vernon*

**Mark Hitchcock**  
*Samish Island*

**Steven H. Johnson**  
*Anacortes*

**Karen Krub**  
*La Conner*

**Mark Linnemann**  
*Guemes Island*

**Denby Lloyd**  
*Anacortes*

**Meagan Maillet**  
*Mount Vernon*

**Therese Ogle**  
*Samish Island/Anacortes*

**Kathy Thornburgh**  
*Mount Vernon*

**Barbara Trask**  
*Birdsview*

**Chris Varela**  
*Mount Vernon*

**Keith Wiggers**  
*Burlington*

**Anne Winkes**  
*Conway*

## STAFF

**Molly Doran**  
*Executive Director*

**Michael Kirshenbaum**  
*Conservation Director*

**Laura Hartner**  
*Development Director*

**Max Morange**  
*Stewardship Director*

**Jaz Strode-Elfant**  
*Membership & Office Admin.*

**Jessica Lange**  
*Conservation Project Manager*

**Kari Odden**  
*Conservation Project Manager*

**Stacy Dahl**  
*Volunteer & Education Prog Coord.*

**Sarah Gardam**  
*Outreach Coordinator*

**Emily Schauble**  
*Stewardship Coordinator*

**Jonathan Worley**  
*Stewardship Coordinator*

**Oceanna Boulanger**  
*Outreach Assistant*

**Leslie Menard**  
*Accountant*

**Phil Buri, P.S.**  
*General Counsel*



Skagit Land Trust conserves wildlife habitat, agricultural and forest lands, scenic open space and shorelines for the benefit of our community and as a legacy for future generations.

PO Box 1017 • 1020 S Third Street  
Mount Vernon, WA 98273  
[www.skagitlandtrust.org](http://www.skagitlandtrust.org) • 360-428-7878

RETURN SERVICE REQUESTED



Non-Profit Org.  
U.S. Postage Paid  
Mount Vernon, WA  
Permit No. 195

## Upcoming Events

**Salmon-Spotting and Nature Walk**  
**@ Cumberland Creek Conservation Area**  
Saturday, September 27th @ 12PM-3PM

**Blue-Tube Removal Work Party**  
**@ Tope Ryan Conservation Area**  
Friday, October 17th @ 9AM-12PM

**Fish War Film Screening**  
**@ Lincoln Theater**  
Saturday, November 15th @ 7PM

**Invasive Removal Work Party**  
**@ Minkler Lake Conservation Area**  
Friday, November 21st @ 9AM - 12PM



*The lands conserved and protected by Skagit Land Trust have been inhabited and stewarded by numerous tribes and Indigenous peoples since time immemorial. We recognize and respect the inherent, indigenous, and treaty rights of the Coast Salish People who have deep and abiding connections to these places. We seek to partner with local tribes as we conserve and care for these lands and waters.*