



## Partnership Brings a Wave of Conservation

Through the years you probably have heard Skagit Land Trust staff talk about “surfboard” projects and maybe your first thought was “Are staff working on projects while surfing in Hawaii”? We wish! Actually, we are talking about SRFB (said just like surfboard). It stands for ‘Salmon Recovery Funding Board’, a Washington State conservation program. This is a “board” under the State Recreation and Conservation Office that provides grants to protect and restore salmon habitat. SRFB has been a key source of funds for land conservation since the Trust received our first SRFB grant twenty years ago.

Since then, Skagit Land Trust (the Trust) has been a sponsor or co-sponsor of 18 SRFB grants. Through this process we have developed wonderful partnerships to help protect key salmon habitat in the Skagit. Seattle City Light has been a co-sponsor on many of our grants. By teaming together, we create stronger grant applications, share resources, and assess properties to determine which entity would be the most appropriate land manager after we purchase the land or place a conservation easement on it. Seattle City Light has also provided the majority of match needed for each SRFB grant (grant recipients must provide 15% of the grant request in match).



*Bob Boudinot walking along the shoreline at Anne Wolford County Park (formerly Nichols Bar)*

The Trust has also brought on other local groups as secondary sponsors on our grants including Skagit County Parks (a Trust SRFB grant helped to create Anne Wolford County Park), Sauk-Suiattle Tribe (this Tribe was an appropriate long-term owner of lands acquired with a Trust SRFB grant as the property was adjacent to their reservation) and the Town of Hamilton (Trust SRFB grant funds were used to acquire floodway lands in Hamilton, clean them up and assign ownership of these lands to the Town to be used for low impact recreation and habitat).

Another key partner is Skagit Watershed Council, a community partnership for salmon, that is our lead entity for SRFB grants. They advocate for, and coordinate, SRFB grant requests in Skagit County. They ensure available SRFB funds go to the projects that will make the most difference for salmon and watershed health.



## Annual Report

---

Dear members, partners and other supporters,

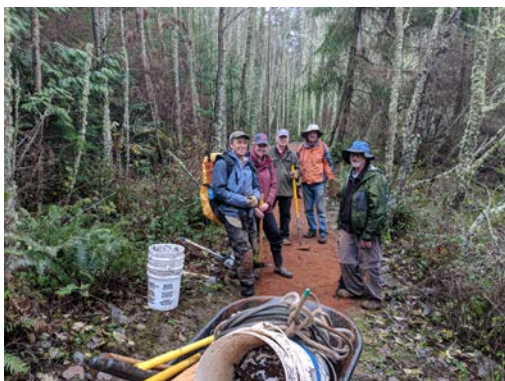
Each year in the fall, we provide an update of how your gifts were used to save and steward the lands we love here in the Skagit. Our fiscal year runs from April 1 through March 31st. Here are a few of the many accomplishments you made happen during that time. Thank you.



*The Marblemount Conservation Area features 62 acres of floodplain and forest along over half a mile of Skagit River shoreline. This is one of the many properties conserved this past year with your support. We hope to welcome visitors to the property soon.*

Nine land protection projects were completed in the year including two conservation easements, five land purchases and two land donations. Over a mile of threatened fish and wildlife habitat in the Skagit Watershed was permanently protected. The Trust began work on 15 other projects including assisting partners such as Skagit County and State Parks with land acquisition for parks and trails.

714 stewardship volunteers gave 2,498 hours to care for 45 conservation areas the Trust owns and to monitor 38 conservation easements. Natural habitat was restored on Samish Island, Guemes Island, Fidalgo Island, Big Lake, Barney Lake and on many reaches of the Skagit and Samish Rivers. 6,750 native plants were planted. Trails and public access were enhanced. The Trust hosted five interns from Skagit Valley College and Western Washington University.



*Land Steward Ian Woofenden leading trail work at Guemes Mountain; Skagit Valley College intern Mayu Inagaki, Land Steward Hal Lee, Stewardship Director Regina Wandler, and AmeriCorps Member Meagan Maillet at Cumberland Creek Conservation Area; Western Washington University intern Chris Williams and AmeriCorps Member Tori Wood planting trees at Utopia Conservation Area.*



925 students visited a Trust property to learn about natural history and to help steward the land. 40 Citizen Scientist volunteers contributed to research on herons and amphibians. Thousands of visitors came to the Trust's Conservation Areas and Public Conservation Easements that the Trust protects.



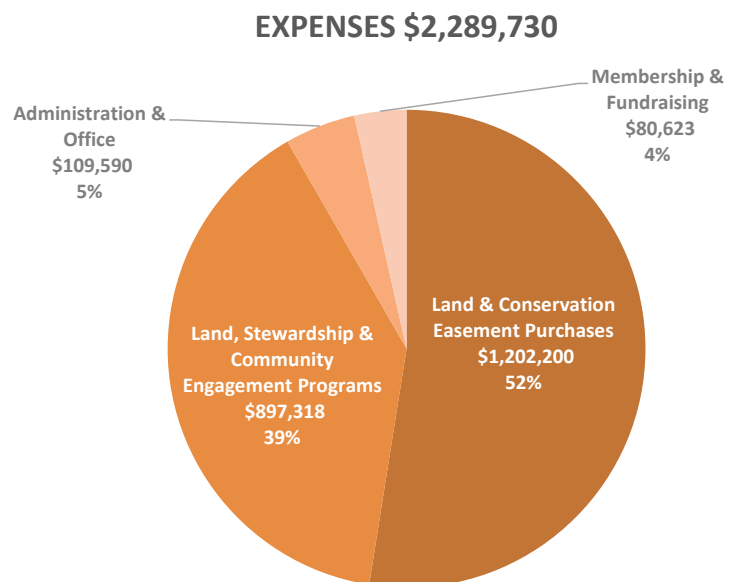
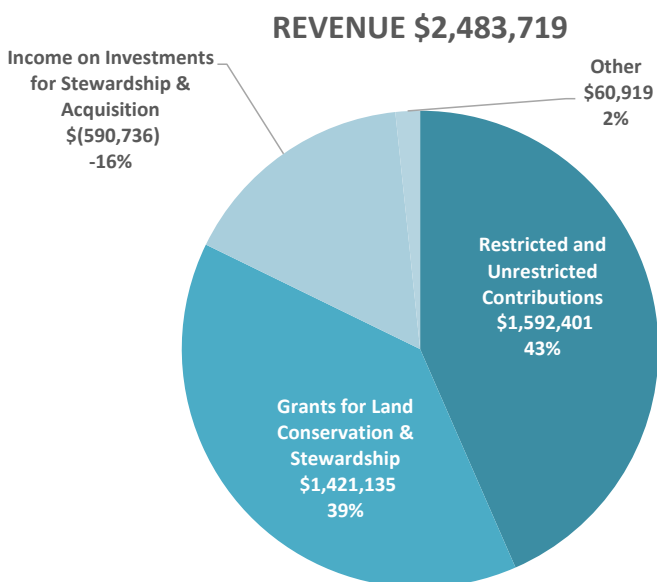
Students from Emerson Academy during a Conservation Classroom visit to Barney Lake Conservation Area with Land Steward Brenda Cunningham and AmeriCorps Member Zena Gavin; One of the many youth who participated in the Trust's joint Earth Day Celebration with Skagit Fisheries Enhancement Group at the Trust's Muddy Creek Conservation Area; A student from the Sedro-Woolley school district on a Conservation Classroom visit to Utopia Conservation Area; Land Steward Jim Johnson helping a second grade class from the Sedro-Woolley school district look for birds at Utopia.

The Trust held over 12 community and member events and tours. We worked to help advance science-based protection measures for heron-nesting sites. A Justice, Equity, Diversity and Inclusion committee was formed with board, staff, and members to ensure the Trust's programs reach and reflect the broad community that makes up Skagit County. Staff and board served on 17 local, regional and national committees and boards.



Members on a raft trip down the Skagit as part of our annual picnic; Volunteer Amphibian Monitoring Coordinator Janet Cray at Green Road Marsh with volunteers; Volunteer & Education Programs Coordinator Stacy Dahl at the Conservation District's Kids in Nature event.

**Financials for April 1, 2019 - March 31, 2020**





One of the most important partners however are the willing landowners who work with us to preserve their lands through either conservation easements or sale of property to the Trust. Our members are also valuable partners as your donations and volunteer efforts help provide needed match and funds to steward the lands. In addition, your tax dollars help support this important program.



The SRFB grant manager for the Skagit, Marc Duboiski has been an incredible advocate for Skagit projects. He gets out in the field to really understand all the projects in his region.

Skagit Land Trust's SRFB-funded land protection grants have brought over \$10,000,000 to Skagit County. Millions more of SRFB funds have gone towards planning and restoration work done by groups such as Skagit Fisheries Enhancement Group and Skagit River Systems Cooperative. The impact of these SRFB funds on our county is immeasurable – these funds preserve and improve salmon habitat; protect clean water; provide low impact recreational opportunities for our community and visitors; hire local businesses for acquisition, clean-up and restoration; reduce the threat of inappropriate development in the dynamic floodway of the Skagit; provide options for landowners interested in preserving their lands; and help keep our quality of life here in the Skagit.

## Recent Trust projects made possible with SRFB support



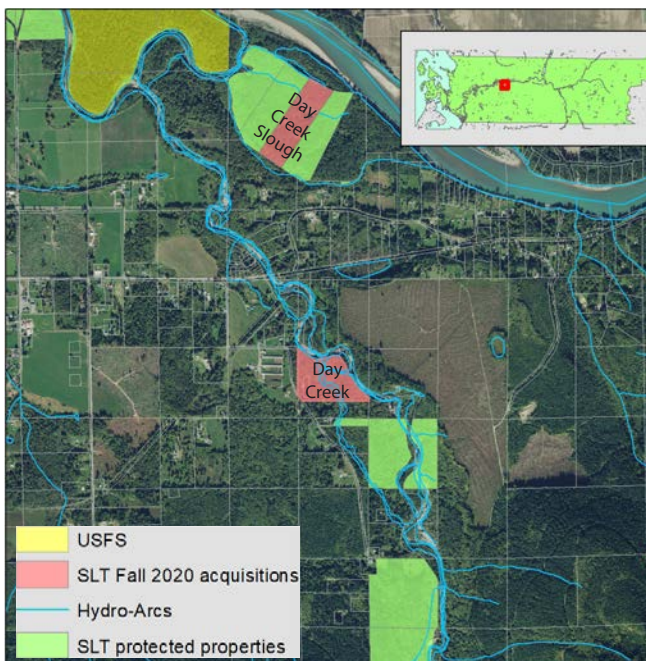
Skagit River South Fork MInor

Skagit River South Fork in the Skagit Delta was purchased in September 2020. It is adjacent to The Nature Conservancy land and has 1,200 ft of shoreline. The entire property is within the 100-year floodplain with seasonal flood channels present. Fish species present here include all five species of salmon and trout.



Diobsud Creek Addition

When driving up highway 20, look for the new addition to our Diobsud Creek Conservation Area. This is the Trust's third conservation project in a year in the Diobsud area. It is a great example of a landowner willing to sell part of his land to preserve the forest and buffer areas along Diobsud Creek. Four species of salmon and trout have been documented here. Over 53 acres are protected through SRFB funds along Diobsud Creek.



Day Creek Addition



Day Creek Slough Addition

Clockwise from far left: Map of conservation efforts in the Day Creek area; Jane Zillig and Land Steward Stan Zyskowski at the new addition to the Trust's Day Creek Conservation Area. The Trust is actively working to protect the shoreline here and in August 2020 acquired 25.5 acres with nearly a mile of shoreline. This dynamic waterway has steelhead, Chinook and pinks spawning along its braided channels; in September the Trust purchased another 20.2 acre property in the Day Creek Slough area. This property is completely in the floodway, abutts a backwater slough of the Skagit, and features 800 feet of shoreline when the Skagit River is running high. All five species of salmon have been documented on the property, as well as bull and rainbow trout.



## Thank you Jane Zillig



*Jane surveying the property at Samish Flower Farm.*

After 14 years helping to protect thousands of acres of critical natural land throughout the Skagit, Conservation Project Manager Jane Zillig is retiring this fall. Jane came to the Trust in 2006 bringing with her valuable skills from years working as a paralegal and in community service. More than anything, though, this long-time resident of the Skagit – having lived everywhere from Marblemount to Hamilton to Sedro-Woolley – brought a deep knowledge of our home’s unique places and people. We have yet to find a personality type that Jane couldn’t charm, or a corner of the valley she didn’t know.

Jane has had incredible success at the Trust: she was the project lead on 65 acquisitions, resulting in the protection of more than 3,600 acres! From Samish Flower Farm to numerous acquisitions at Hurn Field (so many that some now call it “Zillig Acres”); from the Tursi Trail to Guemes Valley; and from the Sauk to the Skagit to the islands, Jane has been invaluable in helping the Trust achieve its mission of saving land for future generations.

Jane’s success at the Trust has much to do with her mix of technical real estate knowledge and incredible people skills. Jane excels at guiding landowners of varying backgrounds through the complex real estate process, achieving the dream of seeing their land protected forever.

Martha Bray, the Trust’s former Conservation Director and the person who hired Jane, put it best a number of years ago, “Jane is a very skilled negotiator - tough and no-nonsense, while at the same time, befriendng every landowner and partner she works with. Simply amazing. Jane has pulled so many projects out of the fire, I have lost count. Keep her a secret - the State Department could use her help in the Middle East....”



*Jane with Brian Adams from Skagit County Parks, and Jack Hartt from Deception Pass State Park, celebrating the joint project the Trust worked on to create the Tursi Trail.*



*Jane doing a walk through with Ray Taipale.*

Jane’s stand-out work helping the Trust’s efforts to protect vital habitat through the Salmon Recovery Funding Board (SRFB) process required that Jane work closely with numerous partners. Washington State’s manager for the Trust’s salmon grants, Marc Duboiski, summed up why Jane has made such an impact: “Jane is a closer. She can get the deals done like none other. She goes the extra mile with everyone – landowners, colleagues, funders, ANYONE.” Jane has achieved similar success through partnerships with Seattle City Light, Skagit County, Forterra and the Skagit Watershed Council, among others.

Please join us in thanking Jane for her many years of service, and in making our home in the Skagit a better place for all. She has gone the extra mile time and time again, and we will miss her greatly!



*Left to right: at the Skagit River shoreline at the Trust’s Marblemount Conservation Area (C.A.); with landowners, Steve and Nancy Johnson, at the closing meeting for the Marblemount C.A.; giving the thumbs up to the Samish Flower Farm campaign; on a field visit to Big Lake Wetlands C.A.*

## Volunteers Stay Vital During Pandemic

With COVID-19 we have had to adjust the way we interact with each other and with the land. In April, the Trust received a Clarification of Essential Work from WA State allowing staff and volunteers to conduct some field visits in order to monitor and manage Trust lands. With this clarification (and a bit of additional paperwork!), some Land Stewards were able to work with staff to perform essential tasks.

Volunteer Land Stewards are a crucial part of our volunteer team and help us manage Trust Conservation Areas. Land Stewards adopt a property to monitor, remove invasive species and garbage, maintain trails, and engage with the public about the Trust. They help us maintain the lands we love to visit and are our eyes and ears in the field. We want to thank our Land Stewards for staying safe and connected during this time. Here is one example of what they have been up to.



Land Stewards on Guemes Island worked with other volunteers from the Island to help us with the Kelly's Point public access project, reducing the need for us to send staff across the ferry at this time. If you have recently visited Kelly's Point, you may have noticed the new viewpoint and bench that were made and

installed by Ian Woofenden, Tony Allison, Jimmy Lemieux, John Stratham, Ralph Mendershausen, Darla Gay and Sally Stapp. John Hoenselaar also made and donated a second bench, which has been placed at the entrance of the property. In September, we hope to add interpretive signs, a bike rack, and an entrance sign. To reduce travel to Guemes our volunteers have also helped maintain the Guemes Mountain trail. Thank you Guemes volunteers!

During this time, we have had a few Land Stewards step back from their role and **we want to thank them for their dedication to the Land Trust and the properties they stewarded.** Thank you to the following retiring Land Stewards!

- Dennis Dagley – *Butler Creek (2018-2020)*
- Tara McGown & Kevin Crozier – *Upper Skagit 1 (2017-2020)*
- Tamara Thomas & Tom Mayes – *Sumner Lake (2011-2020)*
- Elaina & Thyatira Thompson – *Kelly's Point (2018-2020)*

These last five months have allowed for reflection on our Land Steward program and how best to serve our volunteers. Looking ahead, it seems work parties are going to be fewer due to Covid and we will be relying on volunteers differently. **This is where our Land Steward Aide program comes in.**

Land Steward Aides help with specific projects on properties across the county. This is a great way to see lots of Conservation Areas without adopting just one. Focusing on projects instead of properties allows volunteers to help with activities they really enjoy doing. If you love removing ivy, we have a list of properties for you. If ivy is not your thing, but clearing around newly planted trees and shrubs is, we also have properties that need your help. These projects can be done independently or with members of your household while maintaining safe social distancing and mask wearing. With the help of Land Stewards and Aides we can get a lot done. Check our website for more information, and let us know if you are interested. [www.skagitlandtrust.org/pages/volunteer.aspx](http://www.skagitlandtrust.org/pages/volunteer.aspx).



### Heidi Nichols

Heidi Nichols, a long time Land Steward at Green Road Marsh passed away in November 2019. Heidi loved Green Road Marsh. She advocated strongly for its restoration and took part in many work parties and citizen science events there. Heidi developed the protocols for our amphibian monitoring program and coordinated volunteer forays for several years. Heidi was in the first class awarded four-year degrees in environmental conservation from Skagit Valley College and an early intern with the Trust. Heidi was a lovely person who really believed in conservation and worked hard to help the land and her community. She had a special warmth and great attitude. She is missed by many.



## Our Preservation Efforts Need a 'Pick-Up' Truck

Want to help out the Trust's Stewardship team, open up space in your driveway, and receive a possible tax deduction? **Skagit Land Trust is looking for a fieldwork vehicle in decent running condition** – it doesn't need to be the prettiest thing on the road as long as it's reliable and safe to drive! As we've acquired more properties, using our staff and volunteers' personal cars to cart equipment and plants to conservation areas and to haul off debris from site cleanups is getting more challenging.

What are we looking for?

- **A compact or full size truck** would be ideal, but a van or SUV with reasonably high ground clearance may work.
- We would like to be able to secure items in the vehicle overnight, and to transport dirty and / or potentially dangerous items (such as long T posts, rock bars, weedwhackers and pickaxes) safely. **Trucks with a lockable box or canopy would be great.**
- **We need safe seating for at least two people in the vehicle.** Though we aren't carpooling during the pandemic, when things return to normal we usually conduct stewardship in pairs for safety. Seating for up to four people would be wonderful, but isn't a necessity. Jump seats behind front seats in a truck would be just fine.
- **A vehicle with towing capability** would be particularly handy. We move a lot of equipment and plants to properties across Skagit County.

If you have a vehicle that sounds like a good fit which you'd like to donate, please send our Stewardship Director an email at [reginaw@skagitlandtrust.org](mailto:reginaw@skagitlandtrust.org). In-kind donations may be eligible for charitable gift deductions. Please check with your financial advisor.



*Clockwise starting top left: One volunteer with a truck borrowed a trailer from another volunteer for a large site cleanup. We filled the trailer and the back of the truck!*

*A volunteer lent a truck with towing capacity when we needed to rent a compressor to run a jackhammer. She was able to get the equipment to 4 different properties over a busy weekend.*



*Conservation Area Coordinator Hannah William's fairly roomy Subaru runs out of space for plants pretty fast! We won't even talk about the time we fit one hundred plants in Stewardship Director Regina's Honda Fit...*

*Lin Skavdahl, one of our fantastic Hurn Field land stewards, perfectly demonstrating how muddy we can get!*



## Families that quarantine together, steward together



In addition to our Land Stewards, staff and their family members have been out in the field. Hannah and her partner Garrett Knoll have been hacking blackberry and uprooting scotch broom at Hurn Field. Stacy and her husband, King Dahl, worked at Cumberland Creek to pull butterfly bush before it flowered. Regina was accompanied by her partner David Baer on numerous site visits and planting work at Cascade River South 2 and the Delachapelle Conservation Easement. Jane and her husband Paul Ingalls, and Michael and his partner Rachel Van Boven planted trees at Diobsud Creek. Martha and her husband, Tom McFall, removed invasive species and hung signs at Samish Flower Farm. While our Covid 19 volunteer protocols don't allow carpooling at this time, family members don't have that same restriction and we've been happy to bring an extra pair of hands along to the field.

## Samish Flower Farm Stewardship Update

This beautiful property was purchased in 2019 with your help. Since that time, we have been working on wildlife habitat restoration down by the shore and on the uplands. Over 100 volunteers and partners such as EarthCorps and Washington Conservation Corps have helped with this work. We took part in a WA Department of Ecology program, allowing conservation crew members to remove several truckloads of creosote logs from the beach. We tackled invasive species, installed over 3,450 native trees and shrubs in salt and freshwater wetlands, and "unwired the land" by removing over 2,000 feet of wire fencing. Volunteers helped us study the land and its birds and wildlife so that as we develop public access, we do so in a way that is compatible with them. The trail to the beach is open and we are delighted to see it used and cared for. Later this fall we will begin working to develop public access on the upper part of the property, including public parking. Stay tuned as there may be a trail work party you will want to join in 2021.



*Photos clockwise from upper left: blackberry had overgrown some parts of the property and was knocked back by mowing and manual removal; removing an old shed on the property; creosote logs were removed, as creosote is poisonous to pacific herrings, the prime food for our salmon which is the only food for our resident orcas; Fiddlehead Montessori school helped plant trees before exploring the marine shoreline; volunteers helping to remove blackberry and replant trees and native shrubs in the wetland areas of the property.*





## Leave It to Nature, Forever

Many members have reached out to the Trust over the past year to learn more about including Skagit Land Trust in their will, trust, or beneficiary designations. Leaving a legacy far beyond your lifetime is something we can often help you achieve. A planned gift, or legacy gift, covers all kinds of charitable gifts such as bequests of money or land in your will. **These gifts help conservation in the Skagit, forever.** These gifts can also help you address a variety of personal and financial goals. Please visit our website for information [www.skagitlandtrust.org/pages/plannedgiving.aspx](http://www.skagitlandtrust.org/pages/plannedgiving.aspx). We also have two informational handouts that you can request. Our 'Guide to Planned Giving' covers many types of legacy gifts. Our 'Land Conservation – Options for Landowners' covers different ways to leave a gift of land or a conservation easement. **Please contact Molly Doran at [mollyd@skagitlandtrust.org](mailto:mollyd@skagitlandtrust.org) to discuss your planned gift options.**



*John Tursi loved saving local lands. He left a bequest to help connect the Anacortes Community Forest Lands with Deception Pass State Park.*

# *'Lands We Love' Online Auction*

## *Sign Up Now!*

### *September 27 - October 3rd*

#### **'Lands We Love' Auction goes online for 2020 with livestream show October 3rd at 5:30pm**

We're excited to invite you to our 'Lands We Love' 2020 virtual auction. Our first ever completely online event will celebrate the power of our community to come together to conserve the lands and waters we all love.

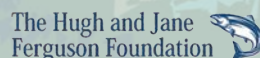
**Online auction bidding begins September 27th. The auction culminates in a special one-hour live YouTube presentation on October 3rd at 5:30pm.**

Executive Director Molly Doran and Board Member Therese Ogle will be joined by special guests to share exciting updates from the Trust, highlight the work we have done together, and auction off some fabulous items and experiences!

**Visit [www.skagitlandtrust.org](http://www.skagitlandtrust.org) to sign up for the auction and live YouTube presentation.**

Thank you to our sponsors for continuing to support this annual event!

#### Shoreline Level Sponsors



#### River Level Sponsors



#### Forest Level Sponsors

Eager Beaver Tree Service Inc \* Empirical Wealth Management \* Foothills Toyota  
Gary & Susan Brown \* Guardian Northwest Title & Escrow \* Lautenbach Industries  
Lisette Roozen-Mast & Michael Mast \* Lisser & Associates PLLC  
Skagit Law Group PLLC \* Skagit Regional Health \* WA Native Plant Society



## Thank you for all the ways you support land conservation here in the Skagit!

As a member of Skagit Land Trust you are protecting local waters, forests, and the wildlife that depend on these places for survival. When you volunteer at a Trust event, shop at a business that supports the Trust, and share our posts online, you are spreading the word about the great work we are doing together.

Donations also come to the Trust in a variety of forms and we are grateful for each of them. Below are a few popular alternative ways to make a gift to the Trust. A handout on alternative ways to give is also available by clicking on the 'Donate' button on our website. Please contact **Laura Hartner, laurah@skagitlandtrust.org**, for more information.



### Donate Stocks or Securities

Transferring appreciated stocks is one of the most powerful and tax-savvy ways to contribute to Skagit Land Trust. If you were to cash out your stocks and make a cash gift, you would have to pay capital gains taxes. However, **if you transfer the stocks directly to the Trust, you can avoid the tax, and deduct the full amount of your stock as a charitable donation on your tax return!** Donating stocks, bonds, and mutual funds can be an easy way to give to the Trust. Many of our supporters choose to take advantage of this smart way to give. Please contact the Trust for forms you can give your broker.



### Make a QCD from your IRA

If you are 70 1/2, you can make a **qualified charitable distribution (QCD) from your IRA account** directly to the Trust without that gift counting as "income". Studies show that gifting directly from your IRA is one of the most tax beneficial ways of giving to charity. While donations can't be claimed as a charitable deduction, donors can realize substantial benefits by reducing their taxable income. You can make a one-time QCD gift, set up a recurring gift through your QCD, or designate the Trust as a beneficiary of your IRA.



### Maximize your Membership Impact – as a Skagit Sustainer

**Skagit Sustainers give automatic monthly or quarterly donations** rather than making one annual membership contribution. This minimizes our mailing costs and paper use, which allows us to do even more with your dollar. Knowing a steady source of revenue will be coming in helps us stretch. We can put a down payment on a property, increase the stewardship projects we take on in the next year, and continue to find ways to get the community involved in Citizen Science monitoring programs. **Please contact Martha at 360-428-7878 or marthaf@skagitlandtrust.org for more information.**

Being a Skagit Sustainer can be easier on your budget, and you don't have to wonder if your membership is current. It always is! Your automatic payments continue until you decide to stop them.

Here are four easy ways to be a Skagit Sustainer:

- \*Direct Transfer from your checking account to ours can be set up by clicking the Donate Now button on the top of the page at skagitlandtrust.org. Use the "echeck" option instead of "credit card".
- \*A bank issued check can be set up from your bank and automatically mailed to us each month/quarter.
- \*A credit card payment can be set up online at skagitlandtrust.org. You can also opt to pay the credit card fee, which really maximizes your donation.
- \*If you work for a larger company that offers an Employee Matching Gifts Program, you can make a recurring automatic gift through your employer- who transfers the funds to us- and may match your gift up to 100%.



## Those We've Lost (2019-2020)

In the past year we have lost some foundational members of Skagit Land Trust. We miss these members and honor them for helping to leave a natural legacy in the Skagit. Pictured below from left to right, Conservation Easement donor, Win Anderson; Business Supporter, Cheryl Bishop; Samish Island Conservation Legacy donor, Jean Heflin; Cedar Legacy member, Betty Miles; long time member George Newbury; Volunteer Land Steward, Heidi Nichols; Guemes Mountain supporter, Thelma Palmer; Guemes Mountain Steering Committee member, Anne Passarelli.

Not pictured are Winifred Bradford, Robert Dionne, Jim Dugan, Bob Englund, Judy Granstrom, Jackie Haddon-Bohn, Leon Leonovich, Howard McDonald, Susan Miller, Gene Mizell, Judi Munn, Robert Personius, Jeffrey Radke, George Rolfe, Kathi Rotunda, Al Seitz, Jerry Sommerseth, Sherm Stanard, Tom Winn, Betty Wright. They are remembered.



## In Honor and Memorial Gifts (Dates)

**In memory of Diane Altwein**  
Ramona Hammerly

**In honor of Bud Anderson**  
Jerry and Marilyn Eisner

**In memory of Win Anderson**  
Amy Gilbrough  
Steve and Robyn Johnson

**In memory of Tom Andrak**  
M J Andrak

**In honor of Howard Armstrong**  
Dave and Nancy Gillespie

**In honor of Eric Bell**  
Liz Wilhelm

**In memory of Ric Boge**  
Janet Boge

**In honor of Carly Boyd**  
Nicholle Petersen

**In memory of Margaret Sanderson Bradshaw**  
Lucy Bradshaw

**In honor of Jim and Victoria Brown**  
John and Linda Hunt

**In honor of Kurt & Janice Buchanan**  
Patt and Neil Jorgensen

**In memory of LaVon & George Bucher**  
Nadene Frazier-Westphall

**In honor of Bugsy the brave little Lhasa Apso**  
Lisa Wright

**In memory of Elizabeth Burdock**  
Joseph Burdock

**In memory of Susan Butler**  
Dennis and Lori Pollett

**In honor of the marriage of Matt & Mira Castle**  
Paul Dinnell and Vicki McNeil

**In memory of Lois and Cleve Chase**  
Rebecca Cannon

**In memory of Doris Cohan**  
Molly Cohan

**In honor of The Corbett Family**  
Nancy Kassabaum

**In honor of Walt Crowe**  
Carol Steffy

**In honor of Norm Culbert**  
Laurette Culbert

**In honor of Tanya Culbert**  
Laurette Culbert

**In honor of Carrie Dalton**  
Kelly Bush and Russ Dalton

**In memory of Edith Christiansen Dalton**  
Kelly Bush and Russ Dalton

**In memory of Bruce Daniel**  
Marcia M Daniel  
Malcolm Daniel and Darryl Morrison

**In honor of Molly Doran**  
Father Paul Magnano

**In honor of Ann Dursch**  
Jane Brandt

**In memory of Lee Emory**  
Austin Rice

**In memory of Ben & Lois Englebright**  
TJ Stevens and Todd Rubano  
Skip Stevens  
Larry and Alba Stevens  
Annette Woolsey and Jim Shiflett

**In memory of James Ford**  
Jim and Joyce Anderson

**In honor of Pope Francis**  
Father Paul Magnano

**In honor of David Freiberger**  
Danielle Freiberger

**In honor of Frontline Workers In Skagit County**  
Susan Wilson and Eric Hall

**In honor of Aaron**  
Carolyn and Ed Gastellum

**In honor of Ethan and Elizabeth Goldberg**  
John and Linda Hunt

**In memory of Gene Graves Mizell & Joan Graves Vanderhoof**  
Barbara Lemanski  
Andrew and Marie Vanderhoof

**In honor of Anita Meyer & Josh Greenberg**  
Rick and Tracey Levine

**In memory of R.C. Grundy**  
Staff of Skagit Wild Bird Supply Staff

**In honor of Asher & Shyla Hallingstad**  
Vicki and Chuck Hallingstad

**In honor of Kit and Carol Harma**  
Miriam Lambert

**In memory of Jean Heflin**  
Ann Reid and Tom Theisen

**In memory of Ralph Heft**  
Lisa Nissley



**In honor of Marcia Hunt and Steve Hulsej**  
James Hunt  
Martha Wilson

**In honor of John and Linda Hunt**  
James Hunt  
Nathan Moore and Carrie Zerjav  
Martha Wilson

**In memory of Claire Ingels**  
Randall Ingels

**In memory of Clayton James**  
Dedy Ward and Susan Parke

**In memory of Roger Johnson**  
Brenda Cunningham and Tim Manns  
Jean Defond

**In Memory of Paul Johnson**  
Kim Kusick

**In honor of Nikhil Joshi**  
Helen Jones

**In memory of Harold W. Kimble**  
Phil and Susan McCloud

**In memory of Janet Knowles**  
David and Joanne Witiak

**In honor of Rusty Kuntze**  
Ted and Carol Hegg

**In memory of Roland Matthews**  
Linda Ballantine

**In memory of Judy McHarg**  
Sid McHarg

**In honor of Paul Rosasco & Winnie McNamara**  
Louise Garwood

**In honor of Krissy Miller, Darren,  
Torin Kavanagh**  
Fred Miller

**In memory of Abby Miller Busche**  
Fred Miller

**In honor of Mother Earth**  
Julie Davis  
Garden Mentors

**In memory of Gene Murphy**  
Ginny Murphy

**In memory of Mary Nack**  
Dunja Lingwood

**In memory of Heidi Nichols**  
Kelly Bush and Russ Dalton

**In memory of Gary Park**  
Ronald Dow

**In memory of Muriel K. Park**  
Susan Gwost

**In memory of Anne Passarelli**  
Donald Passarelli

**In memory of Esther Pearson**  
Sina Pearson

**In memory of Hazel Pilkington**  
Richard and Carol Treston

**In memory of Nathan Rawhouser**  
Ashley Rawhouser

**In memory of Kit Rawson**  
Kathy Thornburgh  
Karen and Jim Vedder

**In honor of Lenore Robb**  
Patrick Gartland

**In honor of Donald Rooks**  
Hal and Susan Rooks

**In memory of Kathi Rotunda**  
Karla and Steve Garey

**In Memory of Robert Schaedler UDT 36 Team 1**  
Jean Hawkins

**In honor of Randy & Barbara Schnabel**  
Gary and Kari Garrett

**In memory of Rudy & Emma Silva**  
Roger Fuller and Mary Silva

**In memory of Rollo Sligar**  
Christine Lavra

**In honor of the effective work of SLT**  
Robert Gillespie

**In honor of Jerry Sommerseth**  
Frances Ambrose and Steve Hunter

**In memory of Mary A. Stapp &  
Sylvia Stapp Carothers**  
Susan and Patrick O'Donnell

**In memory of Margaret "Chickie" Stewart**  
Anne Murphy

**In memory of Daniel Oliver Stewart**  
Daniel and Louise Stewart

**In honor of the Swan Road Neighborhood**  
Walter and Cathy Pfahl

**In memory of June Thomas**  
Cecil Thomas

**In memory of Dawn Wells & Sandra  
Tidington**  
Fred Miller

**In memory of Richard & Erik  
Tjersland**  
Shirley Tjersland

**In memory of Mr. Dallas Trople**  
Kylianne Colwell

**In honor of Keith & Jan Wiggers**  
Kathy Green  
Dr. Robert and Judith Higgins  
Herb and Christine Sargo

**In honor of Ben & Sloane Winkes**  
Alan Breen  
Mary Winkes

**In honor of Gus Winkes & Ria Berns**  
Alan Breen  
Gus Winkes  
Mary Winkes

**In honor of Ken and Anne Winkes**  
Alan Breen  
Mary Winkes

**In memory of Tom Winn**  
Jack and Grace Hubbard

**In honor of Diana Wisen**  
Catharine Links

**In memory of Thomas C. Yaun**  
Gregory and Carol Springs

**In memory of Matt Zillig**  
Gloria Zillig

## Business Supporters

5b's Bakery  
A Town Bistro  
Adaptive Law Firm PS  
Adrift Hospitality  
Adrift Restaurant  
Africa Mama  
Allstate Insurance  
Anacortes Brewery  
Anacortes Cinemas  
Anacortes Diving  
Anacortes Kayak Tours  
Anacortes Oil & Vinegar  
Anelia's Kitchen and Stage  
Anne Martin McCool Gallery  
Anthony's Restaurants  
Arne Svendsen Trucking  
Azusa Farm and Garden  
Bank of the Pacific  
Banner Bank  
Bare Boutique  
Beneath The Streets  
BIKESPOT  
Birdsview Brewing Company  
Bitters Company  
Black Magic Bakery  
Black Sheep  
Blue Heron Coffee  
Bob's Chowder Bar & BBQ Salmon  
Bow Hill Blueberries  
Breadfarm  
Brown Lantern Alehouse  
Brown-Lindquist Group  
Budget Towing and Auto Repair  
Burgermaster  
Calico Cupboard- Anacortes  
Callison RTKL Seattle  
Caravan Gallery  
Carpenter Creek Farm  
Cedar Country Lumber  
Charlton Glassworks  
Christianson's Nursery, LTD

Chuckanut Brewery  
Chuckanut Manor Seafood and Grill  
Cline Consulting, LLC  
Coastal Farm and Ranch  
COHO Liquidation  
Coldwell Banker Bain, Don Elliott  
Commonwealth Financial Network, Jody Lease AIF  
Compass Wines  
Cottons  
Craft Stove  
Dad's Diner  
Dakota Art Store  
Disneyland Resort  
Dukes Seafood  
Dumas Station Winery  
E and E Lumber, Inc  
Eager Beaver Tree Service Inc  
Eaglemont Golf  
Easton's Books  
ElSage Designs  
Empirical Wealth Management  
Everett Aqua Sox  
Fairhaven Runners & Walkers  
Fairmont Olympic Hotel  
Farmstrong Brewing Co.  
Fidalgo Artisan Yarn Company  
Fidalgo Bay Resort  
Fidalgo Fly Fishers  
Fine Feathered Friends  
Foothills Auto Center Toyota  
Forte Artisan Chocolates  
Frida's Gourmet Mexico  
Garden Mentors  
Gato Verde Adventure Sailing  
Gere-a-Deli, Laurie Gere  
Glenda Alm and Richard Kent  
Guardian Northwest Title & Escrow  
Guemes Island Resort  
Hair & Body Mechanix  
Hedgerow  
Helclin Farms

Heliotrope Hotel  
Hellams Vineyard  
Holland America Line  
Island Express Charters  
I've Got An Etch  
J P Automotive  
Janicki Industries  
Jet Blue  
Joe's Gardens Inc  
John L Scott - Anacortes  
Jo's Healing Hands  
Kaptein's Ace Hardware  
Karl's Paints  
Kelley's BBQ  
King Arthur Flour  
Klepper Glass  
La Conner Pub & Eatery  
Land Title and Escrow Co  
Lang's Pony Farm  
Lautenbach Industries  
Lefeber Turf Farm  
Lichenology  
Lisser and Associates PLLC  
Lithtex NW  
Lost In The Groove  
Majestic Inn and Spa  
Make It Matter  
Mariposa  
Mary Davis Lighting  
Microsoft Matching  
Midway House Antiques  
Mimnaugh Excavation LLC  
MOD Pizza  
Mud Bay  
Native Springs  
Noah Booker, Shelterbelt LLC  
North Sound Brewing  
Northwest Fine Furnishing  
Northwest Real Estate Valuation  
PAVE Jewelry & Design Studio  
Pelindaba Lavender

Penguin Coffee  
Perennial Pleasures  
Philip Buri  
Pickford Cinema  
Powell Studios  
Rachawadee Thai Cafe  
Razzi's Pizzeria  
Recchiuti Confections  
Samish Bay Cheese  
Samish Island Cards  
Santo Coyote  
Sauk Mountain Pottery  
Schuh Farms  
Scott Milo Gallery  
SeaBear Smokehouse  
Seaport Books  
Seattle Mariners  
Semiahmoo Resort  
Sheely's Floral and Gift  
Silver Reef Casino  
Skagit Crest Vineyard & Winery  
Skagit Cycle Center  
Skagit Gardens  
Skagit Guided Adventures  
Skagit Law Group PLLC  
Skagit Regional Health  
Skagit River Brewery  
Skagit River Steel and Recycling  
Skagit Skate  
Skagit Valley Gardens  
Skagit Valley Healing Arts  
Skagit Valley Herald  
Skagit Wild Bird Supply  
Skal Beer Hall  
Smith and Vallee  
Soaring Swallow Woodworks  
State Farm Insurance  
Step Outside Shoes and Accessories  
Still Life With Cat Studio  
Stowe's Shoes and Clothing  
Stratum Group



Strauss Jewelers  
 Sunland Bark & Topsoil  
 Supterivs Hoteli Waterman Resorts  
 Swinomish Casino and Lodge  
 Terre-Source LLC  
 Terramar Brewing  
 Terry MacDonald Art  
 Theatre Arts Guild  
 The Cottage Salon  
 The Farmhouse Restaurant  
 The Marcus Whitman Hotel  
 The Scone Lady Bakery  
 The Scott Collection  
 The Stall  
 The Touring Co Wine Tours  
 The Wood Merchant  
 Tides Of Anacortes  
 Total Wine & More  
 Tracy Powell  
 Train Wreck Bar and Grill  
 Tri Dee Arts  
 Tweets  
 Twin Herons  
 Washington Bulb Corp  
 Watermark Book Co

Wiggin's Nursery Co  
 Wild Fibers  
 William Bounds Custom Framing  
 Winthrop Mtn View Chalets  
 Woodhouse Wine Estates  
 Work Outfitters  
 Young's Wood Art  
 Your Golden Rose Healing  
 Zeeks Pizza

**Grants, Foundation, & Nonprofits**

ACT Theatre  
 Campfire Samish  
 Children's Museum Of Skagit County  
 Chimpanzee Sanctuary Northwest  
 EarthCorps  
 Farm Services Agency  
 Friends of the Forest  
 Heritage Flight Museum  
 Horizons Foundation  
 Lincoln Theatre  
 META Performing Arts  
 Mount Baker Theatre  
 Museum Of History & Industry  
 National Estuary Program

National Coastal Wetlands Conservation Grants  
 Nordic Museum  
 North America Wetlands Conservation Act  
 North Cascades Conservation Council  
 North Cascades Institute  
 Northwest Straits Foundation  
 Pacific Northwest Ballet  
 Puget Sound Energy Foundation  
 Samish Indian Nation  
 Satterberg Foundation  
 Seattle Aquarium  
 Seattle Arts & Lectures  
 Seattle City Light  
 Seattle Symphony  
 Shasserre Family Fund  
 Shell Puget Sound Refinery  
 Skagit Audubon Society  
 Skagit Bicycle Club  
 Skagit Conservation District  
 Skagit County Historical Society  
 Skagit Valley Food Co-op  
 Skagit County  
 Spark Museum Of Electrical Invention  
 Taproot Theatre Company  
 Temcov Foundation

The 5th Avenue Theatre  
 The Burning Foundation  
 The Hugh and Jane Ferguson Foundation  
 The Methow Conservancy  
 The Museum Of Flight  
 The Nature Conservancy  
 The Peach Foundation  
 The Skagit River Poetry Foundation  
 Tulalip Tribes Charitable Contributions  
 WA Estuary and Salmon Restoration Program  
 WA Native Plant Society  
 WA Native Plant Society, Salal Chapter  
 WA Recreation and Conservation Office  
 Woodland Park Zoo

**Employee Matching Gifts**

Bill and Melinda Gates Foundation  
 Boeing Gift Matching Program  
 Costco  
 General Mills Employee Match Program  
 Liberty Mutual  
 Shell Oil Company Foundation  
 Tableau Foundation Matching Gifts

**Individual Members**

*Every effort was made to ensure all members are listed correctly. If you discover any errors, please accept our apologies and contact us so that we can make a correction.*

Joanne Abelson and Chris Goelz  
 Kris Abshire  
 Ruth Adamitz  
 Brian Adams and Kecia Fox  
 David Adams and Greta Movassaghi  
 Don and Sue Adams  
 Evelyn Adams  
 Robert Adler and Ruth Bachrach  
 Karen Lamphere and Timothy Alaniz  
 Kathleen and Thor Albro  
 Kathryn Alexandra  
 Eric Allan  
 Gail Allen  
 Jeffrey and Linda May Allen  
 Daniel Allison  
 Nancy Fox and Nick Allison  
 Glenda Alm and Richard Kent  
 Miriam Amos Nihart  
 Katherine Anagnostou  
 Elaine Anderson  
 Jim and Joyce Anderson  
 Raechel Anderson  
 Robert Anderson  
 Mud Bay, Justin Anderson  
 Kent Turner and Ellen Anderson  
 MJ Andrak  
 Roberta Apel  
 Aubrey Aramaki  
 Howard and Thais Armstrong  
 Maryann Atkins  
 M Audette  
 Mark and Ruth Backlund  
 Mark and Karen Backman  
 Elizabeth Sheppard & William D. Badgeley  
 Janet Bailey  
 Jenny Baker  
 Judy Baker  
 Charles Schultz and Terri Bakke-Schultz  
 Caroline and Brian Baldie  
 Richard Baldwin  
 Linda Ballantine  
 Eric and Amanda Baltazar  
 Judy and Peter Bangs  
 Barbara Banks  
 Marjie Barden and Ed Hill  
 Chris and Jennifer Barker  
 Phoebe Barnard and John Bowey  
 Dennis and Chris Barnes  
 Anne and Bob Barry  
 Liz and Michael Bart  
 Stuart Barudin  
 Beth Basabe

Anne Basye  
 Helen Baumgartner  
 Paul Beaudet and David Wertheimer  
 Diane Bednarz and Peter Jepson  
 Lynn Beebe  
 Thomas and Nola Beeler  
 Allison Beezer  
 Ken Berg and Jan Weydemeyer  
 Al and Sue Berger  
 Richard Bergner  
 Joline and Frank Bettendorf  
 Coizie and Dicken Bettinger  
 Marjorie Bickel  
 Jane Billinghamurst and Thomas Lebovsky  
 Jim and Jean Birdsall  
 Cheryl Bishop  
 Greg and Sue Bishop  
 Cindy Bjorklund  
 Franklin E Bjorseth  
 Claude and Annie Blackburn  
 Deborah Blackstone and Ursula Class  
 Ellen Blair  
 Cathryn and Graeme Blake  
 Rich and Feryll Blanc  
 Gary and Heidi Bletsch  
 Robert and Marie Blits  
 Elizabeth Blosten and Tom Linder  
 Steven and Kathryn Bluhm  
 Loren and Teresa Bogart  
 Janet Boge  
 Kari Boge  
 John and Gail Boggs  
 Tim and Liz Bohlin  
 Bill Hlavacek and Gail Bohnhoff-Hlavacek  
 Jane Wagner and Bruce Bollert  
 Glenn and Teddie Bordner  
 Jackie Boss  
 Bob and Nina Boudinot  
 Jennifer Bowman  
 Jon and Ann Bowman  
 Judy Bown  
 John and Kristen Boyes  
 Anne Braaten  
 Dorothy Bradshaw  
 Lucy Bradshaw  
 Jane Brandt  
 Dan and Donna Brauer  
 Kalman Brauner and Amy Carlson  
 Phyllis Bravinder  
 Martha Bray and John Day  
 Alan Breen  
 Peggy Bridgman

Rose and John Brierley  
 Walter Brodie and Linda Versage  
 Anne Schwartz and Mike Brondi  
 Jodi Broughton  
 Paul and Mary Brower  
 Gary and Susan Brown  
 Linda and Steve Brown  
 Lloyd and Wendy Brown  
 Susan Brown  
 Tina Brown  
 Cath Brunner & Eric Riedel  
 Janice and Kurt Buchanan  
 John Buchanan  
 Marc Coltrera and Anne Buchinski  
 William and Elisabeth Buchman  
 Karen Bunney  
 Robert Burden  
 Joseph Burdock  
 Elizabeth Burrows  
 Ferdi Businger  
 Joost A. Businger and Marianne Kooiman  
 Richard Butler  
 Suzanne Butler  
 Coleman Byrnes  
 Ann and Carl Cady  
 Laura Cailloux  
 Cynthia Call  
 Rebecca Cannon  
 Bob Carey and Kari Odden  
 Beth Carlyle-Askew  
 BJ Carol  
 Amy Carson  
 Katherine Carson  
 Janan and Alan Carter  
 Sarahi Casas-Castorena  
 Jeff Brown and Margaret Catzen-Brown  
 Michael Cerbone  
 Mark and Penny Chapman  
 Anne Stapleton  
 Ann Childs and Stephen Thornton  
 Norma Miller and Erik Christianson  
 Jim Ciecko and Joanne Myers-Ciecko  
 Robert and Shirley Clark  
 Dionne and Richard Clasen  
 Esther Luttkhuizen and Brad Claypool  
 Tom, Beth and Christine Cleland  
 Eileen Coan and Ross McConahey  
 Robert Coffey and Deborah North  
 Molly Cohan  
 Morty Cohen and Kathryn Cavil  
 Alice Collingwood  
 Tim and Kirsten Colton

Amy and Scott Colvin  
 Kylianne Colwell  
 Pat Milliren and Alan Comulada  
 Ryan Cook  
 Debbie and Darrell Cornelius  
 Jaye Cory  
 Susan Cottrell  
 Barbara Courtney  
 Allen Craney  
 Mike and Dianne Crawford  
 Janet Cray  
 Susan and Gordon Crippen  
 Joan Cross  
 Ada Crowl and Patrick Snyder  
 Laurette Culbert  
 Terry Purdy and Melinda Cumming  
 Naomi and Robert Cummings  
 Hannah Currie  
 Jocelyn Curry  
 Lee and Mary Sue Dallas  
 Kelly Bush and Russ Dalton  
 Malcolm Daniel and Darryl Morrison  
 Marcia Daniel  
 Nora Daniel  
 Larry D'Arienzo  
 Virginia Darvill  
 Doug Davidson & Lynne Wenberg-Davidson  
 Jan Davis  
 Julie Davis  
 Karen and Richard Davis  
 Homer and Rosette Dawson  
 Nancy and Stephen Dean  
 Daniel and Charlotte Decker  
 Pat and Dick deLaChapelle  
 Gene and Marilyn Derig  
 Karen Desko and Beth Strack  
 Bobbi and Thomas Deutsch  
 Alice and Pete Dewell  
 Jean Defond  
 Mary and Robert Dickinson  
 Jill Dickson  
 Bill and Holly Dietrich  
 Paul Dinnel and Vicki McNeil  
 Lani and Michael Dodge  
 Lani Donohoe and Tom Griffin  
 Martha and Jim Donovan  
 Molly Doran and Andrew Cline  
 William Dougall  
 Ronald Dow  
 Robert Raymond and Dorothy Downes  
 Maggie and George Downing  
 Alec Downs  
 Fonda and Ron Downs



## Individual Members cont.

Julie Drake  
Judith Dudley and Tom Slocum  
David and Clara Duff  
William Dunlap and Ellen Rak  
Ann Dursch  
Larry and Molly Dutton  
Suzanna Dworsky  
Michael and Katherine Earley  
Samish Indian Nation, Leslie Eastwood  
James Eberhardt  
Ralph Edfeldt and Bonnie Steussy  
John Edison  
Craig and Noma Edwards  
Susan Ehler  
Diane Eiesland  
Mark Eikeland  
Jerry and Marilyn Eisner  
Carol and Jon Engels  
Klaudia Englund  
Walt Engust  
Debbie Ensey  
Bill and Susanna Epler  
John and Marie Erbstoeszer  
Sarah Eskenazi  
Marc and Pam Estvold  
Betty Evans  
Karen and William Everett  
Doug and Cheryl Everhart  
Marilyn Faber  
Judy Farrar and Eric Knudsen  
Christine Farrow  
Kathleen Faulkner  
Doug Mills and Beverly Faxton  
Robert Feist  
Ron Feld and Lorna Klemanski  
Corwin Fergus  
Decky Fiedler and Roland Barach  
Gloria and H.F. Fish  
Cissy Fisher and Rish Pavelec  
Judy Fisher  
Bette Fitzgerald  
Thomas and Kathleen Flanagan  
Kevin and Rebecca Fletcher-Tighe  
Glyn and Linda Fleury  
Larry and Susan Forsythe  
Marcia Fort  
Alix Foster and Rick Shorten  
Art and Robyn Fournier  
Robert Frazier  
Nadene Frazier-Westphall  
Alex Free  
John Freeman  
Bill and Arlene French  
Denise Friend  
James Fukuyama  
Cathy Funk  
Joe and Terri Gaffney  
Michael Garbooshian  
Ken and Joan Gard  
Karen Gardiner and Philip Brown  
Karla and Steve Garey  
Gary and Kari Garrett  
Patrick Gartland  
Louise Garwood  
Carolyn and Ed Gastellum  
Robert and Ellen Gattton  
Warren Gilbert  
Amy Gilbrough  
Linda Giles  
Dave and Nancy Gillespie  
Robert Gillespie  
Tim and Susan Gilmore  
Charles Givens  
James and Paula Glackin  
Kay Glade  
Tom Glade and Brenda Lavender  
Tom and Carol Godwin  
Joanne Abelson and Chris Goelz  
Peter Goldfarb  
Herb and Theresa Goldston  
Patsy Good  
Kristine and Roger Goodan  
Gerald Tuttle and Kathleen Gorham  
Jonathan and Heather Granger  
Tom Kress and Anita Gras Bryant  
H. Albert Green

Kathy Green  
Krsti Greenfield  
Sooze and Ben Grossman  
Guy Gulacsik  
Gerri and John Gunn  
Susan Gwost  
Richard Gwozdz and Katrina Hanna  
Pete Haase  
Sheila Haegele  
Mary Parker-Hale and Jeffrey Hale  
David and Catherine Hall  
David and Deborah Hall  
Patty and Uli Haller  
Vicki and Chuck Hallingstad  
Janet Hamilton  
Ramona Hammerly  
Ernie and Joan Handelman  
Daniel and Marilyn Hanesworth  
Fran Hansen  
Fred and Ellen Hanson  
Jana and James Hanson  
Mark and Rita Harbaugh  
Mary Mae Hardt and Scott Andrews  
Carol and Kit Harma  
Steph Harmon  
Merrilee Harrell  
Louise Harris  
John Smith and Cheryl Harrison  
Karen Lewis-Hart and Derek Hart  
"Perennial Pleasures,  
George Thelen & Linda Hart"  
Deryl Hart and Pascale Michel  
Laura Hartner and Scott Weatherly  
Jack and Susannah Hartt  
Lenora Hass  
Rose Hatfield  
Dyvon Havens  
Jean Hawkins  
Mary Moser and Mike Hayes  
Bill Hayton and Laurence McCulloch  
Lief and Monica Hazelet  
Bill Hebnner and Lora Leschner  
Larry and Josie Hedgpeh  
Peter Heffelfinger  
Ruth Heft  
Ted and Carol Hegg  
Darwin Helmuth  
Helen Heneks  
Kate Tibbetts and Gary Henry  
Jay Ham and Jan Hersey  
Craig and Emily Hetherington  
Jenny Heutmaker  
Sara Hiemstra  
Robert and Judith Higgins  
Emory Hill  
John and Nancy Hinton  
Mark and Alison Hitchcock  
Amy Hockaday  
Fred Hodge  
Glen Hoff  
Shirley Hoh  
Mary Ruth and Phillip Holder  
Joyce Hollywood  
Cherie and Howard Holman  
Doris Holmes  
Bill Hood  
David Hoofnagle  
Kathleen and Nelson Hoose  
Bill and Sharyn Hopley  
Steve and Gail Hopley  
Margaret Horak  
Patti Sutter and Jim Houston  
Sharon Howard  
Chuck Howell and Charlene Day  
Pam and James Hoyle  
Jack and Grace Hubbard  
Kathy Huckleberry and Mike Burr  
Gene and Bette Huff  
Jane Vincent and Erik Hulsey  
James Hunt  
John and Linda Hunt  
Susan Hunt  
Frances Ambrose and Steve Hunter  
Julia and John Hurd  
Nancy and Jerry Husted

Pattie Hutchins  
Tim Hyatt  
Randall Ingels  
Margarete and John Insull  
Jim and Jan Irwin  
Elizabeth A. and Michael Jackets  
Sego Jackson and Raven Jirakovic  
Nelle Jacobson  
Steven and Dian Jahn  
Beverly and Richard James  
George Jay  
Chip and Laurie Jenkins  
Edward and Valerie Jensen  
Bob Jepperson  
Ryan and Christina Jepperson  
Jim and Mary Jessen  
Georgia Johnson  
Gina Johnson  
Jim Johnson and Marilyn Kenney  
Kirk Johnson and Lori Nordgulen  
Martin and Anita Johnson  
Ron and Susan Johnson  
Sharon Johnson  
Stephen and Nancy Johnson  
Steve and Robyn Johnson  
Thomas and Lane Johnson  
Helen Jones  
Gordon and Barbara Jonsen  
Lynne Jordan and Dennis Clark  
Martha Jordan  
Patt and Neil Jorgensen  
Kevin and Diana Judson  
Judy Gamble and Todd Wood  
Clint Kahler  
Zak Kalles  
Diane Kaplan  
Patricia Karlberg  
Nancy Kassabaum  
Diane Kelso  
Wendy and Hugh Kendrick  
Matt and Bonnie Kerschbaum  
Terry Ketcham  
Nina and Jeff Kidd  
Marjorie Kilbreath and Dean Townsend  
Kim Kusick  
Phil Kincare  
Hallie Kintner  
Lori Kirsis  
Barbara and Gene Kiver  
Greg and Marlene Kleven  
Beth Kraig and Suzanne Klinger  
Joan Knowles and Howard Dawson  
Bob Knowles  
Kristine Knutson  
Dick and Doris Kohler  
Rae Kozloff  
Eric and Laura Kraig  
Beth Kraig and Suzanne Klinger  
Jan Kramer  
Bobbi Krebs-McMullen  
Shelby Kremenich  
Tom Kress and Anita Gras Bryant  
Linda and Steve Krippner  
Karen Krub  
Robyn Kruse  
Kathy Kuba  
Von and Elizabeth Kuehn  
Jim Kuhn and Claudia Ross-Kuhn  
Anne and Bob Kuntz  
Rusty Kuntze and Libby Mills  
Konrad and Herta Kurp  
Christina and Michael Kurtz  
Trevor and Delberta Kyle  
Frank Lacey and Jeroldine Hallberg  
Jere LaFollette and Wende Sandersson  
Miriam Lambert  
Doug Lane and Michele Hamilton-Lane  
Bruce Rooney and Sandra Lane  
BJ Larson and Mary Gannon  
Robin LaRue  
Mary and Mark Lascelles  
Jim and Margie Lauer  
Christine Lavra  
Mike and Tammy Lawler  
George Lawson  
Marcia Lazoff

George LeBlanc  
Harriet Leclair  
Hella and Harold Lee  
John Lee  
Sandra Tassel and Craig Lee  
Rick and Tracey Levine  
Karen Lewis-Hart and Derek Hart  
Konrad Liegel and Karen Atkins  
Bruce Lindsay  
Ron Lindsay and Theresa Connolly  
Dunja Lingwood  
Catharine Links  
Craig and Anita Little  
William Lloyd  
Barbara Lopuszynski  
Deron Lord  
Doug and Laurie Lundgren  
Kippi Lundgren  
Mark and Teru Lundsten  
David and Deborah Lycette  
Robert and Susan Lynch  
Keith Lynd  
Pat and Mary Lyons  
Edith MacDonald  
Beau MacGregor and Ryan Castle  
Mac and Linda MacGregor  
Meredith and Rick Machin  
Mac Madenwald and Wendy Gray  
Maria Magana  
Keith and Joan Magee  
Ann Magnano and Sheri Boddy  
Father Paul Magnano  
Donald and Mary Magness  
Scott Magorien and Susan Hayton  
Magorien  
Glen and Kathryn Mahan  
Mary Maloney  
Michael and Suellen Mancer  
Tim Manns and Brenda Cunningham  
Michael Marques  
Ros Bond and Jill Marsden  
Daniel Martin and Patsy Botsford-Martin  
Janice Martin and Doug Robinson  
Teak and Anne Martin  
Lisette Roozen-Mast and Michael Mast  
Paul and Patty Mattausch-Johnson  
Penelope Matthews  
Jeff and Ann May  
Renata and Darren Maybruck  
John McCallum  
Bill and Dana McCarthy  
Carolyn McCarthy and Kent Chasson  
Gail and Michael McCormick  
Alec and Sandy McDougall  
Samantha McDougale  
Martha Frankel and Tom McCall  
William and Diana McGaw  
Tara McGown and Kevin Crozier  
Cynthia McGuiness  
Sid McHarg  
Nan McKay  
Phyllis McKee  
Phyllis and Donald McKeehen  
Janet McKinney  
Phil and Susan McCloud  
Skagit Bicycle Club, Phil McCloud  
Ruth McNally  
Paul Rosasco and Winni McNamara  
Dick and Bettie McNeely  
Liz McNett Crowl and Todd McNett  
Robert and Helen McPeak  
Lisa and Daniel McShane  
George and Jodi Meekins  
Sue Mehler  
Robert and Barbara Meier  
Richard Mellon  
Ralph Mendershausen  
Scott Mennella and Anne Sidbury  
Roger and Mary Ann Mercer  
Fred Meyer  
Anne and Jack Middleton  
Judy and Gordi Middleton  
Fred F. Miller  
Curtis Miller and Shirley Solomon  
Linda Miller  
Mark and Alison Miller



Timothy Miller and Heidi Zeretzke  
Lynda Mills  
Darlene Mindrum  
Kris Ekstrand Molesworth and Carl Molesworth  
Marlene and Jim Moore  
Michael and Roberta Moore  
Carrie Zerjav and Nathan Moore  
Janet Morgan  
Jazz Morgan  
Brent Morrison  
Jenni and Ken Morrison  
David Moser  
Bev and Jim Mowrer  
Joseph Mulcahy and Anthony Young  
Mick Cowles and Patty Munday  
Judi Munn  
Anne Murphy  
Ginny Murphy  
Pamela Murphy  
Kathy and Mike Murray  
Jeff Muse  
Lynne Myall  
Richard and Gina Myers  
Mardi Solomon and Gene Myers  
John Narver  
Ann Naymie  
Karen Nelson  
Robert and Catherine Nelson  
David Nesvold and Amanda Kowalsky  
Margaret Neudorfer  
Edward K. Newbold  
Mary Jo Newbury  
Mark Nihart  
Mark and Miriam Nihart  
Lisa Nissley  
Tom Strawman and Janet Nuetzmann  
Kenneth Oates  
Kristjan and Monica Ochs  
Joan O'Connell & Stephen LeCuyer  
Jeanne O'Connor  
Susan and Patrick O'Donnell  
Therese Ogle  
Charles and Elizabeth O'Hara  
David and Sydney Olausen  
Darcia Olsen  
Judy and David Olson  
Randi and Neal Olson  
Susan O'Neil and David Gorton  
Cathy Orlins and Clark Grasher  
Virginia and Stephen Orsini  
Leo Osborne and Jane Lane  
Dana Oster  
Simon and Carol Ottenberg  
Tracy & Ty Ouellette  
James Owens  
Sally Pagh  
Christine Paone  
Lorna and Dennis Parent  
Chinnaya Parimi  
Deryl Hart and Pascale Michel  
Donald Passarelli  
Barbara Pattee  
Jim and Linda Patterson  
Kevin Paul  
Molly and Bob Pavia  
Mark Pearson  
Sina Pearson  
Tim and Diana Pearson  
Daniel Peek  
Charles and Marnie Pennington  
Daniel Penttila  
Margy Pepper  
Sheila and Ronald Pera  
Shawn Crowley and Karen Petersen  
Dena Petersen and Ann Buzaitis  
Nicholle Petersen  
Walter and Cathy Pfahl  
William and Sally Pfeifer  
Cindy Pierce  
Wilbur and Lisa Pierce  
Larry and Claire Pinnow  
Janice Place  
Dennis and Lori Pollett  
Susan and Jerry Posten  
Maggie Potter  
Mary Brady and Don Power  
Nancy Preg  
Lynn Prewitt

John and Joyce Price  
Norma and David Priebe  
Pamela Pritzl  
Denny and Laurie Quirk  
Karen and Doug Radcliffe  
Amanda and Shawn Rainwater  
Bob and Judy Rainwater  
Richard Raisler  
William Easton and Tomasa Ramirez  
James Randles and Melinda Brown Randles  
Peggy Ratermann and Jim Asa  
Andrea Ratfield  
Ashley Rawhouser  
Robert Raymond and Dorothy Downes  
Steffany Raynes and Lin Skavdahl  
Rosann Wuebbels and George Reeves  
Lavone and Dick Reim  
Peter Remick  
Ted and Doris Rempel  
Allen and Lisa Rhoades  
Scott and Martha Rhodes  
Austin Rice  
Suzette Richards  
Harold and Irene Richardson  
Jack and Cynthia Richardson  
Susan Richardson  
Wendy Wall and Jon Richardson  
Rob Richey and Jeanne Brovold  
Nancy and David Ridgway  
Roger Ridgway  
Sarah Welch and Jon Riedel  
Douglas Risedorf  
Christy and Scott Rittenhouse  
Lenore Robb  
Howard Robbins  
Richard and Nancy Robblee  
Beth Owens and Greg Roberts  
Virginia Roberts  
Gary and Valerie Robinson  
Jan and Roger Robinson  
The Rodman Family  
Rick Roe  
Margaret Rojas and Drahomir Zboril  
Craig, Heather & Giovanni Romano  
Hal and Susan Rooks  
Harriet Rooks  
Bruce Rooney and Sandra Lane  
Kathleen H. Root  
Lisette Roozen-Mast and Michael Mast  
Marian Roper  
Paul Rosasco and Winni McNamara  
Bob Rose  
John and Patty Rose  
Karen and Jeffrey Ross  
Belinda Rotton  
Stan Russell  
Connie Saari  
Matt Lerner and Jo Saltmarsh  
Rick and Cynthia Sapp  
Herb and Christine Sargo  
Betsy Sautner  
Terre and Rick Scappini  
Paul Scharping  
Jim and Levy Scheltens  
Loren and Rebecca Schmidt  
Mike and Teresa Schmoe  
Randolph and Barbara Schnabel  
Scottie Schneider  
Cathy Schoenberg  
Laurel Schoenbohm  
Alfred Currier and Anne Schreivogl  
Robert and Emma Schroder  
Marlene and Mark Schuck  
Luther and Maryam Schutz  
Loren and Rebecca Schmidt  
David and Eddylee Scott  
Rosemary Seiffried  
Jerry Sells and Linda Larson  
Dan Senour  
Jennifer and Mike Sevigny  
Norman Sevigny  
Renee Shain  
Peter Shapiro  
Shasserre Family Fund  
Richard and Janice Shaughnessy  
Lisa Shawver  
Sally Sheck  
Elizabeth Sheppard and William D. Badgeley

Robert and Myrna Sherman  
Nancy Shimeall  
Dave Weitzel and Kayle Shulenberg  
Steven Siegfried  
Fred and Susan Sievers  
Sue and Richard Sigmen  
Roger Fuller and Mary Silva  
Barbara Silverman-Summers  
Gordon Sjogren  
Sue Skillman and Phil Fenner  
Ann Skinner and Randall King  
Robert Slack  
Judith Dudley and Tom Slocum  
Marlies and John Slostad  
Terence and Lois Slotemaker  
Deborah Smeltzer and David Kingsbury  
David and Kathleen Smith  
Diane Smith  
Fred Smith  
Gail Smith and Frances Chalmers  
J. Allen Smith  
Robert Smith  
Penny Snarenberg  
Pat Sneeringer  
Han So and Su'n Chon  
Kathryn Sobocinski  
Brad Solomon  
Mardi Solomon and Gene Myers  
Linda Speck and Ken Willis  
Paul Spehar  
Gregory and Carol Springs  
Nurith St Pierre  
Staff Of Skagit Wild Bird Supply  
Kimberley Stanard  
Dennis Stanchfield and Susan Radkins  
Mary Stanton  
Dick Staples  
Sharon Stapleton  
Charles Stavig and Candice Reid  
Irene and Shawn Steffens  
Carol Steffy  
Jack Stephens and Ellen O'Neill Stephens  
Jane and John Stephens  
Stu and Sally Stern  
Ralph Edfeldt and Bonnie Steussy  
Larry and Alba Stevens  
Skip Stevens  
Terry and Kathy Stevens  
Daniel and Louise Stewart  
Kate Stewart and Deborah DeWolfe  
Margaret and Bob Stickrod  
Maggie Miller and Larry Stiles  
Richard and Daphne Storwick  
Tom Strawman and Janet Nuetzmann  
Richard Studebaker and Eileen Andersen  
Margaret Studer  
Carol Sullivan  
Linda and Stephen Summers  
Patti Sutter and Jim Houston  
Lisa Swan  
Sandy Swartos and Don Measamer  
Steve and Lucy Swartz  
Andrew Swayne  
Kate Szurek  
Linda and Charles Talman  
Robert and Sherry Tamone  
Ann Tanner  
Sandra Tassel and Craig Lee  
Bill Taylor and Diana Lee  
Carol Taylor and Thomas Carson  
Dennis and Mary Ann Taylor  
Mary and Bob Taylor  
Tamie Taylor  
Bill and Ann Testerman  
Bill and Joan Tezak  
Owen Williams  
Ann Reid and Tom Theisen  
Cecil Thomas  
Suzanne Thomas  
Robert and Margaret Thompson  
Phyllis Thoreson  
Kathy Thornburgh  
Jan and Bob Tivel  
Shirley Tjersland  
David and Christine Towne  
Melita and Peter Townsend  
Renate Trapkowski  
Barbara Trask and Ger van den Engh

Richard and Carol Treston  
Jim Tsitsiragos  
Finis and Pamela Tupper  
Gerald Tuttle and Kathleen Gorham  
Steve and Valerie Ufer  
Carl Ullman  
Kathryn Utter  
Kathy Kilcoyne and Jon Vanderheyden  
Andrew and Marie Vanderhoof  
Chris Varela  
Karen and Jim Vedder  
Richard Brocksmit and Eleven Vexler  
Jane and Bruce Vilders  
Jane Vincent and Erik Hulsey  
George and Laura Jane Viverette  
Gregg and Erin von Femppe  
Denise Von Pressentin  
Jane Wagner and Bruce Bollert  
Elise and Duff Walker  
Jim and Betsy Walker  
Wendy Wall and Jon Richardson  
Jack and Liz Wallace  
Daniel Walters and Mary Petty  
Warren and Linda Walz  
Mike and Lisa Wandler  
Regina Wandler  
Leah Keefer and Owen Ward  
Dederick Ward and Susan Parke  
Ronald Watts  
Regan Weeks and Scott Petersen  
Saul and Shelley Weisberg  
Russ Weiser  
Ron and Jan Wesen  
Peter White  
Steve and Kathryn White  
Jerry and Carol Whitfield  
Kathy Whitman  
Don Wick  
Gary Wickman  
Harold Wiggers  
Keith and Jan Wiggers  
Wiggin, Cheryl and Terry  
Bill Wigner and Kim Streitz  
Clay Wilcox  
Liz Wilhelm  
Marla Wilk  
John and Diane Wilkinson  
Owen Williams  
Barbara Williams  
Christa and John Williams  
David Williams  
Terry and Marci Williams  
April and Brian Williamson  
Martha Wilson  
Susan Wilson and Eric Hall  
Susan and Charlie Wilson  
Ben and Sloane Winkes  
Gus Winkes  
Ken and Anne Winkes  
Mary Winkes  
Patricia and Thomas Winkler  
David and Joanne Witiak  
Susan and Gregory Woiorl  
Jay Smith and Susan Wood  
Chester Wood  
Judy Gamble and Todd Wood  
Annette Woolsey and Jim Shiftett  
Katherine Woyski  
Lisa Wright  
Philip and Carolynne Wright  
Rosann Wuebbels and George Reeves  
Andrea Xaver and Elizabeth Stewart  
Kathy and John Yaeger  
Brent and Rebekah Young  
David and Pat Young  
Danielle and Mark Young  
Paul Blum and Alison Zak  
Paul Zellers  
Carrie Zerjav and Nathan Moore  
Jim and Kay Zielinski  
Gloria Zillig  
Jane Zillig and Paul Ingalls  
Marisue Zillig  
Barbara Zimmerman  
Shelby Zimmerman  
Gerald and Mary Zyskowski  
Stan Zyskowski



## BOARD OF DIRECTORS

**Jim Glackin**, *President*  
Mount Vernon

**Mark Hitchcock**, *Vice President*  
Samish Island

**John Hunt**, *Treasurer*  
Anacortes

**Barbara Trask**, *Secretary*  
Birdsview

**Roger Fuller**  
Anacortes

**Carolyn Gastellum**  
Anacortes

**Steven H. Johnson**  
Anacortes

**Karen Krub**  
La Conner

**Rusty Kuntze**  
Bay View

**Harold Lee**  
Mount Vernon

**Mark Linnemann**  
Guemes Island

**Tim Manns**  
Mount Vernon

**Curtis A. Miller**  
Fir Island

**Therese Ogle**  
Samish Island

**Kathy Thornburgh**  
Mount Vernon

**Warren Walz**  
Anacortes

**Anne Winkes**  
Conway

**Keith Wiggers**  
Burlington

## STAFF

**Molly Doran**  
*Executive Director*

**Michael Kirshenbaum**  
*Conservation Director*

**Laura Hartner**  
*Development Director*

**Regina Wandler**  
*Stewardship Director*

**Martha Frankel**  
*Membership & Office Admin.*

**Kari Odden**  
*Conservation Project Manager*

**Jane Zillig**  
*Conservation Project Manager*

**Stacy Dahl**  
*Volunteer & Educ. Programs Coor.*

**Hannah Williams**  
*Conservation Areas Coordinator*

**Abby Weaver**  
*AmeriCorps Member*

**Debbie Ensey**  
*Auction Coordinator*

**Michele Onorato**  
*Accountant*

**Phil Buri, P.S.**  
*General Counsel*



RETURN SERVICE REQUESTED



PO Box 1017  
1020 S Third Street  
Mount Vernon, WA 98273  
www.skagitlandtrust.org  
360-428-7878

Non-Profit Org.  
U.S. Postage Paid  
Mount Vernon, WA  
Permit No. 195

Skagit Land Trust conserves wildlife habitat, agricultural and forest lands, scenic open space and shorelines for the benefit of our community and as a legacy for future generations.



Elk

Pacific Chorus Frog

Heron Family

## *Lands We Love Online Auction Celebration*

**Saturday, October 3, 2020 5:30PM - Sign Up Now!**

Grab your wildest friends and join us online from your natural habitat!

Featuring:

- A virtual champagne toast
- Special guest speakers
- A live auction with fabulous items, art, and adventures!
- Updates on the conservation work we're doing together

*Everyone is welcome, no ticket required. More information at [skagitlandtrust.org](http://skagitlandtrust.org).*



Black Bear



Bald Eagle



Beaver